



ELECTRONIC COPY

LABORATORY GROWN DIAMOND REPORT

September 1, 2022
 IGI Report Number **LG538270723**
 Description **LABORATORY GROWN
DIAMOND**
 Shape and Cutting Style **OVAL BRILLIANT**
 Measurements **10.25 X 7.51 X 4.75 MM**

GRADING RESULTS

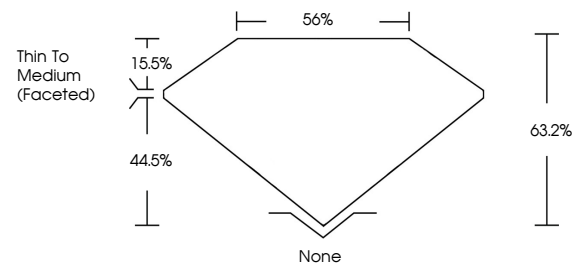
Carat Weight **2.22 CARATS**
 Color Grade **J**
 Clarity Grade **VS 2**

ADDITIONAL GRADING INFORMATION

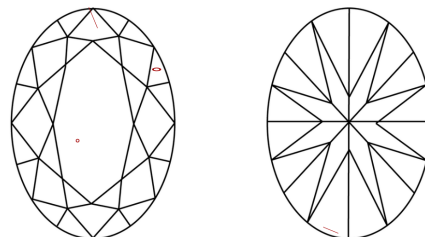
Polish **VERY GOOD**
 Symmetry **VERY GOOD**
 Fluorescence **NONE**
 Inscription(s) **LABGROWN IGI LG538270723**
 Comments: This Laboratory Grown Diamond was created by Chemical Vapor Deposition (CVD) growth process and may include post-growth treatment. Type IIa

LG538270723

PROPORTIONS



CLARITY CHARACTERISTICS

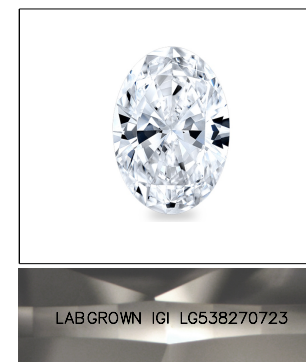


KEY TO SYMBOLS

Red symbols indicate internal characteristics.
 Green symbols indicate external characteristics.

GRADING SCALES

| | | | | | | |
|-----------------------------|------------------------------|-----------------------------|------------------------|-------------------|-----------|----------|
| COLOR GRADING SCALE | CL | NC | FT | VL | LT | |
| | COLORLESS D-F | NEAR COLORLESS G-J | FAINT K-M | VERY LIGHT N-R | LIGHT S-Z | |
| CLARITY (10x) GRADING SCALE | FL | IF | VVS | VS | SI | I |
| | FLAWLESS INTERNALLY FLAWLESS | VERY VERY SLIGHTLY INCLUDED | VERY SLIGHTLY INCLUDED | SLIGHTLY INCLUDED | INCLUDED | INCLUDED |

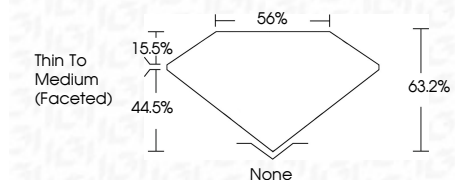


LABGROWN IGI LG538270723

LASERSCRIBESM

Sample Image Used

September 1, 2022
 IGI Report Number **LG538270723**
 Description **LABORATORY GROWN
DIAMOND**
 Shape and Cutting Style **OVAL BRILLIANT**
 Measurements **10.25 X 7.51 X 4.75 MM**
GRADING RESULTS
 Carat Weight **2.22 CARATS**
 Color Grade **J**
 Clarity Grade **VS 2**



ADDITIONAL GRADING INFORMATION

Polish **VERY GOOD**
 Symmetry **VERY GOOD**
 Fluorescence **NONE**
 Inscription(s) **LABGROWN IGI LG538270723**
 Comments: This Laboratory Grown Diamond was created by Chemical Vapor Deposition (CVD) growth process and may include post-growth treatment. Type IIa



IGI

September 1, 2022
 IGI Report No LG538270723
OVAL BRILLIANT
 Carat Weight **2.22 CARATS**
 Color Grade **J**
 Clarity Grade **VS 2**
 Depth **63.2%**
 Table **56%**
 Girdle **Thin To Medium (Faceted)**
 Culet **None**
 Polish **VERY GOOD**
 Symmetry **VERY GOOD**
 Fluorescence **NONE**
 Inscription(s) **LABGROWN IGI LG538270723**
 Comments:

This Laboratory Grown Diamond was created by Chemical Vapor Deposition (CVD) growth process and may include post-growth treatment. Type IIa

