



ELECTRONIC COPY

LABORATORY GROWN DIAMOND REPORT

September 1, 2022	
IGI Report Number	LG538270724
Description	LABORATORY GROWN DIAMOND
Shape and Cutting Style	OVAL BRILLIANT
Measurements	6.93 X 5.05 X 3.02 MM

GRADING RESULTS

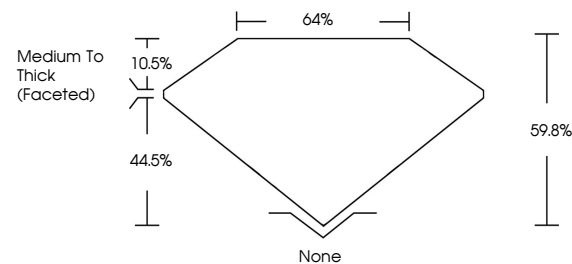
Carat Weight	0.66 CARAT
Color Grade	I
Clarity Grade	VVS 2

ADDITIONAL GRADING INFORMATION

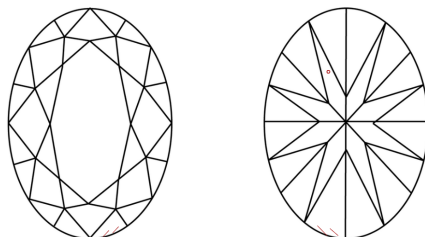
Polish	VERY GOOD
Symmetry	VERY GOOD
Fluorescence	NONE
Inscription(s)	LABGROWN IGI LG538270724
Comments: This Laboratory Grown Diamond was created by Chemical Vapor Deposition (CVD) growth process and may include post-growth treatment.	
Type IIa	

LG538270724

PROPORTIONS



CLARITY CHARACTERISTICS

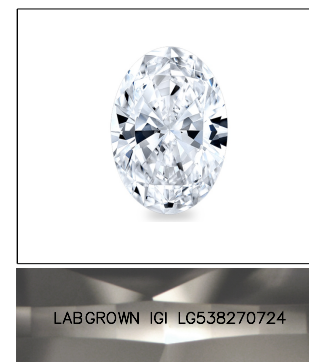


KEY TO SYMBOLS

Red symbols indicate internal characteristics.
Green symbols indicate external characteristics.

GRADING SCALES

COLOR GRADING SCALE	CL		NC	FT	VLT	LT
	COLORLESS D-F		NEAR COLORLESS G-J	FAINT K-M	VERY LIGHT N-R	LIGHT S-Z
CLARITY (10x) GRADING SCALE	FL	IF	VVS	VS	SI	I
	FLAWLESS INTERNALLY FLAWLESS		VERY VERY SLIGHTLY INCLUDED	VERY SLIGHTLY INCLUDED	SLIGHTLY INCLUDED	INCLUDED

LASERSCRIBESM

Sample Image Used



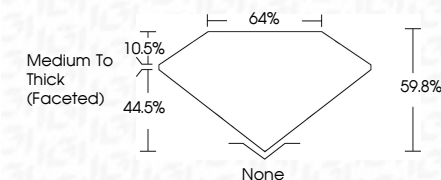
© IGI 2020, International Gemological Institute

FD - 10 20

www.igi.org

LABORATORY GROWN DIAMOND REPORT

September 1, 2022	
IGI Report Number	LG538270724
Description	LABORATORY GROWN DIAMOND
Shape and Cutting Style	OVAL BRILLIANT
Measurements	6.93 X 5.05 X 3.02 MM
GRADING RESULTS	
Carat Weight	0.66 CARAT
Color Grade	I
Clarity Grade	VVS 2



ADDITIONAL GRADING INFORMATION

Polish	VERY GOOD
Symmetry	VERY GOOD
Fluorescence	NONE
Inscription(s)	LABGROWN IGI LG538270724

Inscription(s) LABGROWN IGI LG538270724

Comments: This Laboratory Grown Diamond was created by Chemical Vapor Deposition (CVD) growth process and may include post-growth treatment.
Type IIa



September 1, 2022	0.66 CARAT
GI Report No. LG38827024	VS 2
GI VALUATION	59.9%
VS 3 X 5.6 X 3.02 MM	54%
Color Grade	Medium to thick (Fossilized)
Clarity Grade	None
Depth	VERY GOOD
Table	VERY GOOD
Girdle	NONE
Culet	Lapis Lazuli (9)
Polish	LG38827024
Symmetry	
Fluorescence	
Inscriptions(s)	
Comments:	

The Laboratory Growth Diamond was created by Chemical Vapor Deposition (CVD) growth process and may include post-growth treatment.

Type Ia

This Laboratory Grown Diamond was created by Chemical Vapor Deposition (CVD) growth process and may include post-growth treatment.