

INTERNATIONAL  
GEMOLOGICAL  
INSTITUTE

ELECTRONIC COPY

LABORATORY GROWN DIAMOND REPORT

September 1, 2022

IGI Report Number

LG538270727

Description

LABORATORY GROWN  
DIAMOND

Shape and Cutting Style

OVAL BRILLIANT

Measurements

6.90 X 4.68 X 2.81 MM

GRADING RESULTS

Carat Weight

0.56 CARAT

Color Grade

I

Clarity Grade

VS 1

ADDITIONAL GRADING INFORMATION

Polish

VERY GOOD

Symmetry

VERY GOOD

Fluorescence

NONE

Inscription(s)

LABGROWN IGI LG538270727

Comments: This Laboratory Grown Diamond was created by Chemical Vapor Deposition (CVD) growth process and may include post-growth treatment. Type IIa

LABORATORY GROWN DIAMOND REPORT

September 1, 2022

IGI Report Number

LG538270727

Description

LABORATORY GROWN  
DIAMOND

Shape and Cutting Style

OVAL BRILLIANT

Measurements

6.90 X 4.68 X 2.81 MM

GRADING RESULTS

Carat Weight

0.56 CARAT

Color Grade

I

Clarity Grade

VS 1

ADDITIONAL GRADING INFORMATION

Polish

VERY GOOD

Symmetry

VERY GOOD

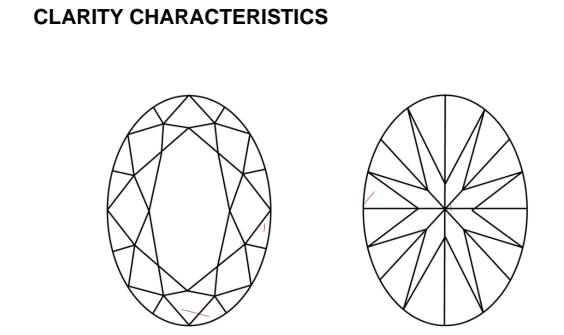
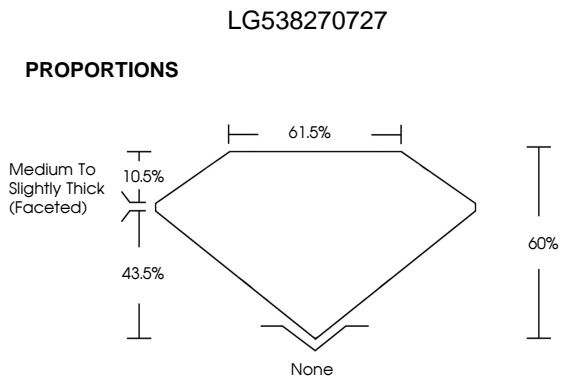
Fluorescence

NONE

Inscription(s)

LABGROWN IGI LG538270727

Comments: This Laboratory Grown Diamond was created by Chemical Vapor Deposition (CVD) growth process and may include post-growth treatment. Type IIa

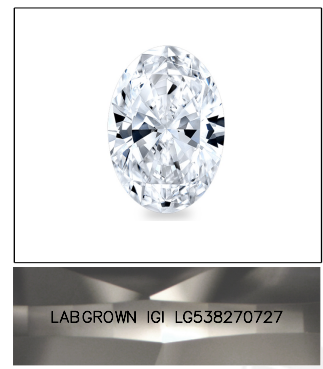


KEY TO SYMBOLS

Red symbols indicate internal characteristics.  
Green symbols indicate external characteristics.

GRADING SCALES

COLOR GRADING SCALE	CL		NC		FT		VLT		LT	
	COLORLESS D-F		NEAR COLORLESS G-J		FAINT K-M		VERY LIGHT N-R		LIGHT S-Z	
CLARITY (10x) GRADING SCALE	FL		VVS		VS		SI		I	
	FLAWLESS INTERNALLY FLAWLESS		VERY VERY SLIGHTLY INCLUDED		VERY SLIGHTLY INCLUDED		SLIGHTLY INCLUDED		INCLUDED	



LASERSCRIBE<sup>SM</sup>

Sample Image Used



September 1, 2022	IGI Report No LG538270727	OVAL BRILLIANT	6.90 X 4.68 X 2.81 MM	Carat Weight	0.56 CARAT	I	VS 1	60%	61.5%	Medium To Slightly Thick (Faceted)	None	VERY GOOD	VERY GOOD	NONE	LABGROWN IGI LG538270727	Comments: This Laboratory Grown Diamond was created by Chemical Vapor Deposition (CVD) growth process and may include post-growth treatment. Type IIa
-------------------	---------------------------	----------------	-----------------------	--------------	------------	---	------	-----	-------	------------------------------------	------	-----------	-----------	------	--------------------------	---