

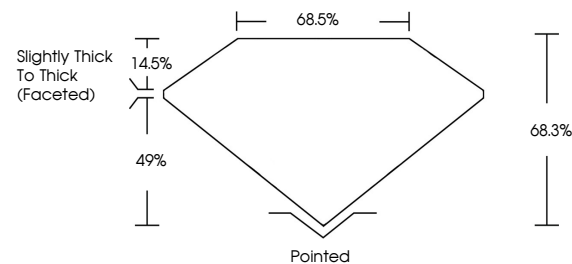


ELECTRONIC COPY

LABORATORY GROWN DIAMOND REPORT

LG538270731

PROPORTIONS



GRADING SCALES

COLOR GRADING SCALE	CL	NC	FT	VL	LT	
	COLORLESS D-F	NEAR COLORLESS G-J	FAINT K-M	VERY LIGHT N-R	LIGHT S-Z	
CLARITY (10x) GRADING SCALE	FL	IF	VVS	VS	SI	I
	FLAWLESS INTERNALLY FLAWLESS	VERY VERY SLIGHTLY INCLUDED	VERY SLIGHTLY INCLUDED	SLIGHTLY INCLUDED	INCLUDED	

September 15, 2022

IGI Report Number

LG538270731

Description

LABORATORY GROWN
DIAMOND

Shape and Cutting Style

CUSHION MODIFIED
BRILLIANT

Measurements

7.39 X 7.26 X 4.96 MM

GRADING RESULTS

Carat Weight

2.33 CARATS

Color Grade

K

Clarity Grade

VS 2

September 15, 2022

IGI Report Number

LG538270731

Description

LABORATORY GROWN
DIAMOND

Shape and Cutting Style

CUSHION MODIFIED BRILLIANT

Measurements

7.39 X 7.26 X 4.96 MM

GRADING RESULTS

Carat Weight

2.33 CARATS

Color Grade

K

Clarity Grade

VS 2

ADDITIONAL GRADING INFORMATION

Polish

VERY GOOD

Symmetry

VERY GOOD

Fluorescence

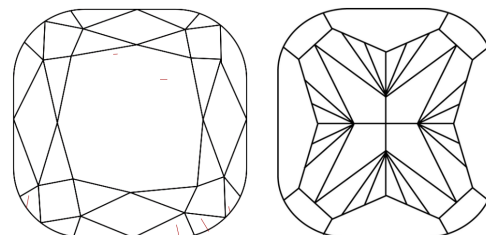
NONE

Inscription(s)

LABGROWN IGI LG538270731

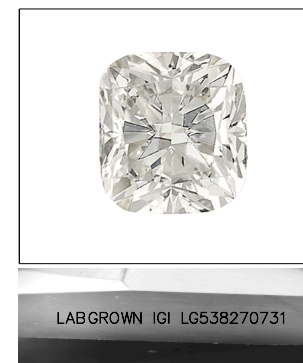
Comments: This Laboratory Grown Diamond was created by Chemical Vapor Deposition (CVD) growth process and may include post-growth treatment. Type IIa

CLARITY CHARACTERISTICS



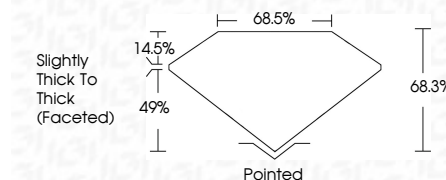
KEY TO SYMBOLS

Red symbols indicate internal characteristics.
Green symbols indicate external characteristics.



LASERSCRIBESM

Sample Image Used



ADDITIONAL GRADING INFORMATION

Polish

VERY GOOD

Symmetry

VERY GOOD

Fluorescence

NONE

Inscription(s)

LABGROWN IGI LG538270731

Comments: This Laboratory Grown Diamond was created by Chemical Vapor Deposition (CVD) growth process and may include post-growth treatment. Type IIa



IGI

September 15, 2022	IGI Report No LG538270731	CUSHION MODIFIED BRILLIANT	7.39 X 7.26 X 4.96 MM	2.33 CARATS	K	VS 2	68.5%	68.5%	Slightly Thick To Thick (Faceted)	Pointed	VERY GOOD	VERY GOOD	NONE	LABGROWN IGI LG538270731	Comments: This Laboratory Grown Diamond was created by Chemical Vapor Deposition (CVD) growth process and may include post-growth treatment. Type IIa
--------------------	---------------------------	----------------------------	-----------------------	-------------	---	------	-------	-------	-----------------------------------	---------	-----------	-----------	------	--------------------------	---