



ELECTRONIC COPY

LABORATORY GROWN DIAMOND REPORT

| | |
|-------------------------|--------------------------------------|
| September 15, 2022 | |
| IGI Report Number | LG538270737 |
| Description | LABORATORY GROWN DIAMOND |
| Shape and Cutting Style | SQUARE CUSHION MODIFIED BRILLIANT |
| Measurements | 4.96 X 4.73 X 3.45 MM |

GRADING RESULTS

| | |
|---------------|------------|
| Carat Weight | 0.67 CARAT |
| Color Grade | I |
| Clarity Grade | VVS 2 |

ADDITIONAL GRADING INFORMATION

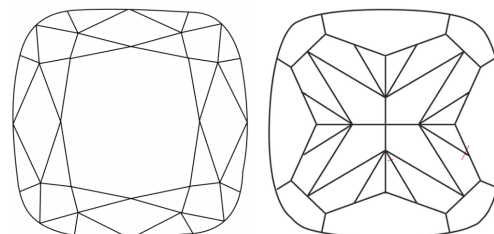
| | |
|--------------|-----------|
| Polish | VERY GOOD |
| Symmetry | GOOD |
| Fluorescence | NONE |

Inscription(s) **LABGROWN IGI LG538270737**
 Comments: This Laboratory Grown Diamond was created by Chemical Vapor Deposition (CVD) growth process and may include post-growth treatment. Type IIa

Diagram illustrating the proportions of a diamond-shaped cross-section (likely a lens or optical component) with the following dimensions and labels:

- Top Width:** 63.5%
- Left Side Thickness:** 14.5% (labeled "Slightly Thick To Thick (Faceted)") and 53%
- Right Side Thickness:** 72.9%
- Bottom Shape:** Pointed

CLARITY CHARACTERISTICS

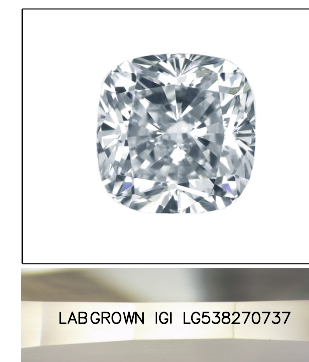


KEY TO SYMBOLS

Red symbols indicate internal characteristics.
Green symbols indicate external characteristics.

GRADING SCALES

| | | | | | | | | | | |
|-----------------------------|------------------------------|----|-----------------------------|--|------------------------|--|-------------------|--|-----------|--|
| COLOR GRADING SCALE | CL | | NC | | FT | | VLT | | LT | |
| | COLORLESS D-F | | NEAR COLORLESS G-J | | FAINT K-M | | VERY LIGHT N-R | | LIGHT S-Z | |
| CLARITY (10x) GRADING SCALE | FL | IF | VVS | | VS | | SI | | I | |
| | FLAWLESS INTERNALLY FLAWLESS | | VERY VERY SLIGHTLY INCLUDED | | VERY SLIGHTLY INCLUDED | | SLIGHTLY INCLUDED | | INCLUDED | |



LASERSCRIBESM
Sample Image Used

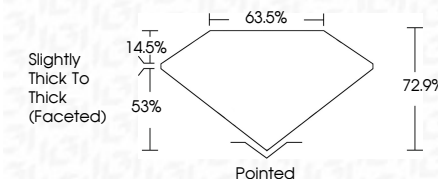


© IGI 2020, International Gemological Institute

FD - 10 20

LABORATORY GROWN DIAMOND REPORT

| | |
|-------------------------|--------------------------------------|
| September 15, 2022 | |
| IGI Report Number | LG538270737 |
| Description | LABORATORY GROWN DIAMOND |
| Shape and Cutting Style | SQUARE CUSHION MODIFIED BRILLIANT |
| Measurements | 4.96 X 4.73 X 3.45 MM |
| GRADING RESULTS | |
| Carat Weight | 0.67 CARAT |
| Color Grade | I |
| Clarity Grade | VVS 2 |



ADDITIONAL GRADING INFORMATION

| | |
|----------------|--------------------------|
| Polish | VERY GOOD |
| Symmetry | GOOD |
| Fluorescence | NONE |
| Inscription(s) | LABGROWN IGI LG538270737 |

Comments: This Laboratory Grown Diamond was created by Chemical Vapor Deposition (CVD) growth process and may include post-growth treatment.
Type IIa



| | | |
|--|-----------------------------------|--|
| September 15, 2022 | GI Report No. GS3827037 | |
| SQUARE CUSHION MODIFIED BRILLIANT | | |
| 1.96 X 1.73 X 3.45 MM | | |
| Color Weight | 0.67 CARAT | |
| Color Grade | I | |
| Clarity Grade | VVS 2 | |
| Depth | 72.5% | |
| Table | 63.5% | |
| Girdle | Slightly Thick To Thick (Faceted) | |
| Culet | Pointed | |
| Polish | VERY GOOD | |
| Symmetry | GOOD | |
| Fluorescence | NONE | |
| Inscriptions(s) | LABGROWN US GS3827037 | |
| Comments: | | |
| This Laboratory Grown Diamond was created by Chemical Vapor Deposition (CVD) growth process and may include post-growth treatment. | | |
| Type Ia | | |