

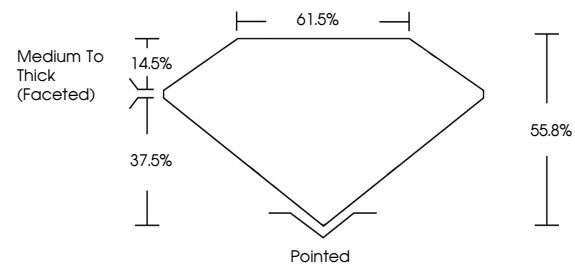


ELECTRONIC COPY

LABORATORY GROWN DIAMOND REPORT

LG538270963

PROPORTIONS



GRADING SCALES

COLOR GRADING SCALE	CL	NC	FT	VLT	LT	
	COLORLESS D-F	NEAR COLORLESS G-J	FAINT K-M	VERY LIGHT N-R	LIGHT S-Z	
CLARITY (10x) GRADING SCALE	FL	IF	VVS	VS	SI	I
	FLAWLESS INTERNALLY FLAWLESS	VERY VERY SLIGHTLY INCLUDED	VERY SLIGHTLY INCLUDED	SLIGHTLY INCLUDED	INCLUDED	

September 12, 2022

IGI Report Number

LG538270963

Description

LABORATORY GROWN DIAMOND

Shape and Cutting Style

HEART BRILLIANT

Measurements

5.93 X 7.06 X 3.94 MM

GRADING RESULTS

Carat Weight

0.98 CARAT

Color Grade

G

Clarity Grade

SI 1

September 12, 2022

IGI Report Number

LG538270963

Description

LABORATORY GROWN DIAMOND

Shape and Cutting Style

HEART BRILLIANT

Measurements

5.93 X 7.06 X 3.94 MM

GRADING RESULTS

Carat Weight

0.98 CARAT

Color Grade

G

Clarity Grade

SI 1

ADDITIONAL GRADING INFORMATION

Polish

VERY GOOD

Symmetry

VERY GOOD

Fluorescence

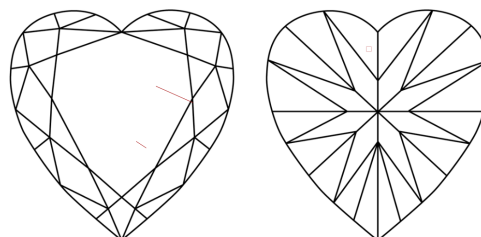
NONE

Inscription(s)

LABGROWN IGI LG538270963

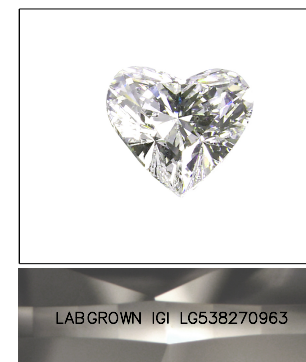
Comments: This Laboratory Grown Diamond was created by Chemical Vapor Deposition (CVD) growth process and may include post-growth treatment. Type IIa

CLARITY CHARACTERISTICS



KEY TO SYMBOLS

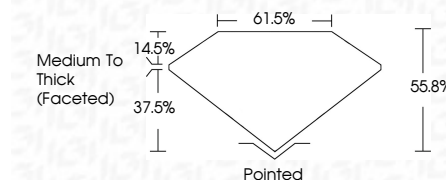
Red symbols indicate internal characteristics.
Green symbols indicate external characteristics.



LABGROWN IGI LG538270963

LASERSCRIBESM

Sample Image Used



ADDITIONAL GRADING INFORMATION

Polish

VERY GOOD

Symmetry

VERY GOOD

Fluorescence

NONE

Inscription(s)

LABGROWN IGI LG538270963

Comments: This Laboratory Grown Diamond was created by Chemical Vapor Deposition (CVD) growth process and may include post-growth treatment. Type IIa



IGI

September 12, 2022	IGI Report No LG538270963	0.98 CARAT	G	SI 1	Pointed
HEART BRILLIANT	5.93 X 7.06 X 3.94 MM	55.8%	61.5%	Medium To Thick (Faceted)	VERY GOOD
Carat Weight	Color Grade	Clarity Grade	Depth	Table	Symmetry
					VERY GOOD
					Fluorescence
					NONE
					Inscription(s)
					LABGROWN IGI LG538270963
					Comments:
					The Laboratory Grown Diamond was created by Chemical Vapor Deposition (CVD) growth process and may include post-growth treatment. Type IIa