



ELECTRONIC COPY

LABORATORY GROWN DIAMOND REPORT

July 16, 2022
IGI Report Number LG538274207
Description LABORATORY GROWN DIAMOND
Shape and Cutting Style OVAL BRILLIANT
Measurements 10.04 X 7.16 X 4.47 MM

GRADING RESULTS

Carat Weight 2.01 CARATS
Color Grade E
Clarity Grade SI 1

ADDITIONAL GRADING INFORMATION

Polish EXCELLENT
Symmetry EXCELLENT
Fluorescence NONE

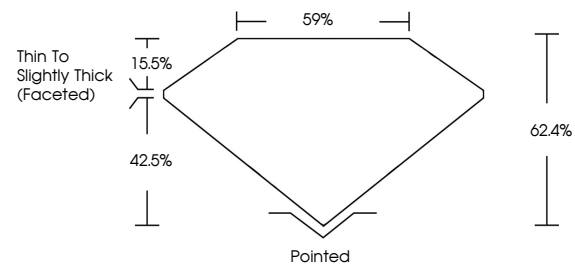
Inscription(s) LABGROWN IGI LG538274207

Comments: As Grown - No indication of post-growth treatment.

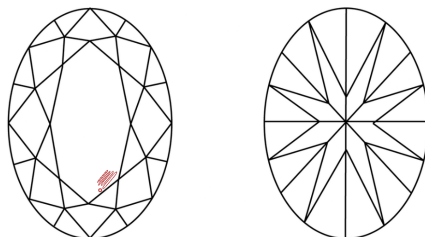
This Laboratory Grown Diamond was created by High Pressure High Temperature (HPHT) growth process. Type II

LG538274207

PROPORTIONS



CLARITY CHARACTERISTICS

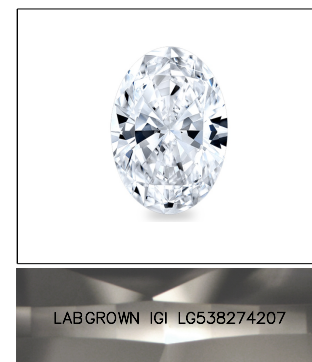


KEY TO SYMBOLS

Red symbols indicate internal characteristics.
Green symbols indicate external characteristics.

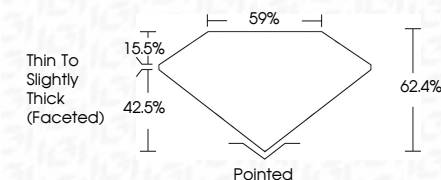
GRADING SCALES

Table with 2 columns: COLOR GRADING SCALE and CLARITY (10x) GRADING SCALE. Rows include color grades (CL, NC, FT, VLT, LT) and clarity grades (FL, IF, VVS, VS, SI, I).



LASERSCRIBE SM
Sample Image Used

July 16, 2022
IGI Report Number LG538274207
Description LABORATORY GROWN DIAMOND
Shape and Cutting Style OVAL BRILLIANT
Measurements 10.04 X 7.16 X 4.47 MM
GRADING RESULTS
Carat Weight 2.01 CARATS
Color Grade E
Clarity Grade SI 1



ADDITIONAL GRADING INFORMATION

Polish EXCELLENT
Symmetry EXCELLENT
Fluorescence NONE
Inscription(s) LABGROWN IGI LG538274207

Comments: As Grown - No indication of post-growth treatment.
This Laboratory Grown Diamond was created by High Pressure High Temperature (HPHT) growth process. Type II



Summary table of diamond characteristics: Carat Weight (2.01 CARATS), Color Grade (E), Clarity Grade (SI 1), Depth (62.4%), Table (59%), Girdle (Thin To Slightly Thick (Faceted)), Culet (Pointed), Polish (EXCELLENT), Symmetry (EXCELLENT), Fluorescence (NONE), Inscription(s) (LABGROWN IGI LG538274207), Comments (As Grown - No indication of post-growth treatment...).