



ELECTRONIC COPY

LABORATORY GROWN DIAMOND REPORT

July 16, 2022
 IGI Report Number **LG538276075**
 Description **LABORATORY GROWN
DIAMOND**
 Shape and Cutting Style **ROUND BRILLIANT**
 Measurements **8.89 - 8.92 X 5.60 MM**

GRADING RESULTS

Carat Weight **2.77 CARATS**
 Color Grade **G**
 Clarity Grade **VVS 2**
 Cut Grade **EXCELLENT**

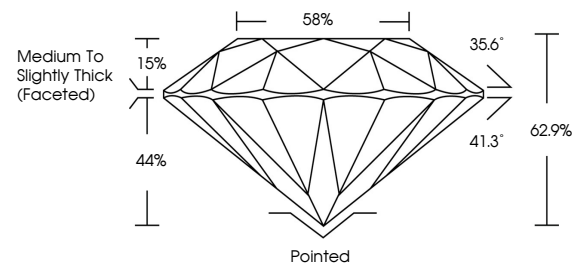
ADDITIONAL GRADING INFORMATION

Polish **EXCELLENT**
 Symmetry **EXCELLENT**
 Fluorescence **NONE**
 Inscription(s) **LABGROWN IGI LG538276075**

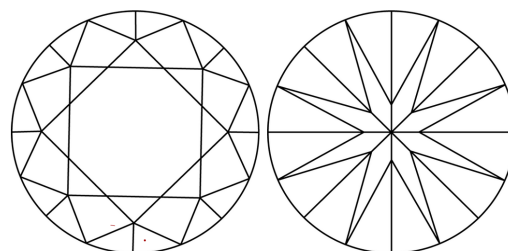
Comments: This Laboratory Grown Diamond was created by Chemical Vapor Deposition (CVD) growth process and may include post-growth treatment. Type IIa

LG538276075

PROPORTIONS



CLARITY CHARACTERISTICS



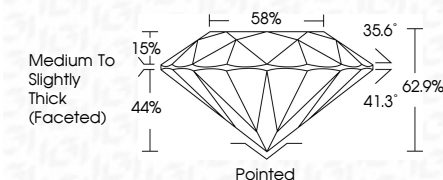
KEY TO SYMBOLS

Red symbols indicate internal characteristics.
 Green symbols indicate external characteristics.

GRADING SCALES

| COLOR GRADING SCALE | CL | NC | FT | VLT | LT | |
|-----------------------------|------------------------------|-----------------------------|------------------------|-------------------|-----------|---|
| | COLORLESS D-F | NEAR COLORLESS G-J | FAINT K-M | VERY LIGHT N-R | LIGHT S-Z | |
| CLARITY (10x) GRADING SCALE | FL | IF | VVS | VS | SI | I |
| | FLAWLESS INTERNALLY FLAWLESS | VERY VERY SLIGHTLY INCLUDED | VERY SLIGHTLY INCLUDED | SLIGHTLY INCLUDED | INCLUDED | |

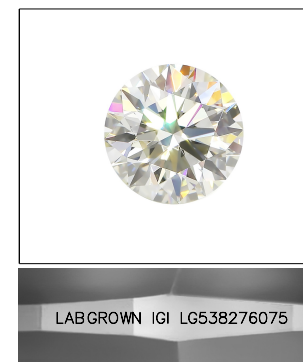
July 16, 2022
 IGI Report Number **LG538276075**
 Description **LABORATORY GROWN
DIAMOND**
 Shape and Cutting Style **ROUND BRILLIANT**
 Measurements **8.89 - 8.92 X 5.60 MM**
GRADING RESULTS
 Carat Weight **2.77 CARATS**
 Color Grade **G**
 Clarity Grade **VVS 2**
 Cut Grade **EXCELLENT**



ADDITIONAL GRADING INFORMATION

Polish **EXCELLENT**
 Symmetry **EXCELLENT**
 Fluorescence **NONE**
 Inscription(s) **LABGROWN IGI LG538276075**

Comments: This Laboratory Grown Diamond was created by Chemical Vapor Deposition (CVD) growth process and may include post-growth treatment. Type IIa



LASERSCRIBESM

Sample Image Used



July 16, 2022
 IGI Report No **LG538276075**
ROUND BRILLIANT
8.89 - 8.92 X 5.60 MM
 Carat Weight **2.77 CARATS**
 Color Grade **G**
 Clarity Grade **VVS 2**
 Cut Grade **EXCELLENT**
 Depth **62.9%**
 Table **58%**
 Girdle **Medium To Slightly Thick (Faceted)**
 Culet **Pointed**
 Polish **EXCELLENT**
 Symmetry **EXCELLENT**
 Fluorescence **NONE**
 Inscription(s) **LABGROWN IGI LG538276075**
 Comments: **This Laboratory Grown Diamond was created by Chemical Vapor Deposition (CVD) growth process and may include post-growth treatment. Type IIa**