



ELECTRONIC COPY

LABORATORY GROWN DIAMOND REPORT

| | |
|-------------------------|--|
| July 16, 2022 | |
| IGI Report Number | LG538285438 |
| Description | LABORATORY GROWN DIAMOND |
| Shape and Cutting Style | CUT CORNERED RECTANGULAR MODIFIED BRILLIANT |
| Measurements | 8.72 X 6.18 X 4.28 MM |

GRADING RESULTS

| | |
|---------------|-------------|
| Carat Weight | 2.12 CARATS |
| Color Grade | G |
| Clarity Grade | VS 1 |

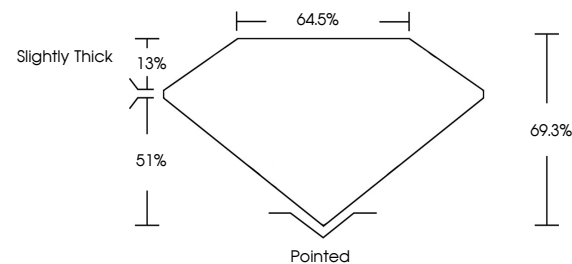
ADDITIONAL GRADING INFORMATION

| | |
|--------------|-----------|
| Polish | EXCELLENT |
| Symmetry | EXCELLENT |
| Fluorescence | NONE |

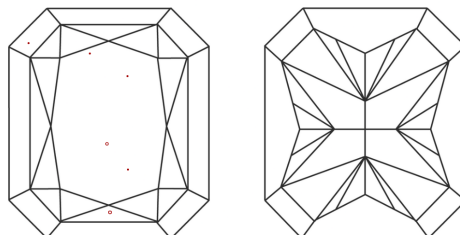
Inscription(s) **LABGROWN IGI LG538285438**
 Comments: This Laboratory Grown Diamond was created by Chemical Vapor Deposition (CVD) growth process and may include post-growth treatment. Type IIa

LG538285438

PROPORTIONS



CLARITY CHARACTERISTICS

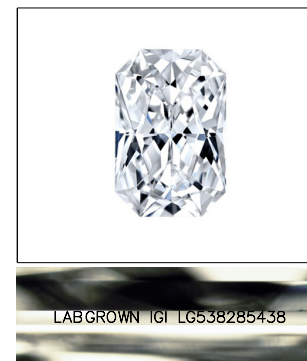


KEY TO SYMBOLS

Red symbols indicate internal characteristics.
Green symbols indicate external characteristics.

GRADING SCALES

| | | | | | | | | | | |
|-----------------------------|------------------------------|--|-----------------------------|--|------------------------|--|-------------------|--|-----------|--|
| COLOR GRADING SCALE | CL | | NC | | FT | | VLT | | LT | |
| | COLORLESS D-F | | NEAR COLORLESS G-J | | FAINT K-M | | VERY LIGHT N-R | | LIGHT S-Z | |
| CLARITY (10x) GRADING SCALE | FL IF | | VVS | | VS | | SI | | I | |
| | FLAWLESS INTERNALLY FLAWLESS | | VERY VERY SLIGHTLY INCLUDED | | VERY SLIGHTLY INCLUDED | | SLIGHTLY INCLUDED | | INCLUDED | |

LASERSCRIBESM

Sample Image Used



© IGI 2020, International Gemological Institute

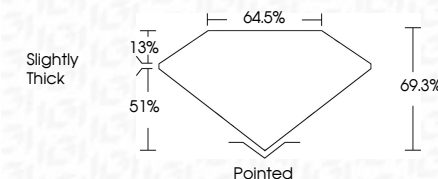
FD - 10 20

www.igi.org

LABORATORY GROWN DIAMOND REPORT

| | |
|-------------------------|---|
| July 16, 2022 | |
| IGI Report Number | LG538285438 |
| Description | LABORATORY GROWN DIAMOND |
| Shape and Cutting Style | CUT CORNERED RECTANGULAR MODIFIED BRILLIANT |
| Measurements | 8.72 X 6.18 X 4.28 MM |

| GRADING RESULTS | |
|-----------------|-------------|
| Carat Weight | 2.12 CARATS |
| Color Grade | G |
| Clarity Grade | VS 1 |



ADDITIONAL GRADING INFORMATION

| | |
|----------------|--------------------------|
| Polish | EXCELLENT |
| Symmetry | EXCELLENT |
| Fluorescence | NONE |
| Inscription(s) | LABGROWN IGI LG538285438 |

Comments: This Laboratory Grown Diamond was created by Chemical Vapor Deposition (CVD) growth process and may include post-growth treatment.
Type IIa



| | | | |
|--------------------------|-----------------------|----------------|--|
| July 16, 2022 | Report No. LG53925438 | 2.12 CARATS | Pointed |
| CU COVERED BEC. MODIFIED | | G | EXCELLENT |
| 17.2 X 13.9 X 4.28 MM | Carat Weight | Vs1 | EXCELLENT |
| | Color Grade | 66.5% | NONE |
| | Clarity Grade | 64.5% | LASER/GWMT (see LG53925438) |
| | Depth | Slightly Thick | Comments: |
| | Table | | This Laboratory Grown Diamond was |
| | Grade | | grown by the Chemical Vapor Deposition |
| | | | (CVD) growth process and may include |
| | | | post-growth treatment. |
| | | | Type IIA |