



ELECTRONIC COPY

LABORATORY GROWN DIAMOND REPORT

August 1, 2022
 IGI Report Number **LG538289839**
 Description **LABORATORY GROWN
DIAMOND**
 Shape and Cutting Style **SQUARE CUSHION BRILLIANT**
 Measurements **7.53 X 7.38 X 4.57 MM**

GRADING RESULTS

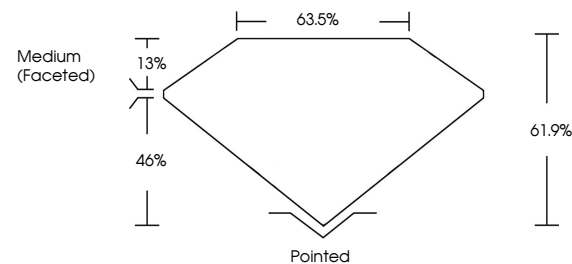
Carat Weight **1.73 CARAT**
 Color Grade **H**
 Clarity Grade **VVS 2**

ADDITIONAL GRADING INFORMATION

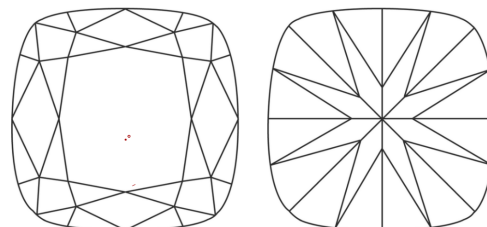
Polish **EXCELLENT**
 Symmetry **EXCELLENT**
 Fluorescence **NONE**
 Inscription(s) **LABGROWN IGI LG538289839**
 Comments: This Laboratory Grown Diamond was created by Chemical Vapor Deposition (CVD) growth process and may include post-growth treatment. Type IIa

LG538289839

PROPORTIONS



CLARITY CHARACTERISTICS



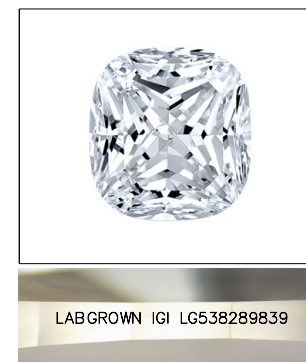
KEY TO SYMBOLS

Red symbols indicate internal characteristics.
 Green symbols indicate external characteristics.

August 1, 2022
 IGI Report Number **LG538289839**
 Description **LABORATORY GROWN
DIAMOND**
 Shape and Cutting Style **SQUARE CUSHION BRILLIANT**
 Measurements **7.53 X 7.38 X 4.57 MM**
GRADING RESULTS
 Carat Weight **1.73 CARAT**
 Color Grade **H**
 Clarity Grade **VVS 2**

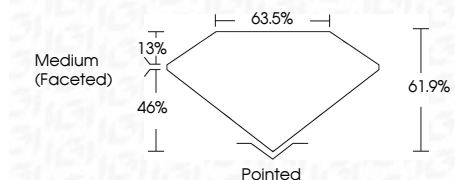
GRADING SCALES

COLOR GRADING SCALE	CL	NC	FT	VL	LT	
	COLORLESS D-F	NEAR COLORLESS G-J	FAINT K-M	VERY LIGHT N-R	LIGHT S-Z	
CLARITY (10x) GRADING SCALE	FL	IF	VVS	VS	SI	I
	FLAWLESS INTERNALLY FLAWLESS	VERY VERY SLIGHTLY INCLUDED	VERY SLIGHTLY INCLUDED	SLIGHTLY INCLUDED		INCLUDED



LASERSCRIBESM

Sample Image Used



ADDITIONAL GRADING INFORMATION

Polish **EXCELLENT**
 Symmetry **EXCELLENT**
 Fluorescence **NONE**
 Inscription(s) **LABGROWN IGI LG538289839**
 Comments: This Laboratory Grown Diamond was created by Chemical Vapor Deposition (CVD) growth process and may include post-growth treatment. Type IIa



IGI

August 1, 2022
 IGI Report No **LG538289839**
SQUARE CUSHION BRILLIANT
7.53 X 7.38 X 4.57 MM
 Carat Weight **1.73 CARAT**
 Color Grade **H**
 Clarity Grade **VVS 2**
 Depth **61.9%**
 Table **63.5%**
 Grade **Medium (Faceted)**
 Culet **Pointed**
 Polish **EXCELLENT**
 Symmetry **EXCELLENT**
 Fluorescence **NONE**
 Inscription(s) **LABGROWN IGI LG538289839**
 Comments:

This Laboratory Grown Diamond was created by Chemical Vapor Deposition (CVD) growth process and may include post-growth treatment. Type IIa