



ELECTRONIC COPY

LABORATORY GROWN DIAMOND REPORT

July 30, 2022
IGI Report Number LG538297390
Description LABORATORY GROWN DIAMOND
Shape and Cutting Style ROUND BRILLIANT
Measurements 6.69 - 6.73 X 4.15 MM

GRADING RESULTS

Carat Weight 1.15 CARAT
Color Grade E
Clarity Grade VVS 2
Cut Grade IDEAL

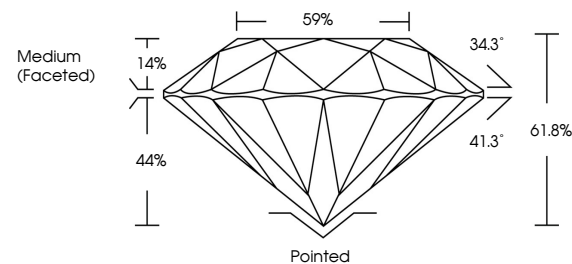
ADDITIONAL GRADING INFORMATION

Polish EXCELLENT
Symmetry EXCELLENT
Fluorescence NONE
Inscription(s) LABGROWN IGI LG538297390

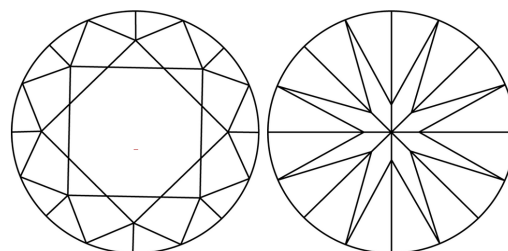
Comments: As Grown - No indication of post-growth treatment. This Laboratory Grown Diamond was created by High Pressure High Temperature (HPHT) growth process. Type II

LG538297390

PROPORTIONS



CLARITY CHARACTERISTICS



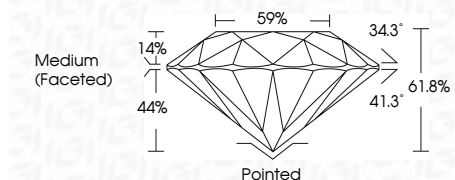
KEY TO SYMBOLS

Red symbols indicate internal characteristics. Green symbols indicate external characteristics.

July 30, 2022
IGI Report Number LG538297390
Description LABORATORY GROWN DIAMOND
Shape and Cutting Style ROUND BRILLIANT
Measurements 6.69 - 6.73 X 4.15 MM

GRADING RESULTS

Carat Weight 1.15 CARAT
Color Grade E
Clarity Grade VVS 2
Cut Grade IDEAL

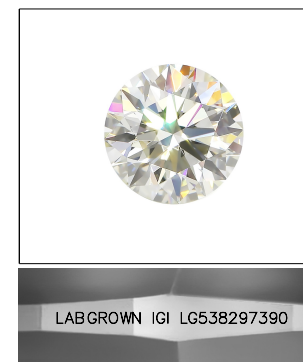


ADDITIONAL GRADING INFORMATION

Polish EXCELLENT
Symmetry EXCELLENT
Fluorescence NONE
Inscription(s) LABGROWN IGI LG538297390
Comments: As Grown - No indication of post-growth treatment. This Laboratory Grown Diamond was created by High Pressure High Temperature (HPHT) growth process. Type II

GRADING SCALES

Table with 5 columns for Color Grading Scale (CL, NC, FT, VLT, LT) and Clarity (10x) Grading Scale (FL, IF, VVS, VS, SI, I) with corresponding descriptions.



LASERSCRIBE SM Sample Image Used



Summary table of report details including IGI Report No, Round Brilliant, Carat Weight, Color Grade, Clarity Grade, Depth, Table, Girdle, Culet, Polish, Symmetry, Fluorescence, Inscription(s), and Comments.