



**INTERNATIONAL
GEMOLOGICAL
INSTITUTE**

LABORATORY GROWN DIAMOND REPORT

IGI LABORATORY GROWN DIAMOND IDENTIFICATION REPORT

July 21, 2022
IGI Report Number LG538297733
Description LABORATORY GROWN DIAMOND
Shape and Cutting Style ROUND BRILLIANT
Measurements 6.18 - 6.22 X 3.85 MM

GRADING RESULTS

Carat Weight 0.91 CARAT
Color Grade F
Clarity Grade VS 2
Cut Grade IDEAL

ADDITIONAL GRADING INFORMATION

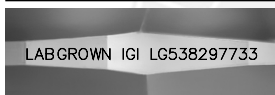
Polish EXCELLENT
Symmetry EXCELLENT
Fluorescence NONE
Inscription(s) LABGROWN IGI LG538297733

Comments: This Laboratory Grown Diamond was created by Chemical Vapor Deposition (CVD) growth process and may include post-growth treatment.
Type IIa

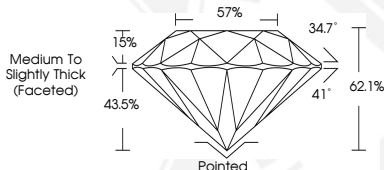
ELECTRONIC COPY

**LABORATORY GROWN
DIAMOND REPORT**

LG538297733



LASERSCRIBESM
Sample Images Used



**IGI LABORATORY GROWN
DIAMOND ID REPORT**

July 21, 2022
IGI Report Number **LG538297733**
ROUND BRILLIANT
6.18 - 6.22 X 3.85 MM
Carat Weight 0.91 CARAT
Color Grade F
Clarity Grade VS 2
Cut Grade IDEAL
Polish EXCELLENT
Symmetry EXCELLENT
Fluorescence NONE
Inscription(s) LABGROWN IGI
LG538297733

Comments: This Laboratory Grown Diamond was created by Chemical Vapor Deposition (CVD) growth process and may include post-growth treatment.
Type IIa

**IGI LABORATORY GROWN
DIAMOND ID REPORT**

July 21, 2022
IGI Report Number **LG538297733**
ROUND BRILLIANT
6.18 - 6.22 X 3.85 MM
Carat Weight 0.91 CARAT
Color Grade F
Clarity Grade VS 2
Cut Grade IDEAL
Polish EXCELLENT
Symmetry EXCELLENT
Fluorescence NONE
Inscription(s) LABGROWN IGI
LG538297733

Comments: This Laboratory Grown Diamond was created by Chemical Vapor Deposition (CVD) growth process and may include post-growth treatment.
Type IIa

THIS DOCUMENT WAS PRODUCED WITH THE FOLLOWING SECURITY MEASURES: SPECIAL DOCUMENT PAPER, INK SCREENS, WATERMARK, BACKGROUND DESIGN, HOLOGRAM AND OTHER SECURITY FEATURES NOT LISTED AND DO EXCEED DOCUMENT SECURITY INDUSTRY GUIDELINES.

For terms & conditions and to verify this report, please visit www.igi.org