



ELECTRONIC COPY

LABORATORY GROWN DIAMOND REPORT

August 1, 2022
IGI Report Number LG538298328
Description LABORATORY GROWN DIAMOND
Shape and Cutting Style ROUND BRILLIANT
Measurements 6.62 - 6.67 X 4.15 MM

GRADING RESULTS

Carat Weight 1.13 CARAT
Color Grade D
Clarity Grade VVS 2
Cut Grade IDEAL

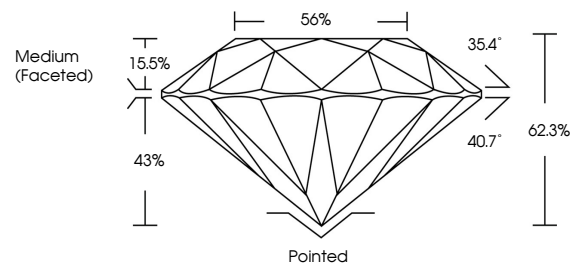
ADDITIONAL GRADING INFORMATION

Polish EXCELLENT
Symmetry EXCELLENT
Fluorescence NONE
Inscription(s) LABGROWN IGI LG538298328

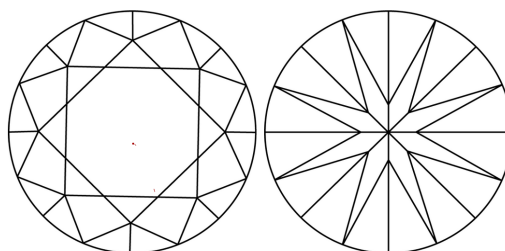
Comments: As Grown - No indication of post-growth treatment. This Laboratory Grown Diamond was created by High Pressure High Temperature (HPHT) growth process. Type II

LG538298328

PROPORTIONS



CLARITY CHARACTERISTICS



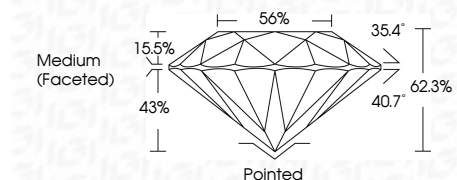
KEY TO SYMBOLS

Red symbols indicate internal characteristics. Green symbols indicate external characteristics.

August 1, 2022
IGI Report Number LG538298328
Description LABORATORY GROWN DIAMOND
Shape and Cutting Style ROUND BRILLIANT
Measurements 6.62 - 6.67 X 4.15 MM

GRADING RESULTS

Carat Weight 1.13 CARAT
Color Grade D
Clarity Grade VVS 2
Cut Grade IDEAL

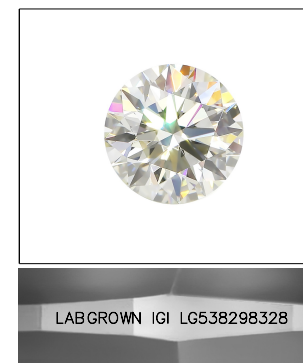


ADDITIONAL GRADING INFORMATION

Polish EXCELLENT
Symmetry EXCELLENT
Fluorescence NONE
Inscription(s) LABGROWN IGI LG538298328
Comments: As Grown - No indication of post-growth treatment. This Laboratory Grown Diamond was created by High Pressure High Temperature (HPHT) growth process. Type II

GRADING SCALES

Table with 2 columns: COLOR GRADING SCALE and CLARITY (10x) GRADING SCALE. Rows include categories like CL, NC, FT, VLT, LT and FL, IF, VVS, VS, SI, I.



LASERSCRIBE SM Sample Image Used



August 1, 2022
IGI Report No LG538298328
ROUND BRILLIANT
6.62 - 6.67 X 4.15 MM
Carat Weight 1.13 CARAT
Color Grade D
Clarity Grade VVS 2
Cut Grade IDEAL
Depth 62.3%
Table 56%
Girdle Medium (Faceted)
Culet Pointed
Polish EXCELLENT
Symmetry EXCELLENT
Fluorescence NONE
Inscription(s) LABGROWN IGI LG538298328
Comments: As Grown - No indication of post-growth treatment. This Laboratory Grown Diamond was created by High Pressure High Temperature (HPHT) growth process. Type II