



**INTERNATIONAL  
GEMOLOGICAL  
INSTITUTE**

**ELECTRONIC COPY**

**LABORATORY GROWN  
DIAMOND REPORT**

**IGI LABORATORY GROWN  
DIAMOND ID REPORT**

August 2, 2022  
IGI Report Number **LG538299309**  
**PEAR BRILLIANT**  
**6.02 X 3.76 X 2.42 MM**  
Carat Weight 0.32 CARAT  
Color Grade G  
Clarity Grade VS 1  
Polish VERY GOOD  
Symmetry GOOD  
Fluorescence NONE  
Inscription(s) LABGROWN IGI  
LG538299309

**LABORATORY GROWN DIAMOND REPORT**

**IGI LABORATORY GROWN DIAMOND IDENTIFICATION REPORT**

August 2, 2022  
IGI Report Number LG538299309  
Description LABORATORY GROWN DIAMOND  
Shape and Cutting Style PEAR BRILLIANT  
Measurements 6.02 X 3.76 X 2.42 MM

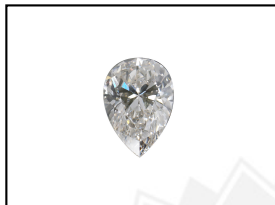
**GRADING RESULTS**

Carat Weight 0.32 CARAT  
Color Grade G  
Clarity Grade VS 1

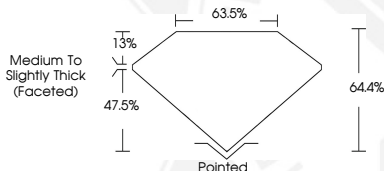
**ADDITIONAL GRADING INFORMATION**

Polish VERY GOOD  
Symmetry GOOD  
Fluorescence NONE  
Inscription(s) LABGROWN IGI LG538299309

Comments: This Laboratory Grown Diamond was created by Chemical Vapor Deposition (CVD) growth process and may include post-growth treatment.  
Type IIa



**LASERSCRIBE<sup>SM</sup>**  
Sample Images Used



Comments: This Laboratory Grown Diamond was created by Chemical Vapor Deposition (CVD) growth process and may include post-growth treatment.  
Type IIa

**IGI LABORATORY GROWN  
DIAMOND ID REPORT**

August 2, 2022  
IGI Report Number **LG538299309**  
**PEAR BRILLIANT**  
**6.02 X 3.76 X 2.42 MM**  
Carat Weight 0.32 CARAT  
Color Grade G  
Clarity Grade VS 1  
Polish VERY GOOD  
Symmetry GOOD  
Fluorescence NONE  
Inscription(s) LABGROWN IGI  
LG538299309

Comments: This Laboratory Grown Diamond was created by Chemical Vapor Deposition (CVD) growth process and may include post-growth treatment.  
Type IIa

THIS DOCUMENT WAS PRODUCED WITH THE FOLLOWING SECURITY MEASURES: SPECIAL DOCUMENT PAPER, INK SCREENS, WATERMARK, BACKGROUND DESIGN, HOLOGRAM AND OTHER SECURITY FEATURES NOT LISTED AND DO EXCEED DOCUMENT SECURITY INDUSTRY GUIDELINES.

For terms & conditions and to verify this report, please visit [www.igi.org](http://www.igi.org)