



**ELECTRONIC COPY**

**LABORATORY GROWN DIAMOND REPORT**

July 27, 2022  
IGI Report Number **LG539204027**  
Description **LABORATORY GROWN  
DIAMOND**  
Shape and Cutting Style **CUSHION BRILLIANT**  
Measurements **7.88 X 6.92 X 4.45 MM**

**GRADING RESULTS**

Carat Weight **2.08 CARATS**  
Color Grade **G**  
Clarity Grade **VVS 2**

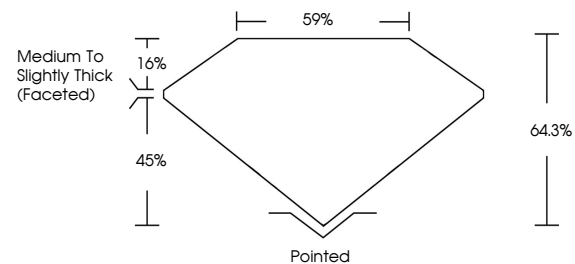
**ADDITIONAL GRADING INFORMATION**

Polish **EXCELLENT**  
Symmetry **EXCELLENT**  
Fluorescence **NONE**

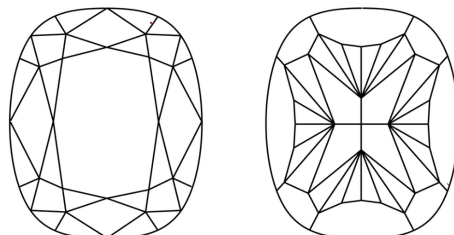
Inscription(s) **LABGROWN IGI LG539204027**  
Comments: As Grown - No indication of post-growth treatment.  
This Laboratory Grown Diamond was created by High Pressure High Temperature (HPHT) growth process.  
Type II  
Faint Blue

**LG539204027**

**PROPORTIONS**



**CLARITY CHARACTERISTICS**

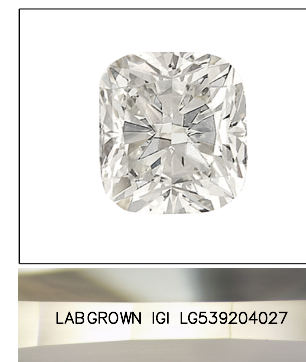


**KEY TO SYMBOLS**

Red symbols indicate internal characteristics.  
Green symbols indicate external characteristics.

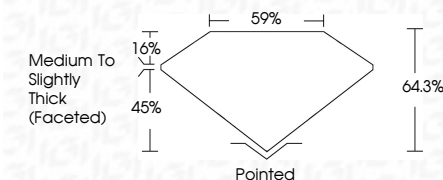
**GRADING SCALES**

COLOR GRADING SCALE	CL	NC	FT	VLT	LT	
	COLORLESS D-F	NEAR COLORLESS G-J	FAINT K-M	VERY LIGHT N-R	LIGHT S-Z	
CLARITY (10x) GRADING SCALE	FL	IF	VVS	VS	SI	I
	FLAWLESS INTERNALLY FLAWLESS	VERY VERY SLIGHTLY INCLUDED	VERY SLIGHTLY INCLUDED	SLIGHTLY INCLUDED	INCLUDED	INCLUDED



**LASERSCRIBE<sup>SM</sup>**  
Sample Image Used

July 27, 2022  
IGI Report Number **LG539204027**  
Description **LABORATORY GROWN  
DIAMOND**  
Shape and Cutting Style **CUSHION BRILLIANT**  
Measurements **7.88 X 6.92 X 4.45 MM**  
**GRADING RESULTS**  
Carat Weight **2.08 CARATS**  
Color Grade **G**  
Clarity Grade **VVS 2**



**ADDITIONAL GRADING INFORMATION**

Polish **EXCELLENT**  
Symmetry **EXCELLENT**  
Fluorescence **NONE**  
Inscription(s) **LABGROWN IGI LG539204027**  
Comments: As Grown - No indication of post-growth treatment.  
This Laboratory Grown Diamond was created by High Pressure High Temperature (HPHT) growth process.  
Type II  
Faint Blue



July 27, 2022  
IGI Report No **LG539204027**  
**CUSHION BRILLIANT**  
Carat Weight **2.08 CARATS**  
Color Grade **G**  
Clarity Grade **VVS 2**  
Depth **64.3%**  
Table **59%**  
Girdle **Medium To Slightly Thick (Faceted)**  
Culet **Pointed**  
Polish **EXCELLENT**  
Symmetry **EXCELLENT**  
Fluorescence **NONE**  
Inscription(s) **LABGROWN IGI LG539204027**  
Comments: **As Grown - No indication of post-growth treatment. This Laboratory Grown Diamond was created by High Pressure High Temperature (HPHT) growth process. Type II Faint Blue**

