



ELECTRONIC COPY

LABORATORY GROWN DIAMOND REPORT

July 25, 2022

IGI Report Number **LG539216051**

Description	LABORATORY GROWN DIAMOND
-------------	-----------------------------

Shape and Cutting Style **OVAL BRILLIANT**

Measurements 9.28 X 6.56 X 4.19 MM

GRADING RESULTS

Carat Weight 1.61 CARAT

Color Grade H

Clarity Grade VS 2

ADDITIONAL GRADING INFORMATION

Polish EXCELLENT

Symmetry **EXCELLENT**

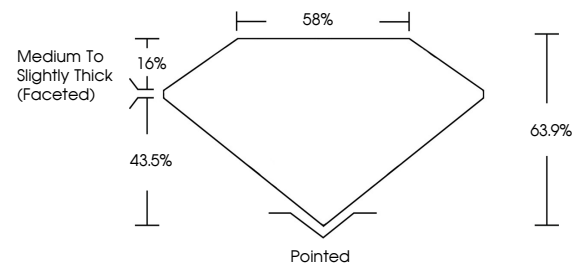
Fluorescence **NONE**

Inscription(s) LABGROWN IGI LG539216051

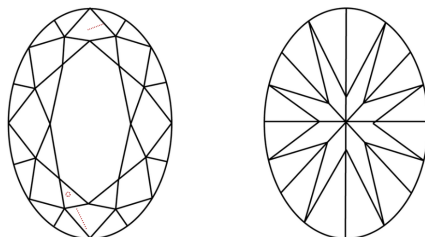
Comments: This Laboratory Grown Diamond was created by Chemical Vapor Deposition (CVD) growth process and may include post-growth treatment.
Type IIa

LG539216051

PROPORTIONS



CLARITY CHARACTERISTICS

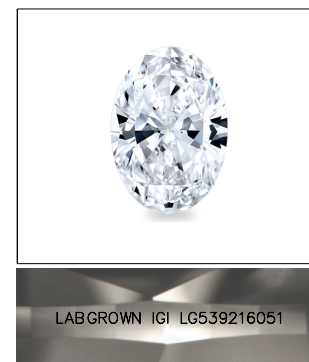


KEY TO SYMBOLS

Red symbols indicate internal characteristics.
Green symbols indicate external characteristics.

GRADING SCALES

COLOR GRADING SCALE	CL		NC		FT		VLT		LT	
	COLORLESS D-F		NEAR COLORLESS G-J		FAINT K-M		VERY LIGHT N-R		LIGHT S-Z	
CLARITY (10x) GRADING SCALE	FL IF		VVS		VS		SI		I	
	FLAWLESS INTERNALLY FLAWLESS		VERY VERY SLIGHTLY INCLUDED		VERY SLIGHTLY INCLUDED		SLIGHTLY INCLUDED		INCLUDED	

LASERSCRIBESM

Sample Image Used



© IGI 2020, International Gemological Institute

FD - 10 20

LABORATORY GROWN DIAMOND REPORT

July 25, 2022	
IGI Report Number	LG539216051
Description	LABORATORY GROWN

Shape and Cutting Style **OVAL BRILLIANT**

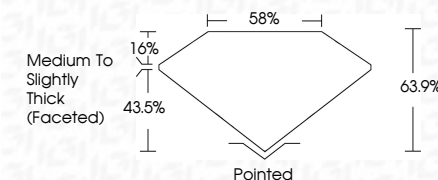
Measurements 9.28 X 6.56 X 4.19 MM

GRADING RESULTS

Carat Weight 1.61 CARAT

Color Grade H

Clarity Grade VS 2



ADDITIONAL GRADING INFORMATION

Polish **EXCELLENT**Symmetry **EXCELLENT**Fluorescence **NONE**

Inscription(s) LABGROWN IGI LG539216051

Comments: This Laboratory Grown Diamond was created by Chemical Vapor Deposition (CVD) growth process and may include post-growth treatment.
Type IIa



July 26, 2022	G/ Report No. LG59210051
CIAL BRILLIANT	
28 X 28 X 6.56 X 4.19 MM	
Carat Weight	1.61 CARAT
Color Grade	H
Clarity Grade	VS 2
Depth	63.9%
Table	58%
Grade	Medium To Slightly Thick (Faceted)
Culet	Poished
Polish	EXCELLENT
Symmetry	EXCELLENT
Fluorescence	NONE
Inscription(s)	LABORGROWN IG LG59210051
Comments:	This Laboratory Grown Diamond was created by CIAL Corporation. This diamond has been grown using Chemical Vapor Deposition (CVD) growth process and may include post-growth treatment. Type IIa