



ELECTRONIC COPY

LABORATORY GROWN DIAMOND REPORT

July 28, 2022
 IGI Report Number **LG539219031**
 Description **LABORATORY GROWN
DIAMOND**
 Shape and Cutting Style **ROUND BRILLIANT**
 Measurements **8.38 - 8.41 X 5.18 MM**

GRADING RESULTS

Carat Weight **2.27 CARATS**
 Color Grade **F**
 Clarity Grade **SI 1**
 Cut Grade **IDEAL**

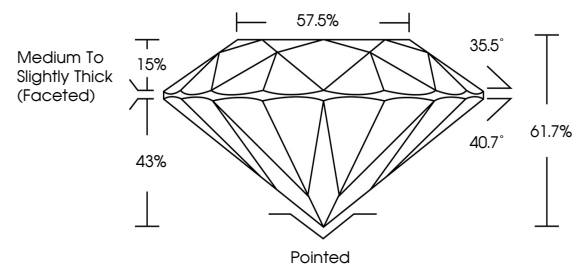
ADDITIONAL GRADING INFORMATION

Polish **EXCELLENT**
 Symmetry **EXCELLENT**
 Fluorescence **NONE**
 Inscription(s) **LABGROWN IGI LG539219031**

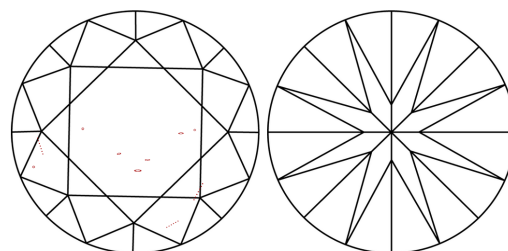
Comments: This Laboratory Grown Diamond was created by Chemical Vapor Deposition (CVD) growth process and may include post-growth treatment. Type IIa

LG539219031

PROPORTIONS



CLARITY CHARACTERISTICS



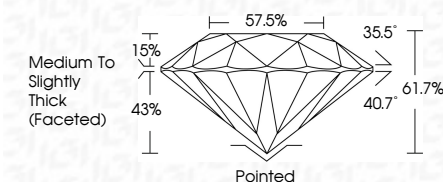
KEY TO SYMBOLS

Red symbols indicate internal characteristics.
 Green symbols indicate external characteristics.

GRADING SCALES

COLOR GRADING SCALE	CL	NC	FT	VL	LT	
	COLORLESS D-F	NEAR COLORLESS G-J	FAINT K-M	VERY LIGHT N-R	LIGHT S-Z	
CLARITY (10x) GRADING SCALE	FL	IF	VVS	VS	SI	I
	FLAWLESS INTERNALLY FLAWLESS	VERY VERY SLIGHTLY INCLUDED	VERY SLIGHTLY INCLUDED	SLIGHTLY INCLUDED	INCLUDED	

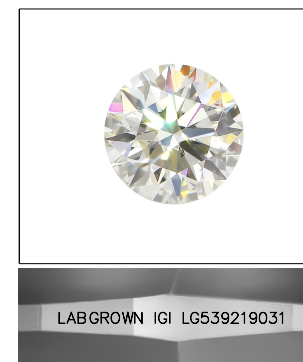
July 28, 2022
 IGI Report Number **LG539219031**
 Description **LABORATORY GROWN
DIAMOND**
 Shape and Cutting Style **ROUND BRILLIANT**
 Measurements **8.38 - 8.41 X 5.18 MM**
GRADING RESULTS
 Carat Weight **2.27 CARATS**
 Color Grade **F**
 Clarity Grade **SI 1**
 Cut Grade **IDEAL**



ADDITIONAL GRADING INFORMATION

Polish **EXCELLENT**
 Symmetry **EXCELLENT**
 Fluorescence **NONE**
 Inscription(s) **LABGROWN IGI LG539219031**

Comments: This Laboratory Grown Diamond was created by Chemical Vapor Deposition (CVD) growth process and may include post-growth treatment. Type IIa



LASERSCRIBESM
 Sample Image Used



July 28, 2022	IGI Report No LG539219031	2.27 CARATS	F
ROUND BRILLIANT	8.38 - 8.41 X 5.18 MM	IDEAL	SI 1
Carat Weight	Color Grade	Depth	Cut Grade
2.27 CARATS	F	61.7%	IDEAL
Medium To Slightly Thick (Faceted)	Pointed	57.5%	EXCELLENT
	EXCELLENT		EXCELLENT
	NONE		NONE
	LABGROWN IGI LG539219031		

Comments: This Laboratory Grown Diamond was created by Chemical Vapor Deposition (CVD) growth process and may include post-growth treatment. Type IIa