



ELECTRONIC COPY

LABORATORY GROWN DIAMOND REPORT

August 16, 2022
 IGI Report Number **LG539225326**
 Description **LABORATORY GROWN
DIAMOND**
 Shape and Cutting Style **SQUARE CUSHION BRILLIANT**
 Measurements **7.93 X 7.72 X 4.73 MM**

GRADING RESULTS

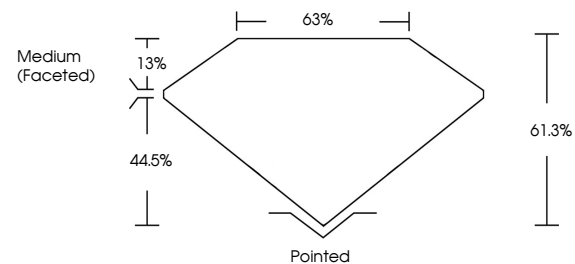
Carat Weight **2.00 CARATS**
 Color Grade **H**
 Clarity Grade **VS 1**

ADDITIONAL GRADING INFORMATION

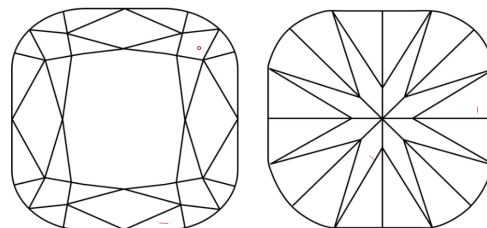
Polish **VERY GOOD**
 Symmetry **EXCELLENT**
 Fluorescence **NONE**
 Inscription(s) **LABGROWN IGI LG539225326**
 Comments: This Laboratory Grown Diamond was created by Chemical Vapor Deposition (CVD) growth process and may include post-growth treatment. Type IIa

LG539225326

PROPORTIONS



CLARITY CHARACTERISTICS



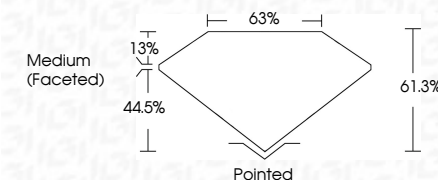
KEY TO SYMBOLS

Red symbols indicate internal characteristics.
 Green symbols indicate external characteristics.

GRADING SCALES

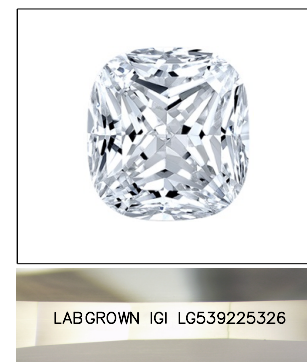
COLOR GRADING SCALE	CL	NC	FT	VL	LT	
	COLORLESS D-F	NEAR COLORLESS G-J	FAINT K-M	VERY LIGHT N-R	LIGHT S-Z	
CLARITY (10x) GRADING SCALE	FL	IF	VVS	VS	SI	I
	FLAWLESS INTERNALLY FLAWLESS	VERY VERY SLIGHTLY INCLUDED	VERY SLIGHTLY INCLUDED	SLIGHTLY INCLUDED	INCLUDED	INCLUDED

August 16, 2022
 IGI Report Number **LG539225326**
 Description **LABORATORY GROWN
DIAMOND**
 Shape and Cutting Style **SQUARE CUSHION BRILLIANT**
 Measurements **7.93 X 7.72 X 4.73 MM**
GRADING RESULTS
 Carat Weight **2.00 CARATS**
 Color Grade **H**
 Clarity Grade **VS 1**



ADDITIONAL GRADING INFORMATION

Polish **VERY GOOD**
 Symmetry **EXCELLENT**
 Fluorescence **NONE**
 Inscription(s) **LABGROWN IGI LG539225326**
 Comments: This Laboratory Grown Diamond was created by Chemical Vapor Deposition (CVD) growth process and may include post-growth treatment. Type IIa



LABGROWN IGI LG539225326

LASERSCRIBESM

Sample Image Used



IGI



August 16, 2022	IGI Report No LG539225326	SQUARE CUSHION BRILLIANT	2.00 CARATS	H
7.93 X 7.72 X 4.73 MM	Carat Weight	Color Grade	Clarity Grade	Depth
63%	Table	61.5%	65%	Medium (Faceted)
Pointed	Culet	VERY GOOD	EXCELLENT	NONE
LABGROWN IGI LG539225326	Inscription(s)	Comments:	The Laboratory Grown Diamond was created by Chemical Vapor Deposition (CVD) growth process and may include post-growth treatment. Type IIa	