



**ELECTRONIC COPY**

## LABORATORY GROWN DIAMOND REPORT

July 26, 2022	
IGI Report Number	LG539228239
Description	LABORATORY GROWN DIAMOND
Shape and Cutting Style	ROUND BRILLIANT
Measurements	9.69 - 9.75 X 5.96 MM

## GRADING RESULTS

Carat Weight	3.46 CARATS
Color Grade	H
Clarity Grade	VVS 2
Cut Grade	IDEAL

### ADDITIONAL GRADING INFORMATION

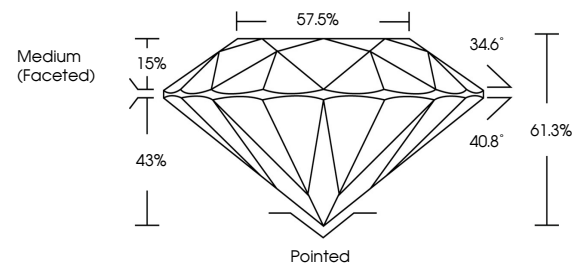
Polish	EXCELLENT
Symmetry	EXCELLENT
Fluorescence	NONE

Inscription(s) LABGROWN IGI LG539228239

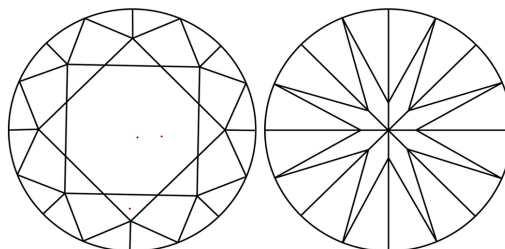
Comments: This Laboratory Grown Diamond was created by Chemical Vapor Deposition (CVD) growth process and may include post-growth treatment.  
Type IIa

LG539228239

## PROPORTIONS



## CLARITY CHARACTERISTICS

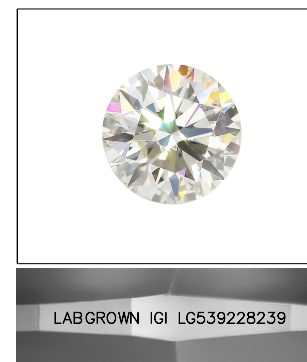


### KEY TO SYMBOLS

Red symbols indicate internal characteristics.  
Green symbols indicate external characteristics.

## GRADING SCALES

COLOR GRADING SCALE	CL		NC		FT		VLT		LT	
	COLORLESS D-F		NEAR COLORLESS G-J		FAINT K-M		VERY LIGHT N-R		LIGHT S-Z	
CLARITY (10x) GRADING SCALE	FL IF		VVS		VS		SI		I	
	FLAWLESS INTERNALLY FLAWLESS		VERY VERY SLIGHTLY INCLUDED		VERY SLIGHTLY INCLUDED		SLIGHTLY INCLUDED		INCLUDED	

LASERSCRIBE<sup>SM</sup>

Sample Image Used



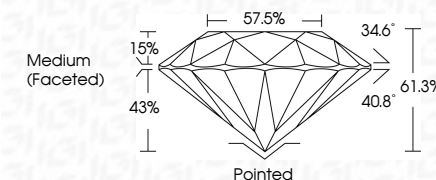
© IGI 2020, International Gemological Institute

FD - 10 20

**www.igi.org**

## LABORATORY GROWN DIAMOND REPORT

July 26, 2022	
IGI Report Number	LG539228239
Description	LABORATORY GROWN DIAMOND
Shape and Cutting Style	ROUND BRILLIANT
Measurements	9.69 - 9.75 X 5.96 MM
<b>GRADING RESULTS</b>	
Carat Weight	3.46 CARATS
Color Grade	H
Clarity Grade	VVS 2
Cut Grade	IDEAL



### ADDITIONAL GRADING INFORMATION

Polish	EXCELLENT
Symmetry	EXCELLENT
Fluorescence	NONE
Inscription(s)	LABGROWN IGI LG539228239

Inscription(s) **LABGROWN IGI LG539228239**

Comments: This Laboratory Grown Diamond was created by Chemical Vapor Deposition (CVD) growth process and may include post-growth treatment.  
Type IIa



July 26, 2022	G Report No. LG59228239	
ROUND BRILLIANT		
Carat Weight	Color Grade	Clarity Grade
1.69 - 9.75 X 5.95 MM		
3.46 CARATS	H	VVS 2
		IDEAL
		61.3%
		57.5%
		Medium (feathered)
Culet	Polish	Pointed
Symmetry	Excellent	Excellent
Fluorescence		NONE
Table		LABGROWN (G1)
Depth		LG59228239
Comments:		
This Laboratory Grown Diamond was certified by the Gemological Institute of America (GIA) as a (GVD) growth process and may include post-growth treatment. Type IIA		