



ELECTRONIC COPY

LABORATORY GROWN DIAMOND REPORT

| | |
|-------------------------|-----------------------------|
| July 27, 2022 | |
| IGI Report Number | LG539228750 |
| Description | LABORATORY GROWN DIAMOND |
| Shape and Cutting Style | ROUND BRILLIANT |
| Measurements | 9.14 - 9.18 X 5.63 MM |

GRADING RESULTS

| | |
|---------------|-------------|
| Carat Weight | 2.90 CARATS |
| Color Grade | G |
| Clarity Grade | VS 1 |
| Cut Grade | IDEAL |

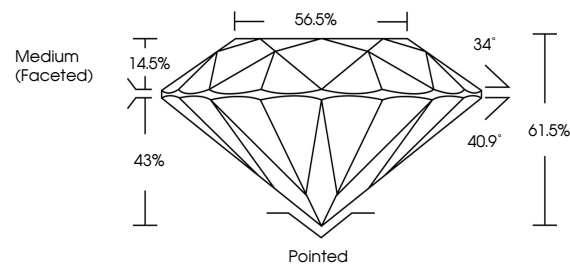
ADDITIONAL GRADING INFORMATION

| | |
|----------------|--------------------------|
| Polish | EXCELLENT |
| Symmetry | EXCELLENT |
| Fluorescence | NONE |
| Inscription(s) | LABGROWN IGI LG539228750 |

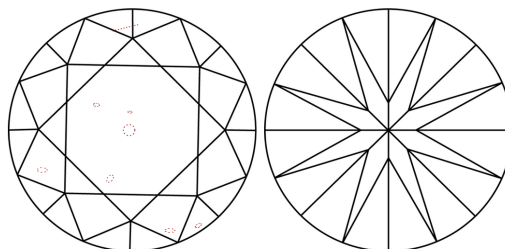
Comments: HEARTS & ARROWS
This Laboratory Grown Diamond was created by
Chemical Vapor Deposition (CVD) growth process and
may include post-growth treatment.
Type IIa

LG539228750

PROPORTIONS

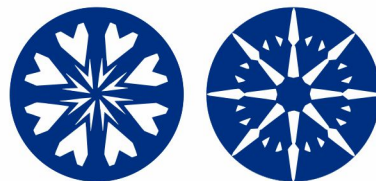


CLARITY CHARACTERISTICS



KEY TO SYMBOLS

Red symbols indicate internal characteristics.
Green symbols indicate external characteristics.

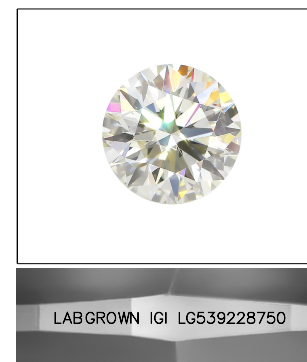


www.igi.org

LABORATORY GROWN
DIAMOND REPORT

GRADING SCALES

| | | | | | | | | | | |
|-----------------------------|------------------------------|--|-----------------------------|--|------------------------|--|-------------------|--|-----------|--|
| COLOR GRADING SCALE | CL | | NC | | FT | | VLT | | LT | |
| | COLORLESS D-F | | NEAR COLORLESS G-J | | FAINT K-M | | VERY LIGHT N-R | | LIGHT S-Z | |
| CLARITY (10x) GRADING SCALE | FL IF | | VVS | | VS | | SI | | I | |
| | FLAWLESS INTERNALLY FLAWLESS | | VERY VERY SLIGHTLY INCLUDED | | VERY SLIGHTLY INCLUDED | | SLIGHTLY INCLUDED | | INCLUDED | |

LASERSCRIBESM

Sample Image Used



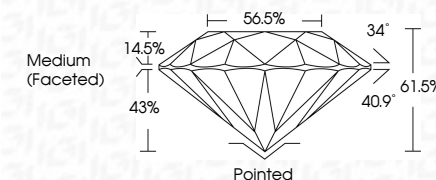
© IGI 2020, International Gemological Institute

FD - 10 20

THIS DOCUMENT WAS PRODUCED WITH THE FOLLOWING SECURITY MEASURES: SPECIAL DOCUMENT PAPER, INK SCREENS, WATERMARK, BACKGROUND DESIGNS, HOLOGRAM AND OTHER SECURITY FEATURES NOT LISTED AND DO EXCEED DOCUMENT SECURITY INDUSTRY GUIDELINE

LABORATORY GROWN DIAMOND REPORT

| | |
|-------------------------|-----------------------------|
| July 27, 2022 | |
| IGI Report Number | LG539228750 |
| Description | LABORATORY GROWN DIAMOND |
| Shape and Cutting Style | ROUND BRILLIANT |
| Measurements | 9.14 - 9.18 X 5.63 MM |
| GRADING RESULTS | |
| Carat Weight | 2.90 CARATS |
| Color Grade | G |
| Clarity Grade | VS 1 |
| Cut Grade | IDEAL |



ADDITIONAL GRADING INFORMATION

| | |
|----------------|--------------------------|
| Polish | EXCELLENT |
| Symmetry | EXCELLENT |
| Fluorescence | NONE |
| Inscription(s) | LABGROWN IGI LG539228750 |

Inscription(s) **LABGROWN IGI LG539228750**

Comments: HEARTS & ARROWS
This Laboratory Grown Diamond was created by
Chemical Vapor Deposition (CVD) growth process
and may include post-growth treatment.
Type IIa



| | | | | | | | | |
|-----------------------|---------------------------|-------------|-------|----------------|--|------------------------------|--|---|
| July 27, 2022 | GI Report No. LGS95228760 | 2.90 CARATS | | VS1 | | Polished | | Comments: HEARTS & ARROWS The Laboratory Grown Diamond was created by Chemical Vapor Deposition (CVD) growth process and may include post-growth treatment. |
| ROUND BRILLIANT | | | | IDEAL | | EXCELLENT | | |
| 5.14 - 5.19 X 5.63 MM | | | 61.5% | | | EXCELLENT | | |
| Color Weight | | | 56.5% | | | NONE | | |
| Color Grade | | | | Medium (Faced) | | LAB-GROWN IGI LGS95228760 | | |
| Clarity Grade | | | | | | Fluorescence | | |
| Cut Grade | | | | | | Symmetry | | |
| Depth | | | | | | Proportions(s) | | |
| Table | | | | | | | | |
| Girdle | | | | | | | | |