



**ELECTRONIC COPY**

**LABORATORY GROWN DIAMOND REPORT**

August 2, 2022  
 IGI Report Number **LG539230024**  
 Description **LABORATORY GROWN  
DIAMOND**  
 Shape and Cutting Style **CUSHION BRILLIANT**  
 Measurements **7.77 X 6.24 X 4.08 MM**

**GRADING RESULTS**

Carat Weight **1.51 CARAT**  
 Color Grade **D**  
 Clarity Grade **SI 1**

**ADDITIONAL GRADING INFORMATION**

Polish **EXCELLENT**  
 Symmetry **EXCELLENT**  
 Fluorescence **NONE**

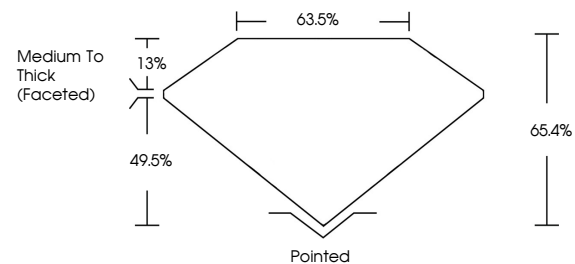
Inscription(s) **LABGROWN IGI LG539230024**

Comments: As Grown - No indication of post-growth treatment.

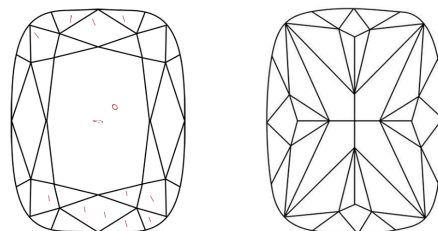
This Laboratory Grown Diamond was created by High Pressure High Temperature (HPHT) growth process. Type II

**LG539230024**

**PROPORTIONS**



**CLARITY CHARACTERISTICS**



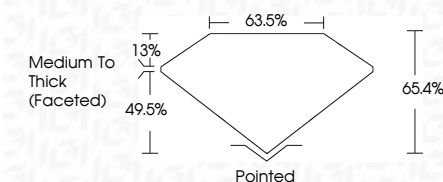
**KEY TO SYMBOLS**

Red symbols indicate internal characteristics.  
 Green symbols indicate external characteristics.

**GRADING SCALES**

COLOR GRADING SCALE	CL	NC	FT	VLT	LT	
	COLORLESS D-F	NEAR COLORLESS G-J	FAINT K-M	VERY LIGHT N-R	LIGHT S-Z	
CLARITY (10x) GRADING SCALE	FL	IF	VVS	VS	SI	I
	FLAWLESS INTERNALLY FLAWLESS	VERY VERY SLIGHTLY INCLUDED	VERY SLIGHTLY INCLUDED	SLIGHTLY INCLUDED	INCLUDED	

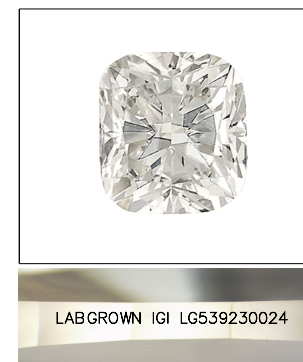
August 2, 2022  
 IGI Report Number **LG539230024**  
 Description **LABORATORY GROWN  
DIAMOND**  
 Shape and Cutting Style **CUSHION BRILLIANT**  
 Measurements **7.77 X 6.24 X 4.08 MM**  
**GRADING RESULTS**  
 Carat Weight **1.51 CARAT**  
 Color Grade **D**  
 Clarity Grade **SI 1**



**ADDITIONAL GRADING INFORMATION**

Polish **EXCELLENT**  
 Symmetry **EXCELLENT**  
 Fluorescence **NONE**  
 Inscription(s) **LABGROWN IGI LG539230024**

Comments: As Grown - No indication of post-growth treatment.  
 This Laboratory Grown Diamond was created by High Pressure High Temperature (HPHT) growth process. Type II



LABGROWN IGI LG539230024

**LASERSCRIBE<sup>SM</sup>**

Sample Image Used



August 2, 2022	IGI Report No <b>LG539230024</b>	Carat Weight <b>1.51 CARAT</b>	Color Grade <b>D</b>	Depth <b>49.5%</b>	Table <b>13%</b>	Width <b>63.5%</b>	Height <b>65.4%</b>	Culet <b>Pointed</b>	Polish <b>EXCELLENT</b>	Symmetry <b>EXCELLENT</b>	Fluorescence <b>NONE</b>	Inscription(s) <b>LABGROWN IGI LG539230024</b>	Comments: <b>As Grown - No indication of post-growth treatment. This Laboratory Grown Diamond was created by High Pressure High Temperature (HPHT) growth process. Type II</b>
----------------	----------------------------------	--------------------------------	----------------------	--------------------	------------------	--------------------	---------------------	----------------------	-------------------------	---------------------------	--------------------------	--	--