



# INTERNATIONAL GEMOLOGICAL INSTITUTE

ELECTRONIC COPY

## LABORATORY GROWN DIAMOND REPORT

LG539230462

### LABORATORY GROWN DIAMOND REPORT

#### IGI LABORATORY GROWN DIAMOND IDENTIFICATION REPORT

July 28, 2022  
IGI Report Number LG539230462  
Description LABORATORY GROWN DIAMOND  
Shape and Cutting Style PEAR BRILLIANT  
Measurements 8.29 X 5.30 X 3.25 MM

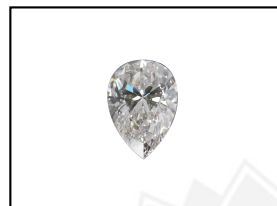
#### GRADING RESULTS

Carat Weight 0.81 CARAT  
Color Grade G  
Clarity Grade VS 1

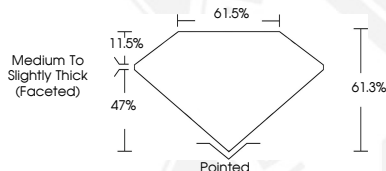
#### ADDITIONAL GRADING INFORMATION

Polish EXCELLENT  
Symmetry EXCELLENT  
Fluorescence NONE  
Inscription(s) LABGROWN IGI LG539230462

Comments: This Laboratory Grown Diamond was created by Chemical Vapor Deposition (CVD) growth process and may include post-growth treatment.  
Type IIa



LASERSCRIBE<sup>SM</sup>  
Sample Images Used



#### IGI LABORATORY GROWN DIAMOND ID REPORT

July 28, 2022  
IGI Report Number LG539230462  
PEAR BRILLIANT  
8.29 X 5.30 X 3.25 MM  
Carat Weight 0.81 CARAT  
Color Grade G  
Clarity Grade VS 1  
Polish EXCELLENT  
Symmetry EXCELLENT  
Fluorescence NONE  
Inscription(s) LABGROWN IGI LG539230462

Comments: This Laboratory Grown Diamond was created by Chemical Vapor Deposition (CVD) growth process and may include post-growth treatment.  
Type IIa

#### IGI LABORATORY GROWN DIAMOND ID REPORT

July 28, 2022  
IGI Report Number LG539230462  
PEAR BRILLIANT  
8.29 X 5.30 X 3.25 MM  
Carat Weight 0.81 CARAT  
Color Grade G  
Clarity Grade VS 1  
Polish EXCELLENT  
Symmetry EXCELLENT  
Fluorescence NONE  
Inscription(s) LABGROWN IGI LG539230462

Comments: This Laboratory Grown Diamond was created by Chemical Vapor Deposition (CVD) growth process and may include post-growth treatment.  
Type IIa



THIS DOCUMENT WAS PRODUCED WITH THE FOLLOWING SECURITY MEASURES: SPECIAL DOCUMENT PAPER, INK SCREENS, WATERMARK, BACKGROUND DESIGN, HOLOGRAM AND OTHER SECURITY FEATURES NOT LISTED AND DO EXCEED DOCUMENT SECURITY INDUSTRY GUIDELINES.

For terms & conditions and to verify this report, please visit [www.igi.org](http://www.igi.org)