



**ELECTRONIC COPY**

**LABORATORY GROWN DIAMOND REPORT**

July 28, 2022  
 IGI Report Number **LG539234494**  
 Description **LABORATORY GROWN  
DIAMOND**  
 Shape and Cutting Style **CUT CORNERED RECTANGULAR  
MODIFIED BRILLIANT**  
 Measurements **7.21 X 5.21 X 3.44 MM**

**GRADING RESULTS**

Carat Weight **1.06 CARAT**  
 Color Grade **D**  
 Clarity Grade **SI 1**

**ADDITIONAL GRADING INFORMATION**

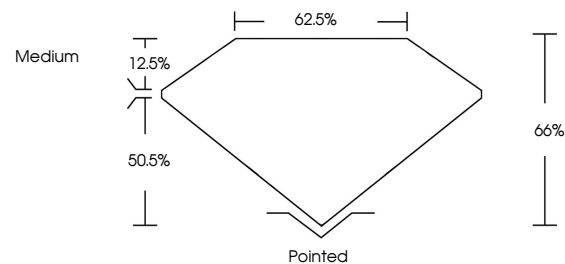
Polish **EXCELLENT**  
 Symmetry **EXCELLENT**  
 Fluorescence **NONE**

Inscription(s) **LABGROWN IGI LG539234494**

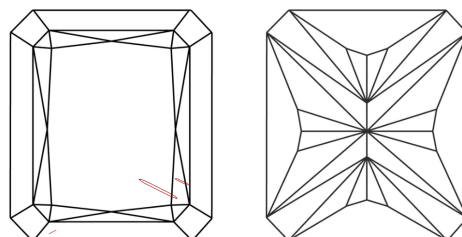
Comments: As Grown - No indication of post-growth treatment.  
 This Laboratory Grown Diamond was created by High Pressure High Temperature (HPHT) growth process. Type II

LG539234494

**PROPORTIONS**



**CLARITY CHARACTERISTICS**

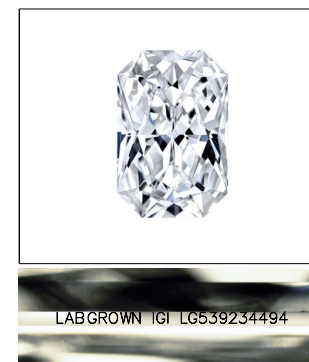


**KEY TO SYMBOLS**

Red symbols indicate internal characteristics.  
 Green symbols indicate external characteristics.

**GRADING SCALES**

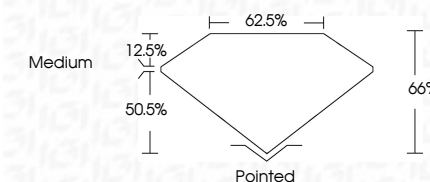
COLOR GRADING SCALE	CL	NC	FT	VLT	LT	
	COLORLESS D-F	NEAR COLORLESS G-J	FAINT K-M	VERY LIGHT N-R	LIGHT S-Z	
CLARITY (10x) GRADING SCALE	FL	IF	VVS	VS	SI	I
	FLAWLESS INTERNALLY FLAWLESS	VERY VERY SLIGHTLY INCLUDED	VERY SLIGHTLY INCLUDED	SLIGHTLY INCLUDED	INCLUDED	INCLUDED



**LASERSCRIBE<sup>SM</sup>**

Sample Image Used

July 28, 2022  
 IGI Report Number **LG539234494**  
 Description **LABORATORY GROWN  
DIAMOND**  
 Shape and Cutting Style **CUT CORNERED  
RECTANGULAR MODIFIED  
BRILLIANT**  
 Measurements **7.21 X 5.21 X 3.44 MM**  
**GRADING RESULTS**  
 Carat Weight **1.06 CARAT**  
 Color Grade **D**  
 Clarity Grade **SI 1**



**ADDITIONAL GRADING INFORMATION**

Polish **EXCELLENT**  
 Symmetry **EXCELLENT**  
 Fluorescence **NONE**  
 Inscription(s) **LABGROWN IGI LG539234494**

Comments: As Grown - No indication of post-growth treatment.  
 This Laboratory Grown Diamond was created by High Pressure High Temperature (HPHT) growth process. Type II



**IGI**



July 28, 2022	IGI Report No LG539234494	1.06 CARAT	D	SI 1	Pointed	EXCELLENT	EXCELLENT	NONE	LABGROWN IGI LG539234494	As Grown - No indication of post-growth treatment.
CUT CORNERED RECT. MODIFIED	7.21 X 5.21 X 3.44 MM	Color Weight	Color Grade	Clarity Grade	Depth	Symmetry	Fluorescence	Inscription(s)	Comments:	The Laboratory Grown Diamond was created by High Pressure High Temperature (HPHT) growth process. Type II
					66%	EXCELLENT	NONE	LABGROWN IGI LG539234494		
					Medium	EXCELLENT	NONE	LABGROWN IGI LG539234494		