



ELECTRONIC COPY

LABORATORY GROWN DIAMOND REPORT

July 29, 2022
IGI Report Number LG539234560
Description LABORATORY GROWN DIAMOND
Shape and Cutting Style ROUND BRILLIANT
Measurements 9.91 - 9.97 X 6.17 MM

GRADING RESULTS

Carat Weight 3.81 CARATS
Color Grade E
Clarity Grade VS 1
Cut Grade IDEAL

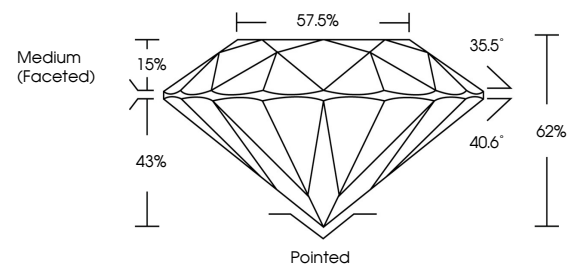
ADDITIONAL GRADING INFORMATION

Polish EXCELLENT
Symmetry EXCELLENT
Fluorescence NONE
Inscription(s) LABGROWN IGI LG539234560

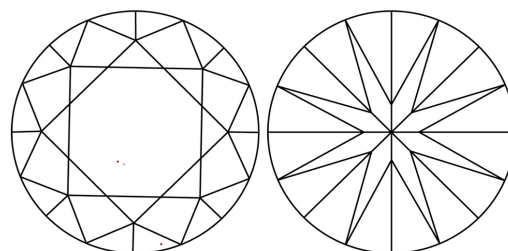
Comments: As Grown - No indication of post-growth treatment. This Laboratory Grown Diamond was created by High Pressure High Temperature (HPHT) growth process. Type II

LG539234560

PROPORTIONS



CLARITY CHARACTERISTICS



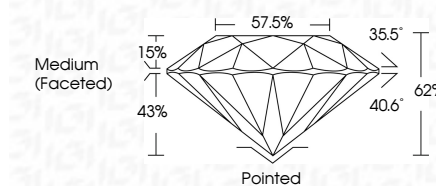
KEY TO SYMBOLS

Red symbols indicate internal characteristics. Green symbols indicate external characteristics.

July 29, 2022
IGI Report Number LG539234560
Description LABORATORY GROWN DIAMOND
Shape and Cutting Style ROUND BRILLIANT
Measurements 9.91 - 9.97 X 6.17 MM

GRADING RESULTS

Carat Weight 3.81 CARATS
Color Grade E
Clarity Grade VS 1
Cut Grade IDEAL

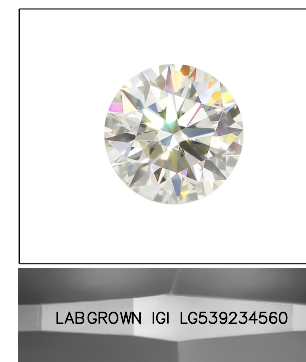


ADDITIONAL GRADING INFORMATION

Polish EXCELLENT
Symmetry EXCELLENT
Fluorescence NONE
Inscription(s) LABGROWN IGI LG539234560
Comments: As Grown - No indication of post-growth treatment. This Laboratory Grown Diamond was created by High Pressure High Temperature (HPHT) growth process. Type II

GRADING SCALES

Table with 5 columns for Color Grading Scale (CL, NC, FT, VLT, LT) and 5 columns for Clarity (10x) Grading Scale (FL, IF, VVS, VS, SI, I).



LASERSCRIBE SM Sample Image Used



July 29, 2022
IGI Report No LG539234560
ROUND BRILLIANT
9.91 - 9.97 X 6.17 MM
3.81 CARATS
E
VS 1
IDEAL
62%
57.5%
Medium (Faceted)
Pointed
EXCELLENT
EXCELLENT
NONE
LABGROWN IGI LG539234560
As Grown - No indication of post-growth treatment. The Laboratory Grown Diamond was created by High Pressure High Temperature (HPHT) growth process. Type II