



ELECTRONIC COPY

LABORATORY GROWN DIAMOND REPORT

August 1, 2022	
IGI Report Number	LG539235080
Description	LABORATORY GROWN DIAMOND
Shape and Cutting Style	ROUND BRILLIANT
Measurements	8.17 - 8.22 X 5.01 MM

GRADING RESULTS

Carat Weight	2.09 CARATS
Color Grade	F
Clarity Grade	VS 2
Cut Grade	IDEAL

ADDITIONAL GRADING INFORMATION

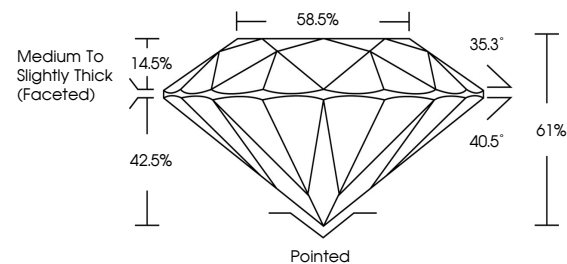
Polish	EXCELLENT
Symmetry	EXCELLENT
Fluorescence	NONE

Inscription(s) LABGROWN | G | LG539235080

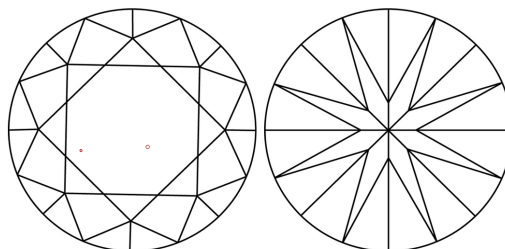
Comments: This Laboratory Grown Diamond was created by Chemical Vapor Deposition (CVD) growth process and may include post-growth treatment.
Type IIa

LG539235080

PROPORTIONS



CLARITY CHARACTERISTICS

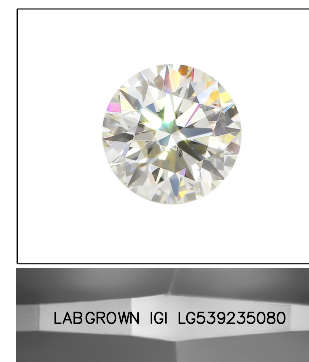


KEY TO SYMBOLS

Red symbols indicate internal characteristics.
Green symbols indicate external characteristics.

GRADING SCALES

COLOR GRADING SCALE	CL		NC		FT		VLT		LT	
	COLORLESS D-F		NEAR COLORLESS G-J		FAINT K-M		VERY LIGHT N-R		LIGHT S-Z	
CLARITY (10x) GRADING SCALE	FL IF		VVS		VS		SI		I	
	FLAWLESS INTERNALLY FLAWLESS		VERY VERY SLIGHTLY INCLUDED		VERY SLIGHTLY INCLUDED		SLIGHTLY INCLUDED		INCLUDED	

LASERSCRIBESM

Sample Image Used

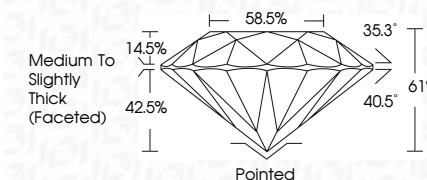


© IGI 2020, International Gemological Institute

FD - 10 20

LABORATORY GROWN DIAMOND REPORT

August 1, 2022	
IGI Report Number	LG539235080
Description	LABORATORY GROWN DIAMOND
Shape and Cutting Style	ROUND BRILLIANT
Measurements	8.17 - 8.22 X 5.01 MM
GRADING RESULTS	
Carat Weight	2.09 CARATS
Color Grade	F
Clarity Grade	VS 2
Cut Grade	IDEAL



ADDITIONAL GRADING INFORMATION

Polish	EXCELLENT
Symmetry	EXCELLENT
Fluorescence	NONE
Inscription(s)	LABGROWN IGI LG539235080

Comments: This Laboratory Grown Diamond was created by Chemical Vapor Deposition (CVD) growth process and may include post-growth treatment.
Type IIa



August 1, 2022	GI Report No. LG59235090	Carat Weight	2.09 CARATS	Polished	Comments:
GI Report No. LG59235090	ROUND BRILLIANT	Color Grade	F	EXCELLENT	This Laboratory Growth Vapor was created by Chemical Vapor Deposition (CVD) growth process and may include post growth treatment.
	A17 - 6.22 X 5.01 MM	Clarity Grade	VS 2	EXCELLENT	None
		Cut Grade	IDEAL	EXCELLENT	LAGSOWN (set)
		Depth	61%		LG59235090
		Table	58.5%		
		Girdle	Medium To Slightly Thick (faceted)		
		Culet			
		Polish			
		Symmetry			
		Fluorescence			
		Inscriptions			