



**INTERNATIONAL  
GEMOLOGICAL  
INSTITUTE**

**ELECTRONIC COPY**

**LABORATORY GROWN  
DIAMOND REPORT**

**IGI LABORATORY GROWN  
DIAMOND ID REPORT**

September 12, 2022  
IGI Report Number **LG539245435**

**LABORATORY GROWN DIAMOND REPORT**

**IGI LABORATORY GROWN DIAMOND IDENTIFICATION REPORT**

September 12, 2022  
IGI Report Number **LG539245435**  
Description **LABORATORY GROWN DIAMOND**  
Shape and Cutting Style **PEAR BRILLIANT**  
Measurements **6.53 X 3.98 X 2.40 MM**

**GRADING RESULTS**

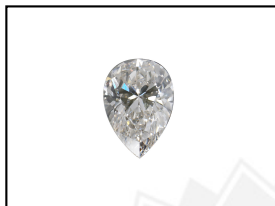
Carat Weight **0.38 CARAT**  
Color Grade **F**  
Clarity Grade **VS 2**

**ADDITIONAL GRADING INFORMATION**

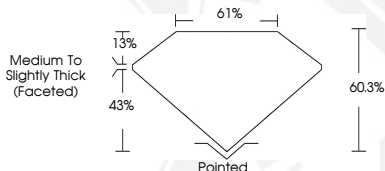
Polish **VERY GOOD**  
Symmetry **VERY GOOD**  
Fluorescence **NONE**  
Inscription(s) **LABGROWN IGI LG539245435**

Comments: This Laboratory Grown Diamond was created by Chemical Vapor Deposition (CVD) growth process and may include post-growth treatment.  
Type Ila

**LG539245435**



**LASERSCRIBE<sup>SM</sup>**  
Sample Images Used



**PEAR BRILLIANT**  
**6.53 X 3.98 X 2.40 MM**  
Carat Weight **0.38 CARAT**  
Color Grade **F**  
Clarity Grade **VS 2**  
Polish **VERY GOOD**  
Symmetry **VERY GOOD**  
Fluorescence **NONE**  
Inscription(s) **LABGROWN IGI  
LG539245435**

Comments: This Laboratory Grown Diamond was created by Chemical Vapor Deposition (CVD) growth process and may include post-growth treatment.  
Type Ila

**IGI LABORATORY GROWN  
DIAMOND ID REPORT**

September 12, 2022  
IGI Report Number **LG539245435**

**PEAR BRILLIANT**  
**6.53 X 3.98 X 2.40 MM**  
Carat Weight **0.38 CARAT**  
Color Grade **F**  
Clarity Grade **VS 2**  
Polish **VERY GOOD**  
Symmetry **VERY GOOD**  
Fluorescence **NONE**  
Inscription(s) **LABGROWN IGI  
LG539245435**

Comments: This Laboratory Grown Diamond was created by Chemical Vapor Deposition (CVD) growth process and may include post-growth treatment.  
Type Ila

THIS DOCUMENT WAS PRODUCED WITH THE FOLLOWING SECURITY MEASURES: SPECIAL DOCUMENT PAPER, INK SCREENS, WATERMARK, BACKGROUND DESIGN, HOLOGRAM AND OTHER SECURITY FEATURES NOT LISTED AND DO EXCEED DOCUMENT SECURITY INDUSTRY GUIDELINES.

For terms & conditions and to verify this report, please visit [www.igi.org](http://www.igi.org)