



ELECTRONIC COPY

LABORATORY GROWN DIAMOND REPORT

August 3, 2022	
IGI Report Number	LG541257390
Description	LABORATORY GROWN DIAMOND
Shape and Cutting Style	CUT CORNERED RECTANGULAR MODIFIED BRILLIANT
Measurements	7.97 X 5.69 X 3.74 MM

GRADING RESULTS

Carat Weight	1.53 CARAT
Color Grade	I
Clarity Grade	VS 2

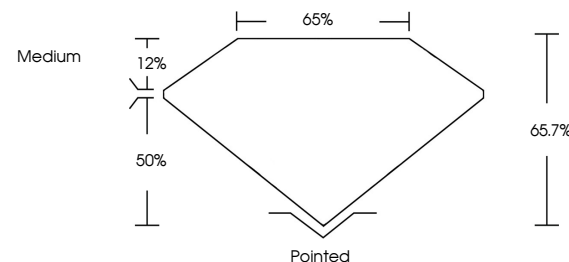
ADDITIONAL GRADING INFORMATION

Polish	EXCELLENT
Symmetry	EXCELLENT
Fluorescence	NONE

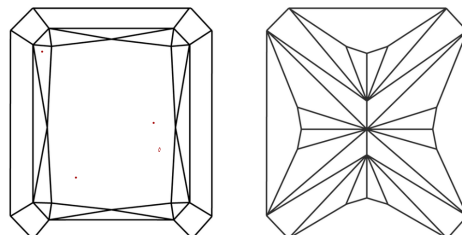
Inscription(s) **LABGROWN IGI LG541257390**
 Comments: This Laboratory Grown Diamond was created by Chemical Vapor Deposition (CVD) growth process and may include post-growth treatment. Type IIa

LG541257390

PROPORTIONS



CLARITY CHARACTERISTICS

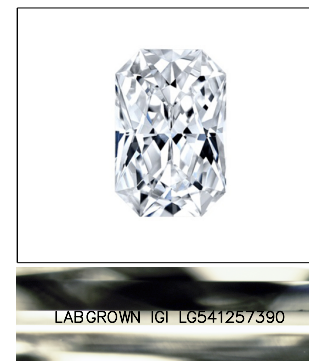


KEY TO SYMBOLS

Red symbols indicate internal characteristics.
Green symbols indicate external characteristics.

GRADING SCALES

COLOR GRADING SCALE	CL		NC	FT	VLT	LT
	COLORLESS D-F		NEAR COLORLESS G-J	FAINT K-M	VERY LIGHT N-R	LIGHT S-Z
CLARITY (10x) GRADING SCALE	FL	IF	VVS	VS	SI	I
	FLAWLESS INTERNALLY FLAWLESS		VERY VERY SLIGHTLY INCLUDED	VERY SLIGHTLY INCLUDED	SLIGHTLY INCLUDED	INCLUDED

LASERSCRIBESM

Sample Image Used



© IGI 2020, International Gemological Institute

FD - 10 20

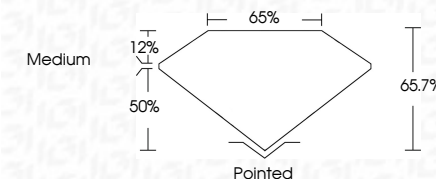
www.igi.org

LABORATORY GROWN DIAMOND REPORT

August 3, 2022	
IGI Report Number	LG541257390
Description	LABORATORY GROWN DIAMOND
Shape and Cutting Style	CUT CORNERED RECTANGULAR MODIFIED BRILLIANT
Measurements	7.97 X 5.69 X 3.74 MM

GRADING RESULTS

Carat Weight	1.53 CARAT
Color Grade	I
Clarity Grade	VS 2



ADDITIONAL GRADING INFORMATION

Polish	EXCELLENT
Symmetry	EXCELLENT
Fluorescence	NONE
Inscription(s)	LABGROWN IGI LG541257390

Comments: This Laboratory Grown Diamond was created by Chemical Vapor Deposition (CVD) growth process and may include post-growth treatment.
Type IIa



August 3, 2022	1.53 CARAT	VS 2	68.7%	Medium	Pointed					
GI Report No. LG54126790	Color Grade	VS 2	68.7%		EXCELLENT	Symmetry	None			
21 CT COVERED BEC. MODIFIED	Carat Weight	VS 2	68.7%		EXCELLENT	Fluorescence	None			
1.97 x 0.69 x 3.74 MM	Color Grade	VS 2	68.7%		EXCELLENT	Inscription(s)	LAGERQWJN LG1			
	Carat Weight	VS 2	68.7%		EXCELLENT		LG54126790			
	Color Grade	VS 2	68.7%		EXCELLENT					
	Carat Weight	VS 2	68.7%		EXCELLENT					
	Color Grade	VS 2	68.7%		EXCELLENT					
	Carat Weight	VS 2	68.7%		EXCELLENT					
	Color Grade	VS 2	68.7%		EXCELLENT					
	Carat Weight	VS 2	68.7%		EXCELLENT					
	Color Grade	VS 2	68.7%		EXCELLENT					
	Carat Weight	VS 2	68.7%		EXCELLENT					
	Color Grade	VS 2	68.7%		EXCELLENT					
	Carat Weight	VS 2	68.7%		EXCELLENT					
	Color Grade	VS 2	68.7%		EXCELLENT					
	Carat Weight	VS 2	68.7%		EXCELLENT					
	Color Grade	VS 2	68.7%		EXCELLENT					
	Carat Weight	VS 2	68.7%		EXCELLENT					
	Color Grade	VS 2	68.7%		EXCELLENT					
	Carat Weight	VS 2	68.7%		EXCELLENT					
	Color Grade	VS 2	68.7%		EXCELLENT					
	Carat Weight	VS 2	68.7%		EXCELLENT					
	Color Grade	VS 2	68.7%		EXCELLENT					
	Carat Weight	VS 2	68.7%		EXCELLENT					
	Color Grade	VS 2	68.7%		EXCELLENT					
	Carat Weight	VS 2	68.7%		EXCELLENT					
	Color Grade	VS 2	68.7%		EXCELLENT					
	Carat Weight	VS 2	68.7%		EXCELLENT					
	Color Grade	VS 2	68.7%		EXCELLENT					
	Carat Weight	VS 2	68.7%		EXCELLENT					
	Color Grade	VS 2	68.7%		EXCELLENT					
	Carat Weight	VS 2	68.7%		EXCELLENT					
	Color Grade	VS 2	68.7%		EXCELLENT					
	Carat Weight	VS 2	68.7%		EXCELLENT					
	Color Grade	VS 2	68.7%		EXCELLENT					
	Carat Weight	VS 2	68.7%		EXCELLENT					
	Color Grade	VS 2	68.7%		EXCELLENT					
	Carat Weight	VS 2	68.7%		EXCELLENT					
	Color Grade	VS 2	68.7%		EXCELLENT					
	Carat Weight	VS 2	68.7%		EXCELLENT					
	Color Grade	VS 2	68.7%		EXCELLENT					
	Carat Weight	VS 2	68.7%		EXCELLENT					
	Color Grade	VS 2	68.7%		EXCELLENT					
	Carat Weight	VS 2	68.7%		EXCELLENT					
	Color Grade	VS 2	68.7%		EXCELLENT					
	Carat Weight	VS 2	68.7%		EXCELLENT					
	Color Grade	VS 2	68.7%		EXCELLENT					
	Carat Weight	VS 2	68.7%		EXCELLENT					
	Color Grade	VS 2	68.7%		EXCELLENT					
	Carat Weight	VS 2								

This Laboratory Grown Diamond was created by Chemical Vapor Deposition (CVD) growth process and may include post-growth treatment.