



ELECTRONIC COPY

LABORATORY GROWN DIAMOND REPORT

August 5, 2022

IGI Report Number **LG541257490**

Description

LABORATORY GROWN
DIAMOND

Shape and Cutting Style **HEART BRILLIANT**

Measurements 8.55 X 9.60 X 5.41 MM

GRADING RESULTS

Carat Weight **2.56 CARATS**

Color Grade G

Clarity Grade	SI 2
---------------	------

ADDITIONAL GRADING INFORMATION

Polish **EXCELLENT**

Symmetry **EXCELLENT**

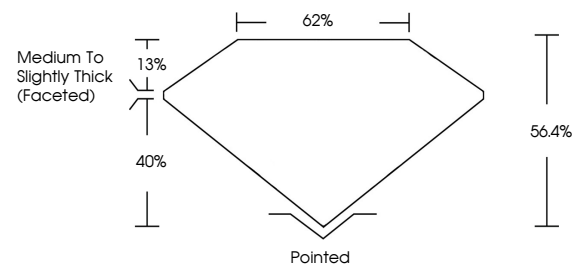
Fluorescence **NONE**

Inscription(s) LABGROWN IGI LG541257490

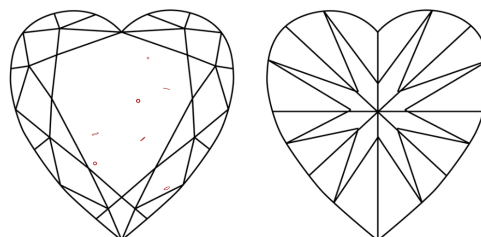
Comments: This Laboratory Grown Diamond was created by Chemical Vapor Deposition (CVD) growth process and may include post-growth treatment.
Type IIa

LG541257490

PROPORTIONS



CLARITY CHARACTERISTICS

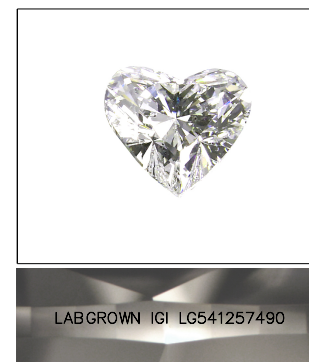


KEY TO SYMBOLS

Red symbols indicate internal characteristics.
Green symbols indicate external characteristics.

GRADING SCALES

COLOR GRADING SCALE	CL		NC	FT	VL	LT
	COLORLESS D-F		NEAR COLORLESS G-J	FAINT K-M	VERY LIGHT N-R	LIGHT S-Z
CLARITY (10x) GRADING SCALE	FL	IF	VVS	VS	SI	I
	FLAWLESS INTERNALLY FLAWLESS		VERY VERY SLIGHTLY INCLUDED	VERY SLIGHTLY INCLUDED	SLIGHTLY INCLUDED	INCLUDED

LASERSCRIBESM

Sample Image Used



© IGI 2020, International Gemological Institute

FD - 10 20

LABORATORY GROWN DIAMOND REPORT

August 5, 2022	
IGI Report Number	LG541257490
Description	LABORATORY GROWN

Shape and Cutting Style **HEART BRILLIANT**

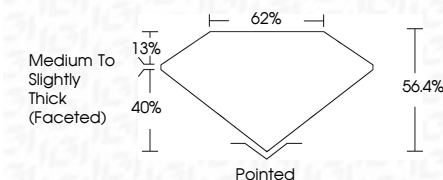
Measurements 8.55 X 9.60 X 5.41 MM

GRADING RESULTS

Carat Weight **2.56 CARATS**

Color Grade G

Clarity Grade SI 2



ADDITIONAL GRADING INFORMATION

Polish **EXCELLENT**Symmetry **EXCELLENT**Fluorescence **NONE**

Inscription(s) LABGROWN IGI LG541257490

Comments: This Laboratory Grown Diamond was created by Chemical Vapor Deposition (CVD) growth process and may include post-growth treatment.
Type IIa



August 5, 2022	2.56 CARATS	Polished
GI Report No. GS41267490	G	EXCELLENT
HEART SHAPED	S I 2	EXCELLENT
5.65 X 5.60 X 5.41 MM	56.4%	NONE
Color Grade	62%	LAPSDOWN (GI)
Clarity Grade	Medium To Slightly Thick (faceted)	LS641267490
Depth		Comments:
Table		This Laboratory Grown Diamond was created by Chemical Vapor Deposition (CVD) growth process and may include post-growth treatment.
Grade		Type IId
Culet		
Polish		
Symmetry		
Fluorescence (incriptions)		