



ELECTRONIC COPY

LABORATORY GROWN DIAMOND REPORT

August 4, 2022
IGI Report Number LG541274112
Description LABORATORY GROWN DIAMOND
Shape and Cutting Style SQUARE CUSHION BRILLIANT
Measurements 6.73 X 6.68 X 4.36 MM

GRADING RESULTS

Carat Weight 1.51 CARAT
Color Grade D
Clarity Grade SI 1

ADDITIONAL GRADING INFORMATION

Polish EXCELLENT
Symmetry EXCELLENT
Fluorescence NONE

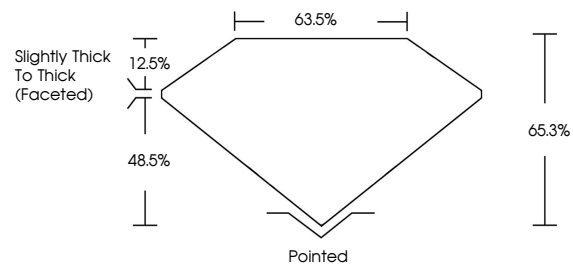
Inscription(s) LABGROWN IGI LG541274112

Comments: As Grown - No indication of post-growth treatment.

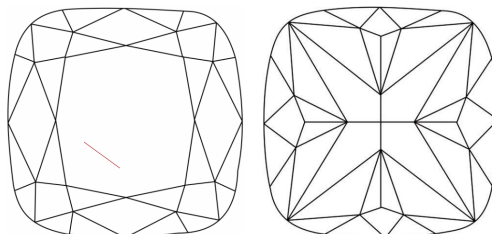
This Laboratory Grown Diamond was created by High Pressure High Temperature (HPHT) growth process. Type II

LG541274112

PROPORTIONS



CLARITY CHARACTERISTICS



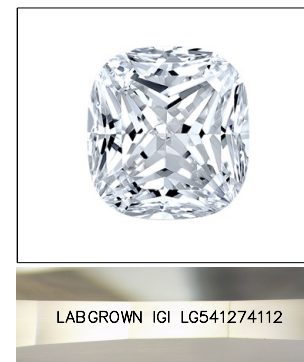
KEY TO SYMBOLS

Red symbols indicate internal characteristics.
Green symbols indicate external characteristics.

August 4, 2022
IGI Report Number LG541274112
Description LABORATORY GROWN DIAMOND
Shape and Cutting Style SQUARE CUSHION BRILLIANT
Measurements 6.73 X 6.68 X 4.36 MM
GRADING RESULTS
Carat Weight 1.51 CARAT
Color Grade D
Clarity Grade SI 1

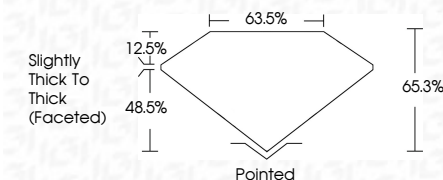
GRADING SCALES

Table showing color grading scales (CL, NC, FT, VLT, LT) and clarity (10x) grading scales (FL, IF, VVS, VS, SI, I) with their corresponding descriptions.



LASERSCRIBESM

Sample Image Used



ADDITIONAL GRADING INFORMATION

Polish EXCELLENT
Symmetry EXCELLENT
Fluorescence NONE
Inscription(s) LABGROWN IGI LG541274112

Comments: As Grown - No indication of post-growth treatment. This Laboratory Grown Diamond was created by High Pressure High Temperature (HPHT) growth process. Type II



IGI



August 4, 2022
IGI Report No LG541274112
SHAPE CUSHION BRILLIANT
6.73 X 6.68 X 4.36 MM
1.51 CARAT
Color Grade D
Clarity Grade SI 1
Depth 65.3%
Table 63.5%
Girdle Slightly Thick To Thick (Faceted)
Culet Pointed
Polish EXCELLENT
Symmetry EXCELLENT
Fluorescence NONE
Inscription(s) LABGROWN IGI LG541274112
Comments: As Grown - No indication of post-growth treatment. This Laboratory Grown Diamond was created by High Pressure High Temperature (HPHT) growth process. Type II