



ELECTRONIC COPY

LABORATORY GROWN DIAMOND REPORT

October 7, 2022
IGI Report Number LG541279387
Description LABORATORY GROWN DIAMOND
Shape and Cutting Style OVAL BRILLIANT
Measurements 10.94 X 7.89 X 4.90 MM

GRADING RESULTS

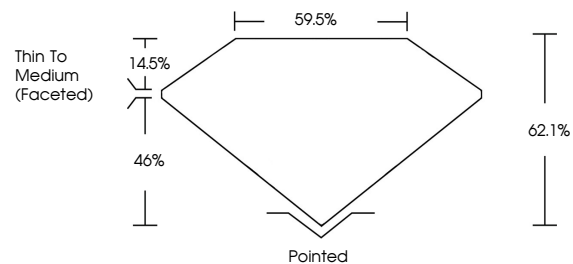
Carat Weight 2.58 CARATS
Color Grade I
Clarity Grade VS 1

ADDITIONAL GRADING INFORMATION

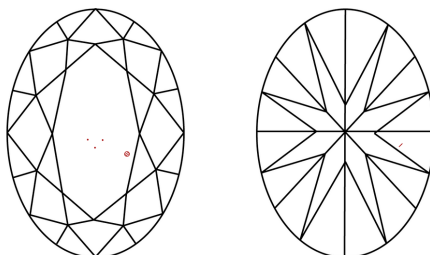
Polish EXCELLENT
Symmetry EXCELLENT
Fluorescence NONE
Inscription(s) LABGROWN (IGI) LG541279387
Comments: This Laboratory Grown Diamond was created by Chemical Vapor Deposition (CVD) growth process and may include post-growth treatment. Type IIa

LG541279387

PROPORTIONS



CLARITY CHARACTERISTICS



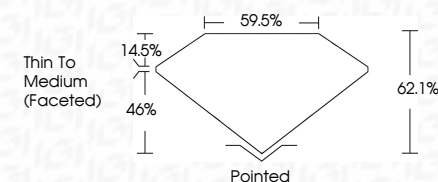
KEY TO SYMBOLS

Red symbols indicate internal characteristics.
Green symbols indicate external characteristics.

GRADING SCALES

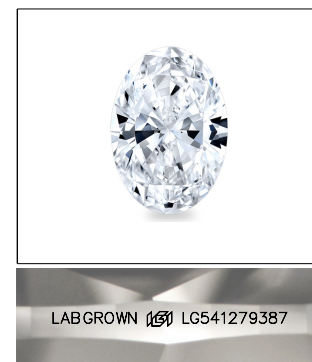
Table with 2 rows and 5 columns showing color and clarity grading scales. Color scale: CL (Colorless D-F), NC (Near colorless G-J), FT (Faint K-M), VLT (Very light N-R), LT (Light S-Z). Clarity scale: FL (Flawless internally flawless), IF (Internally flawless), VVS (Very very slightly included), VS (Very slightly included), SI (Slightly included), I (Included).

October 7, 2022
IGI Report Number LG541279387
Description LABORATORY GROWN DIAMOND
Shape and Cutting Style OVAL BRILLIANT
Measurements 10.94 X 7.89 X 4.90 MM
GRADING RESULTS
Carat Weight 2.58 CARATS
Color Grade I
Clarity Grade VS 1



ADDITIONAL GRADING INFORMATION

Polish EXCELLENT
Symmetry EXCELLENT
Fluorescence NONE
Inscription(s) LABGROWN (IGI) LG541279387
Comments: This Laboratory Grown Diamond was created by Chemical Vapor Deposition (CVD) growth process and may include post-growth treatment. Type IIa



LABGROWN (IGI) LG541279387

LASERSCRIBE SM

Sample Image Used



IGI

October 7, 2022
IGI Report No LG541279387
OVAL BRILLIANT
Carat Weight 2.58 CARATS
Color Grade I
Clarity Grade VS 1
Depth 62.1%
Table 59.5%
Girdle Thin To Medium (Faceted)
Culet Pointed
Polish EXCELLENT
Symmetry EXCELLENT
Fluorescence NONE
Inscription(s) LABGROWN (IGI) LG541279387
Comments: This Laboratory Grown Diamond was created by Chemical Vapor Deposition (CVD) growth process and may include post-growth treatment. Type IIa

The Laboratory Grown Diamond was created by Chemical Vapor Deposition (CVD) growth process and may include post-growth treatment. Type IIa