



**INTERNATIONAL  
GEMOLOGICAL  
INSTITUTE**

**LABORATORY GROWN DIAMOND REPORT**

**IGI LABORATORY GROWN DIAMOND IDENTIFICATION REPORT**

August 29, 2022  
 IGI Report Number LG542204873  
 Description LABORATORY GROWN DIAMOND  
 Shape and Cutting Style PEAR BRILLIANT  
 Measurements 6.36 X 4.16 X 2.56 MM

**GRADING RESULTS**

Carat Weight 0.41 CARAT  
 Color Grade E  
 Clarity Grade VVS 1

**ADDITIONAL GRADING INFORMATION**

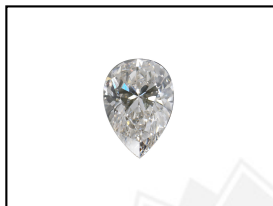
Polish EXCELLENT  
 Symmetry VERY GOOD  
 Fluorescence NONE  
 Inscription(s) LABGROWN IGI LG542204873

Comments: This Laboratory Grown Diamond was created by Chemical Vapor Deposition (CVD) growth process and may include post-growth treatment. Type IIa

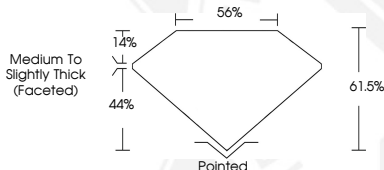
**ELECTRONIC COPY**

**LABORATORY GROWN  
DIAMOND REPORT**

**LG542204873**



**LASERSCRIBE<sup>SM</sup>**  
Sample Images Used



**IGI LABORATORY GROWN  
DIAMOND ID REPORT**

August 29, 2022  
 IGI Report Number **LG542204873**  
**PEAR BRILLIANT**  
**6.36 X 4.16 X 2.56 MM**  
 Carat Weight 0.41 CARAT  
 Color Grade E  
 Clarity Grade VVS 1  
 Polish EXCELLENT  
 Symmetry VERY GOOD  
 Fluorescence NONE  
 Inscription(s) LABGROWN IGI  
 LG542204873

Comments: This Laboratory Grown Diamond was created by Chemical Vapor Deposition (CVD) growth process and may include post-growth treatment. Type IIa

**IGI LABORATORY GROWN  
DIAMOND ID REPORT**

August 29, 2022  
 IGI Report Number **LG542204873**  
**PEAR BRILLIANT**  
**6.36 X 4.16 X 2.56 MM**  
 Carat Weight 0.41 CARAT  
 Color Grade E  
 Clarity Grade VVS 1  
 Polish EXCELLENT  
 Symmetry VERY GOOD  
 Fluorescence NONE  
 Inscription(s) LABGROWN IGI  
 LG542204873

Comments: This Laboratory Grown Diamond was created by Chemical Vapor Deposition (CVD) growth process and may include post-growth treatment. Type IIa

THIS DOCUMENT WAS PRODUCED WITH THE FOLLOWING SECURITY MEASURES: SPECIAL DOCUMENT PAPER, INK SCREENS, WATERMARK, BACKGROUND DESIGN, HOLOGRAM AND OTHER SECURITY FEATURES NOT LISTED AND DO EXCEED DOCUMENT SECURITY INDUSTRY GUIDELINES.

For terms & conditions and to verify this report, please visit [www.igi.org](http://www.igi.org)