



ELECTRONIC COPY

LABORATORY GROWN DIAMOND REPORT

LG542205559

September 6, 2022
IGI Report Number **LG542205559**

Description **LABORATORY GROWN
DIAMOND**
Shape and Cutting Style **OVAL BRILLIANT**
Measurements **12.23 X 8.27 X 5.03 MM**

GRADING RESULTS

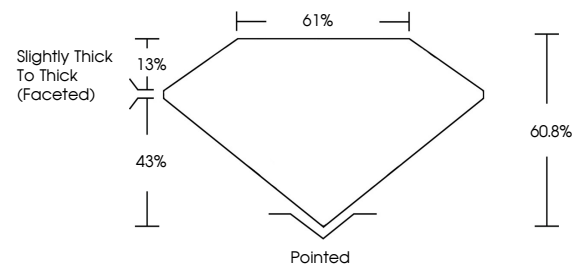
Carat Weight **3.19 CARATS**
Color Grade **H**
Clarity Grade **VS 1**

ADDITIONAL GRADING INFORMATION

Polish **EXCELLENT**
Symmetry **EXCELLENT**
Fluorescence **NONE**

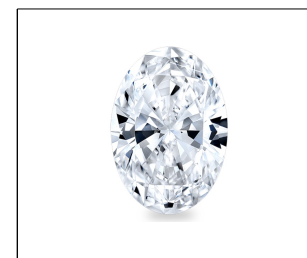
Inscription(s) **LABGROWN IGI LG542205559**
Comments: This Laboratory Grown Diamond was created by Chemical Vapor Deposition (CVD) growth process and may include post-growth treatment. Type IIa

PROPORTIONS



GRADING SCALES

COLOR GRADING SCALE	CL	NC	FT	VLT	LT	
	COLORLESS D-F	NEAR COLORLESS G-J	FAINT K-M	VERY LIGHT N-R	LIGHT S-Z	
CLARITY (10x) GRADING SCALE	FL	IF	VVS	VS	SI	I
	FLAWLESS INTERNALLY FLAWLESS	VERY VERY SLIGHTLY INCLUDED	VERY SLIGHTLY INCLUDED	SLIGHTLY INCLUDED	INCLUDED	



LASERSCRIBESM

Sample Image Used

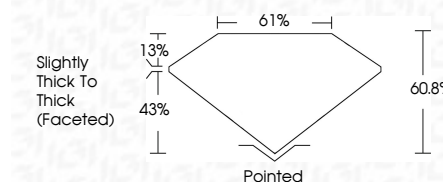


September 6, 2022
IGI Report Number **LG542205559**
Description **LABORATORY GROWN
DIAMOND**
Shape and Cutting Style **OVAL BRILLIANT**
Measurements **12.23 X 8.27 X 5.03 MM**
GRADING RESULTS
Carat Weight **3.19 CARATS**
Color Grade **H**
Clarity Grade **VS 1**

ADDITIONAL GRADING INFORMATION

Polish **EXCELLENT**
Symmetry **EXCELLENT**
Fluorescence **NONE**
Inscription(s) **LABGROWN IGI LG542205559**

Comments: This Laboratory Grown Diamond was created by Chemical Vapor Deposition (CVD) growth process and may include post-growth treatment. Type IIa



IGI

September 6, 2022
IGI Report No **LG542205559**
OVAL BRILLIANT
Carat Weight **3.19 CARATS**
Color Grade **H**
Clarity Grade **VS 1**
Depth **60.8%**
Table **61%**
Girdle **Slightly Thick To Thick (Faceted)**
Culet **Pointed**
Polish **EXCELLENT**
Symmetry **EXCELLENT**
Fluorescence **NONE**
Inscription(s) **LABGROWN IGI LG542205559**
Comments:

The Laboratory Grown Diamond was created by Chemical Vapor Deposition (CVD) growth process and may include post-growth treatment. Type IIa