



ELECTRONIC COPY

LABORATORY GROWN DIAMOND REPORT

August 12, 2022	
IGI Report Number	LG542211582
Description	LABORATORY GROWN DIAMOND
Shape and Cutting Style	CUT CORNERED RECTANGULAR MODIFIED BRILLIANT
Measurements	10.88 X 7.39 X 4.89 MM

GRADING RESULTS

Carat Weight	3.35 CARATS
Color Grade	H
Clarity Grade	VVS 2

ADDITIONAL GRADING INFORMATION

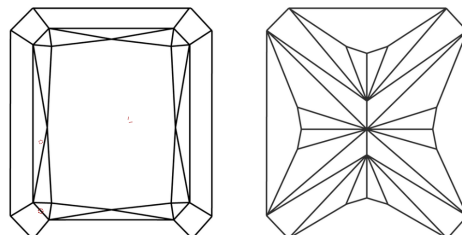
Polish	EXCELLENT
Symmetry	EXCELLENT
Fluorescence	NONE

Inscription(s) **LABGROWN IGI LG542211582**
 Comments: This Laboratory Grown Diamond was created by Chemical Vapor Deposition (CVD) growth process and may include post-growth treatment. Type IIa

Diagram illustrating the proportions of a diamond-shaped building footprint (LG542211582). The footprint is a rhombus with a vertical axis labeled "Medium" and a horizontal axis labeled "Pointed". The proportions are defined by the following dimensions:

- Top width: 65.5%
- Left side width: 12%
- Left side depth: 50.5%
- Right side depth: 66.2%

CLARITY CHARACTERISTICS

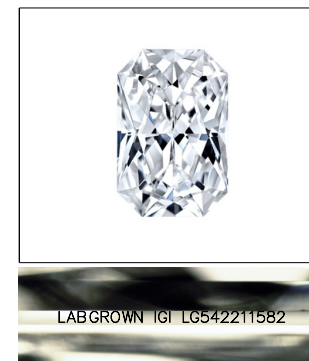


KEY TO SYMBOLS

Red symbols indicate internal characteristics.
Green symbols indicate external characteristics.

GRADING SCALES

COLOR GRADING SCALE	CL		NC		FT		VLT		LT	
	COLORLESS D-F		NEAR COLORLESS G-J		FAINT K-M		VERY LIGHT N-R		LIGHT S-Z	
CLARITY (10x) GRADING SCALE	FL	IF	VVS		VS		SI		I	
	FLAWLESS INTERNALLY FLAWLESS		VERY VERY SLIGHTLY INCLUDED		VERY SLIGHTLY INCLUDED		SLIGHTLY INCLUDED		INCLUDED	

LASERSCRIBESM

Sample Image Used



© IGI 2020, International Gemological Institute

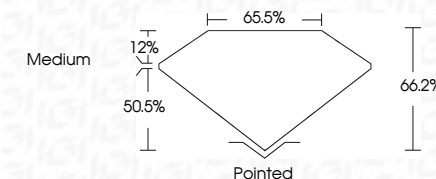
FD - 10 20

www.igi.org

LABORATORY GROWN DIAMOND REPORT

August 12, 2022	
IGI Report Number	LG5422115822
Description	LABORATORY GROWN DIAMOND
Shape and Cutting Style	CUT CORNERED RECTANGULAR MODIFIED BRILLIANT
Measurements	10.88 X 7.39 X 4.89 MM

Carat Weight	3.35 CARATS
Color Grade	H
Clarity Grade	VVS 2



ADDITIONAL GRADING INFORMATION

Polish	EXCELLENT
Symmetry	EXCELLENT
Fluorescence	NONE
Inscription(s)	LABGROWN IGI LG542211582

Inscription(s) LABGROWN IGI LG542211582

Comments: This Laboratory Grown Diamond was created by Chemical Vapor Deposition (CVD) growth process and may include post-growth treatment.
Type IIa



August 12, 2022	GI Report No. GS4201182
STONE	UNCONFIRMED RECT. MODIFIED
Weight	10.83 g, 7.97 x 4.09 mm
Color	Color Grade
Clarity	Clarity Grade
Depth	65.2%
Table	65.2%
Grade	Medium
Culet	Pointed
Polish	EXCELLENT
Symmetry	EXCELLENT
Fluorescence	NONE
Inscriptions (if any)	LARGEMOUNT 182 LS4221182
Comments:	This Laboratory Grown Diamond was created by Chemical Vapor Deposition (CVD) growth process and may include post-growth treatment.
Type IId	