



**INTERNATIONAL  
GEMOLOGICAL  
INSTITUTE**

**ELECTRONIC COPY**

**LABORATORY GROWN  
DIAMOND REPORT**

**IGI LABORATORY GROWN  
DIAMOND ID REPORT**

August 17, 2022  
IGI Report Number **LG542212271**

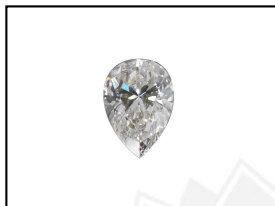
**LABORATORY GROWN DIAMOND REPORT**

**LG542212271**

**PEAR BRILLIANT**  
**6.58 X 4.34 X 2.88 MM**  
Carat Weight 0.50 CARAT  
Color Grade F  
Clarity Grade VS 2  
Polish VERY GOOD  
Symmetry EXCELLENT  
Fluorescence NONE  
Inscription(s) LABGROWN IGI  
LG542212271

**IGI LABORATORY GROWN DIAMOND IDENTIFICATION REPORT**

August 17, 2022  
IGI Report Number LG542212271  
Description LABORATORY GROWN DIAMOND  
Shape and Cutting Style PEAR BRILLIANT  
Measurements 6.58 X 4.34 X 2.88 MM



Comments: This Laboratory Grown Diamond was created by Chemical Vapor Deposition (CVD) growth process and may include post-growth treatment. Type Ila

**GRADING RESULTS**

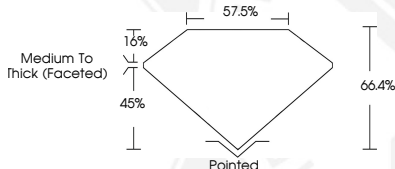
Carat Weight 0.50 CARAT  
Color Grade F  
Clarity Grade VS 2

**ADDITIONAL GRADING INFORMATION**

Polish VERY GOOD  
Symmetry EXCELLENT  
Fluorescence NONE  
Inscription(s) LABGROWN IGI LG542212271

Comments: This Laboratory Grown Diamond was created by Chemical Vapor Deposition (CVD) growth process and may include post-growth treatment. Type Ila

**LASERSCRIBE<sup>SM</sup>**  
Sample Images Used



**IGI LABORATORY GROWN  
DIAMOND ID REPORT**

August 17, 2022  
IGI Report Number **LG542212271**

**PEAR BRILLIANT**  
**6.58 X 4.34 X 2.88 MM**  
Carat Weight 0.50 CARAT  
Color Grade F  
Clarity Grade VS 2  
Polish VERY GOOD  
Symmetry EXCELLENT  
Fluorescence NONE  
Inscription(s) LABGROWN IGI  
LG542212271

Comments: This Laboratory Grown Diamond was created by Chemical Vapor Deposition (CVD) growth process and may include post-growth treatment. Type Ila

THIS DOCUMENT WAS PRODUCED WITH THE FOLLOWING SECURITY MEASURES: SPECIAL DOCUMENT PAPER, INK SCREENS, WATERMARK, BACKGROUND DESIGN, HOLOGRAM AND OTHER SECURITY FEATURES NOT LISTED AND DO EXCEED DOCUMENT SECURITY INDUSTRY GUIDELINES.

For terms & conditions and to verify this report, please visit [www.igi.org](http://www.igi.org)