



**ELECTRONIC COPY**

**LABORATORY GROWN DIAMOND REPORT**

August 17, 2022  
 IGI Report Number **LG542212626**  
 Description **LABORATORY GROWN  
DIAMOND**  
 Shape and Cutting Style **ROUND BRILLIANT**  
 Measurements **6.76 - 6.79 X 4.17 MM**

**GRADING RESULTS**

Carat Weight **1.17 CARAT**  
 Color Grade **D**  
 Clarity Grade **VVS 1**  
 Cut Grade **IDEAL**

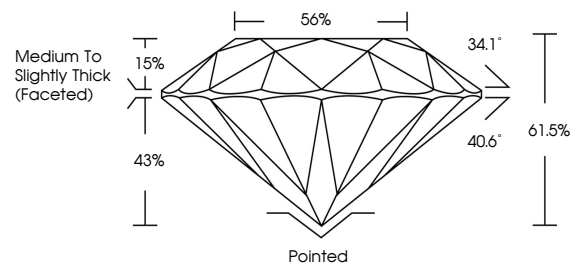
**ADDITIONAL GRADING INFORMATION**

Polish **EXCELLENT**  
 Symmetry **EXCELLENT**  
 Fluorescence **NONE**  
 Inscription(s) **LABGROWN IGI LG542212626**

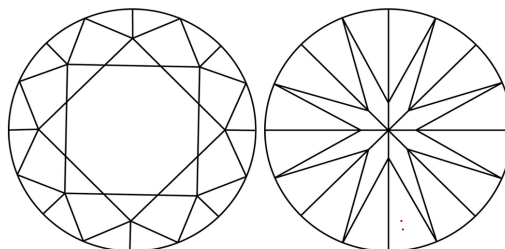
Comments: As Grown - No indication of post-growth treatment.  
 This Laboratory Grown Diamond was created by High Pressure High Temperature (HPHT) growth process.  
 Type II

LG542212626

**PROPORTIONS**



**CLARITY CHARACTERISTICS**



**KEY TO SYMBOLS**

Red symbols indicate internal characteristics.  
 Green symbols indicate external characteristics.

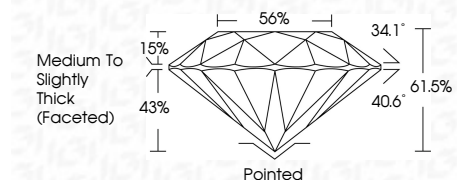
**GRADING SCALES**

| COLOR GRADING SCALE         | CL                                 | NC                                | FT                           | VLT                  | LT           |          |
|-----------------------------|------------------------------------|-----------------------------------|------------------------------|----------------------|--------------|----------|
|                             | COLORLESS<br>D-F                   | NEAR<br>COLORLESS<br>G-J          | FAINT<br>K-M                 | VERY LIGHT<br>N-R    | LIGHT<br>S-Z |          |
| CLARITY (10x) GRADING SCALE | FL                                 | IF                                | VVS                          | VS                   | SI           | I        |
|                             | FLAWLESS<br>INTERNALLY<br>FLAWLESS | VERY VERY<br>SLIGHTLY<br>INCLUDED | VERY<br>SLIGHTLY<br>INCLUDED | SLIGHTLY<br>INCLUDED |              | INCLUDED |

August 17, 2022  
 IGI Report Number **LG542212626**  
 Description **LABORATORY GROWN  
DIAMOND**  
 Shape and Cutting Style **ROUND BRILLIANT**  
 Measurements **6.76 - 6.79 X 4.17 MM**

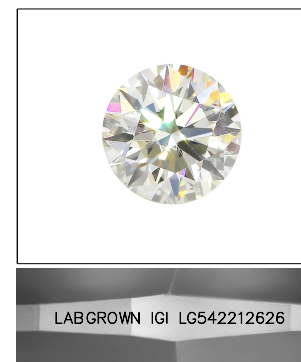
**GRADING RESULTS**

Carat Weight **1.17 CARAT**  
 Color Grade **D**  
 Clarity Grade **VVS 1**  
 Cut Grade **IDEAL**



**ADDITIONAL GRADING INFORMATION**

Polish **EXCELLENT**  
 Symmetry **EXCELLENT**  
 Fluorescence **NONE**  
 Inscription(s) **LABGROWN IGI LG542212626**  
 Comments: As Grown - No indication of post-growth treatment.  
 This Laboratory Grown Diamond was created by High Pressure High Temperature (HPHT) growth process.  
 Type II



**LASERSCRIBE<sup>SM</sup>**

Sample Image Used



**IGI**

August 17, 2022  
 IGI Report No **LG542212626**  
**ROUND BRILLIANT**  
 6.76 - 6.79 X 4.17 MM  
 Carat Weight **1.17 CARAT**  
 Color Grade **D**  
 Clarity Grade **VVS 1**  
 Cut Grade **IDEAL**  
 Depth **61.5%**  
 Table **56%**  
 Girdle **Medium To Slightly Thick (Faceted)**  
 Culet **Pointed**  
 Polish **EXCELLENT**  
 Symmetry **EXCELLENT**  
 Fluorescence **NONE**  
 Inscription(s) **LABGROWN IGI LG542212626**  
 Comments: **As Grown - No indication of post-growth treatment. This Laboratory Grown Diamond was created by High Pressure High Temperature (HPHT) growth process. Type II**