



**INTERNATIONAL  
GEMOLOGICAL  
INSTITUTE**

**ELECTRONIC COPY**

**LABORATORY GROWN  
DIAMOND REPORT**

**IGI LABORATORY GROWN  
DIAMOND ID REPORT**

September 8, 2022  
IGI Report Number **LG542226940**

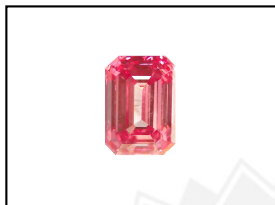
**LABORATORY GROWN DIAMOND REPORT**

**LG542226940**

**EMERALD CUT**  
**4.95 X 3.38 X 2.30 MM**  
Carat Weight 0.37 CARAT  
Color Grade FANCY VIVID  
PURPLE PINK  
Clarity Grade VS 1  
Polish EXCELLENT  
Symmetry GOOD  
Fluorescence SLIGHT  
Inscription(s) LABGROWN IGI  
LG542226940

**IGI LABORATORY GROWN DIAMOND IDENTIFICATION REPORT**

September 8, 2022  
IGI Report Number LG542226940  
Description LABORATORY GROWN DIAMOND  
Shape and Cutting Style EMERALD CUT  
Measurements 4.95 X 3.38 X 2.30 MM



LABGROWN IGI LG542226940

Comments: This Laboratory Grown Diamond was created by Chemical Vapor Deposition (CVD) growth process. Indications of post-growth treatment.

**GRADING RESULTS**

Carat Weight 0.37 CARAT  
Color Grade FANCY VIVID PURPLE PINK  
Clarity Grade VS 1

**LASERSCRIBE<sup>SM</sup>**  
Sample Images Used



**ADDITIONAL GRADING INFORMATION**

Polish EXCELLENT  
Symmetry GOOD  
Fluorescence SLIGHT  
Inscription(s) LABGROWN IGI LG542226940

**IGI LABORATORY GROWN  
DIAMOND ID REPORT**

September 8, 2022  
IGI Report Number **LG542226940**

Comments: This Laboratory Grown Diamond was created by Chemical Vapor Deposition (CVD) growth process. Indications of post-growth treatment.

**EMERALD CUT**  
**4.95 X 3.38 X 2.30 MM**  
Carat Weight 0.37 CARAT  
Color Grade FANCY VIVID  
PURPLE PINK  
Clarity Grade VS 1  
Polish EXCELLENT  
Symmetry GOOD  
Fluorescence SLIGHT  
Inscription(s) LABGROWN IGI  
LG542226940

Comments: This Laboratory Grown Diamond was created by Chemical Vapor Deposition (CVD) growth process. Indications of post-growth treatment.



THIS DOCUMENT WAS PRODUCED WITH THE FOLLOWING SECURITY MEASURES: SPECIAL DOCUMENT PAPER, INK SCREENS, WATERMARK, BACKGROUND DESIGN, HOLOGRAM AND OTHER SECURITY FEATURES NOT LISTED AND DO EXCEED DOCUMENT SECURITY INDUSTRY GUIDELINES.

For terms & conditions and to verify this report, please visit [www.igi.org](http://www.igi.org)