



**INTERNATIONAL  
GEMOLOGICAL  
INSTITUTE**

**ELECTRONIC COPY**

**LABORATORY GROWN  
DIAMOND REPORT**

**LG542227531**

**IGI LABORATORY GROWN  
DIAMOND ID REPORT**

September 8, 2022  
IGI Report Number **LG542227531**  
**CUSHION BRILLIANT**  
**5.53 X 4.08 X 2.65 MM**  
Carat Weight 0.56 CARAT  
Color Grade FANCY YELLOW  
Clarity Grade VS 1  
Polish VERY GOOD  
Symmetry VERY GOOD  
Fluorescence NONE  
Inscription(s) LABGROWN IGI  
LG542227531

Comments: As Grown - No indication of post-growth treatment.  
This Laboratory Grown Diamond was created by High Pressure High Temperature (HPHT) growth process.

**LABORATORY GROWN DIAMOND REPORT**

**IGI LABORATORY GROWN DIAMOND IDENTIFICATION REPORT**

September 8, 2022  
IGI Report Number LG542227531  
Description LABORATORY GROWN DIAMOND  
Shape and Cutting Style CUSHION BRILLIANT  
Measurements 5.53 X 4.08 X 2.65 MM

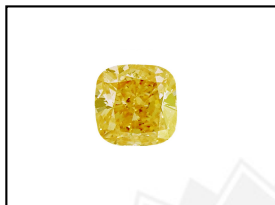
**GRADING RESULTS**

Carat Weight 0.56 CARAT  
Color Grade FANCY YELLOW  
Clarity Grade VS 1

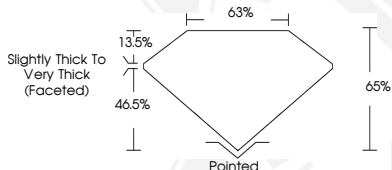
**ADDITIONAL GRADING INFORMATION**

Polish VERY GOOD  
Symmetry VERY GOOD  
Fluorescence NONE  
Inscription(s) LABGROWN IGI LG542227531

Comments: As Grown - No indication of post-growth treatment.  
This Laboratory Grown Diamond was created by High Pressure High Temperature (HPHT) growth process.



**LASERSCRIBE<sup>SM</sup>**  
Sample Images Used



**IGI LABORATORY GROWN  
DIAMOND ID REPORT**

September 8, 2022  
IGI Report Number **LG542227531**  
**CUSHION BRILLIANT**  
**5.53 X 4.08 X 2.65 MM**  
Carat Weight 0.56 CARAT  
Color Grade FANCY YELLOW  
Clarity Grade VS 1  
Polish VERY GOOD  
Symmetry VERY GOOD  
Fluorescence NONE  
Inscription(s) LABGROWN IGI  
LG542227531

Comments: As Grown - No indication of post-growth treatment.  
This Laboratory Grown Diamond was created by High Pressure High Temperature (HPHT) growth process.

THIS DOCUMENT WAS PRODUCED WITH THE FOLLOWING SECURITY MEASURES: SPECIAL DOCUMENT PAPER, INK SCREENS, WATERMARK, BACKGROUND DESIGN, HOLOGRAM AND OTHER SECURITY FEATURES NOT LISTED AND DO EXCEED DOCUMENT SECURITY INDUSTRY GUIDELINES.

For terms & conditions and to verify this report, please visit [www.igi.org](http://www.igi.org)