



**INTERNATIONAL
GEMOLOGICAL
INSTITUTE**

LABORATORY GROWN DIAMOND REPORT

IGI LABORATORY GROWN DIAMOND IDENTIFICATION REPORT

September 8, 2022
 IGI Report Number LG542227543
 Description LABORATORY GROWN DIAMOND
 Shape and Cutting Style CUSHION BRILLIANT
 Measurements 5.13 X 4.10 X 2.89 MM

GRADING RESULTS

Carat Weight 0.54 CARAT
 Color Grade FANCY YELLOW
 Clarity Grade VS 2

ADDITIONAL GRADING INFORMATION

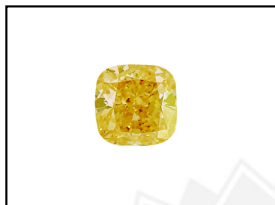
Polish GOOD
 Symmetry VERY GOOD
 Fluorescence NONE
 Inscription(s) LABGROWN IGI LG542227543

Comments: As Grown - No indication of post-growth treatment.
 This Laboratory Grown Diamond was created by High Pressure High Temperature (HPHT) growth process.

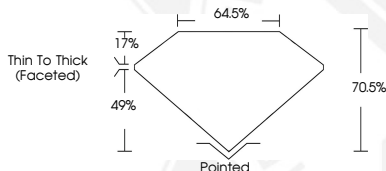
ELECTRONIC COPY

**LABORATORY GROWN
DIAMOND REPORT**

LG542227543



LASERSCRIBESM
Sample Images Used



**IGI LABORATORY GROWN
DIAMOND ID REPORT**

September 8, 2022
 IGI Report Number LG542227543
CUSHION BRILLIANT
5.13 X 4.10 X 2.89 MM
 Carat Weight 0.54 CARAT
 Color Grade FANCY YELLOW
 Clarity Grade VS 2
 Polish GOOD
 Symmetry VERY GOOD
 Fluorescence NONE
 Inscription(s) LABGROWN IGI
 LG542227543

Comments: As Grown - No indication of post-growth treatment.
 This Laboratory Grown Diamond was created by High Pressure High Temperature (HPHT) growth process.

**IGI LABORATORY GROWN
DIAMOND ID REPORT**

September 8, 2022
 IGI Report Number LG542227543
CUSHION BRILLIANT
5.13 X 4.10 X 2.89 MM
 Carat Weight 0.54 CARAT
 Color Grade FANCY YELLOW
 Clarity Grade VS 2
 Polish GOOD
 Symmetry VERY GOOD
 Fluorescence NONE
 Inscription(s) LABGROWN IGI
 LG542227543

Comments: As Grown - No indication of post-growth treatment.
 This Laboratory Grown Diamond was created by High Pressure High Temperature (HPHT) growth process.

THIS DOCUMENT WAS PRODUCED WITH THE FOLLOWING SECURITY MEASURES: SPECIAL DOCUMENT PAPER, INK SCREENS, WATERMARK, BACKGROUND DESIGN, HOLOGRAM AND OTHER SECURITY FEATURES NOT LISTED AND DO EXCEED DOCUMENT SECURITY INDUSTRY GUIDELINES.

For terms & conditions and to verify this report, please visit www.igi.org