



ELECTRONIC COPY

LABORATORY GROWN DIAMOND REPORT

| | |
|-------------------------|-----------------------------|
| August 16, 2022 | |
| IGI Report Number | LG542231925 |
| Description | LABORATORY GROWN DIAMOND |
| Shape and Cutting Style | ROUND BRILLIANT |
| Measurements | 8.05 - 8.09 X 5.01 MM |

GRADING RESULTS

| | |
|---------------|-------------|
| Carat Weight | 2.01 CARATS |
| Color Grade | F |
| Clarity Grade | VS 1 |
| Cut Grade | IDEAL |

ADDITIONAL GRADING INFORMATION

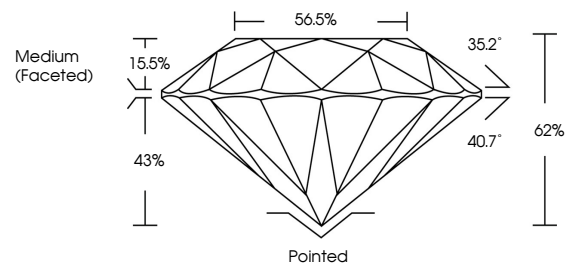
| | |
|--------------|-----------|
| Polish | EXCELLENT |
| Symmetry | EXCELLENT |
| Fluorescence | NONE |

Inscription(s) LABGROWN IGI LG542231925

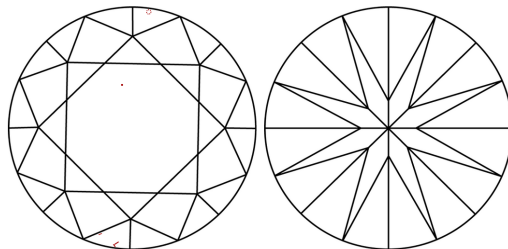
Comments: This Laboratory Grown Diamond was created by Chemical Vapor Deposition (CVD) growth process and may include post-growth treatment.
Type IIa

LG542231925

PROPORTIONS



CLARITY CHARACTERISTICS

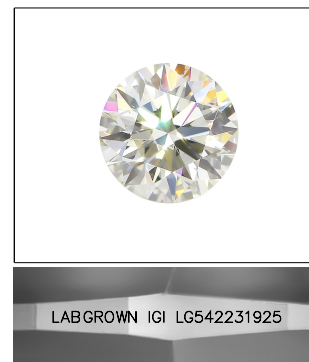


KEY TO SYMBOLS

Red symbols indicate internal characteristics.
Green symbols indicate external characteristics.

GRADING SCALES

| | | | | | | |
|-----------------------------|------------------------------|----|-----------------------------|------------------------|-------------------|-----------|
| COLOR GRADING SCALE | CL | | NC | FT | VLT | LT |
| | COLORLESS D-F | | NEAR COLORLESS G-J | FAINT K-M | VERY LIGHT N-R | LIGHT S-Z |
| CLARITY (10x) GRADING SCALE | FL | IF | VVS | VS | SI | I |
| | FLAWLESS INTERNALLY FLAWLESS | | VERY VERY SLIGHTLY INCLUDED | VERY SLIGHTLY INCLUDED | SLIGHTLY INCLUDED | INCLUDED |

LASERSCRIBESM

Sample Image Used



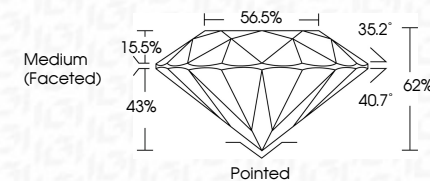
© IGI 2020, International Gemological Institute

FD - 10 20

www.igi.org

LABORATORY GROWN DIAMOND REPORT

| | |
|-------------------------|-----------------------------|
| August 16, 2022 | |
| IGI Report Number | LG542231925 |
| Description | LABORATORY GROWN DIAMOND |
| Shape and Cutting Style | ROUND BRILLIANT |
| Measurements | 8.05 - 8.09 X 5.01 MM |
| GRADING RESULTS | |
| Carat Weight | 2.01 CARATS |
| Color Grade | F |
| Clarity Grade | VS 1 |
| Cut Grade | IDEAL |



ADDITIONAL GRADING INFORMATION

| | |
|----------------|--------------------------|
| Polish | EXCELLENT |
| Symmetry | EXCELLENT |
| Fluorescence | NONE |
| Inscription(s) | LABGROWN IGI LG542231925 |

Comments: This Laboratory Grown Diamond was created by Chemical Vapor Deposition (CVD) growth process and may include post-growth treatment.
Type IIa



| | | | | | | | |
|---------------------------|------------------------|-------------|-------|------------------|--------------|-----------|--------------|
| August 16, 2022 | Report No. LGS42231925 | 2.01 CARATS | VSI 1 | Painted | Fluorescence | NONE | LARGOVAN 151 |
| GI Report No. LGS42231925 | ROUND BRILLIANT | F | IDEAL | EXCELLENT | Symmetry | EXCELLENT | LGS42231925 |
| 0.05 - 0.09 X 5.01 MM | Carat Weight | | 62% | 56.5% | | | |
| | Color Grade | | | Medium (Faceted) | | | |
| | Clarity Grade | | | | | | |
| | Cut Grade | | | | | | |
| | Depth | | | | | | |
| | Table | | | | | | |
| | Girdle | | | | | | |
| | Culet | | | | | | |
| | Polish | | | | | | |
| | Symmetry | | | | | | |
| | Fluorescence | | | | | | |
| | Inscriptions | | | | | | |
| | Comments: | | | | | | |

This Laboratory Grown Diamond was created by Chemical Vapor Deposition (CVD) growth process and may include some growth treatment.

Type Ia