



**INTERNATIONAL  
GEMOLOGICAL  
INSTITUTE**

**LABORATORY GROWN DIAMOND REPORT**

**IGI LABORATORY GROWN DIAMOND IDENTIFICATION REPORT**

August 17, 2022  
 IGI Report Number **LG542233257**  
 Description **LABORATORY GROWN DIAMOND**  
 Shape and Cutting Style **ROUND BRILLIANT**  
 Measurements **4.46 - 4.49 X 2.75 MM**

**GRADING RESULTS**

Carat Weight **0.34 CARAT**  
 Color Grade **H**  
 Clarity Grade **VS 2**  
 Cut Grade **IDEAL**

**ADDITIONAL GRADING INFORMATION**

Polish **EXCELLENT**  
 Symmetry **EXCELLENT**  
 Fluorescence **NONE**  
 Inscription(s) **LABGROWN IGI LG542233257**

Comments: This Laboratory Grown Diamond was created by Chemical Vapor Deposition (CVD) growth process and may include post-growth treatment.  
 Type IIa

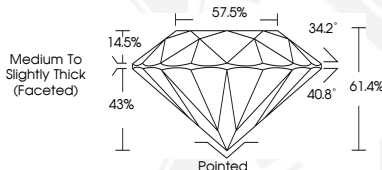
**ELECTRONIC COPY**

**LABORATORY GROWN  
DIAMOND REPORT**

**LG542233257**



**LASERSCRIBE<sup>SM</sup>**  
Sample Images Used



**IGI LABORATORY GROWN  
DIAMOND ID REPORT**

August 17, 2022  
 IGI Report Number **LG542233257**  
**ROUND BRILLIANT**  
**4.46 - 4.49 X 2.75 MM**  
 Carat Weight **0.34 CARAT**  
 Color Grade **H**  
 Clarity Grade **VS 2**  
 Cut Grade **IDEAL**  
 Polish **EXCELLENT**  
 Symmetry **EXCELLENT**  
 Fluorescence **NONE**  
 Inscription(s) **LABGROWN IGI  
LG542233257**

Comments: This Laboratory Grown Diamond was created by Chemical Vapor Deposition (CVD) growth process and may include post-growth treatment.  
 Type IIa

**IGI LABORATORY GROWN  
DIAMOND ID REPORT**

August 17, 2022  
 IGI Report Number **LG542233257**  
**ROUND BRILLIANT**  
**4.46 - 4.49 X 2.75 MM**  
 Carat Weight **0.34 CARAT**  
 Color Grade **H**  
 Clarity Grade **VS 2**  
 Cut Grade **IDEAL**  
 Polish **EXCELLENT**  
 Symmetry **EXCELLENT**  
 Fluorescence **NONE**  
 Inscription(s) **LABGROWN IGI  
LG542233257**

Comments: This Laboratory Grown Diamond was created by Chemical Vapor Deposition (CVD) growth process and may include post-growth treatment.  
 Type IIa

THIS DOCUMENT WAS PRODUCED WITH THE FOLLOWING SECURITY MEASURES: SPECIAL DOCUMENT PAPER, INK SCREENS, WATERMARK, BACKGROUND DESIGN, HOLOGRAM AND OTHER SECURITY FEATURES NOT LISTED AND DO EXCEED DOCUMENT SECURITY INDUSTRY GUIDELINES.

For terms & conditions and to verify this report, please visit [www.igi.org](http://www.igi.org)