



**INTERNATIONAL
GEMOLOGICAL
INSTITUTE**

ELECTRONIC COPY

**LABORATORY GROWN
DIAMOND REPORT**

**IGI LABORATORY GROWN
DIAMOND ID REPORT**

August 16, 2022
IGI Report Number **LG542233304**
PEAR BRILLIANT
5.71 X 3.71 X 2.41 MM
Carat Weight 0.30 CARAT
Color Grade G
Clarity Grade VS 2
Polish EXCELLENT
Symmetry VERY GOOD
Fluorescence NONE
Inscription(s) LABGROWN IGI
LG542233304

Comments: This Laboratory Grown Diamond was created by Chemical Vapor Deposition (CVD) growth process and may include post-growth treatment.
Type IIa

LABORATORY GROWN DIAMOND REPORT

IGI LABORATORY GROWN DIAMOND IDENTIFICATION REPORT

August 16, 2022
IGI Report Number LG542233304
Description LABORATORY GROWN DIAMOND
Shape and Cutting Style PEAR BRILLIANT
Measurements 5.71 X 3.71 X 2.41 MM

GRADING RESULTS

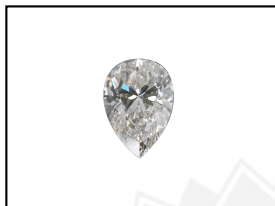
Carat Weight 0.30 CARAT
Color Grade G
Clarity Grade VS 2

ADDITIONAL GRADING INFORMATION

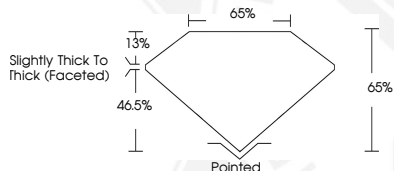
Polish EXCELLENT
Symmetry VERY GOOD
Fluorescence NONE
Inscription(s) LABGROWN IGI LG542233304

Comments: This Laboratory Grown Diamond was created by Chemical Vapor Deposition (CVD) growth process and may include post-growth treatment.
Type IIa

LG542233304



LASERSCRIBESM
Sample Images Used



**IGI LABORATORY GROWN
DIAMOND ID REPORT**

August 16, 2022
IGI Report Number **LG542233304**
PEAR BRILLIANT
5.71 X 3.71 X 2.41 MM
Carat Weight 0.30 CARAT
Color Grade G
Clarity Grade VS 2
Polish EXCELLENT
Symmetry VERY GOOD
Fluorescence NONE
Inscription(s) LABGROWN IGI
LG542233304

Comments: This Laboratory Grown Diamond was created by Chemical Vapor Deposition (CVD) growth process and may include post-growth treatment.
Type IIa

THIS DOCUMENT WAS PRODUCED WITH THE FOLLOWING SECURITY MEASURES: SPECIAL DOCUMENT PAPER, INK SCREENS, WATERMARK, BACKGROUND DESIGN, HOLOGRAM AND OTHER SECURITY FEATURES NOT LISTED AND DO EXCEED DOCUMENT SECURITY INDUSTRY GUIDELINES.

For terms & conditions and to verify this report, please visit www.igi.org