



ELECTRONIC COPY

LABORATORY GROWN DIAMOND REPORT

August 16, 2022
IGI Report Number LG542235078
Description LABORATORY GROWN DIAMOND
Shape and Cutting Style ROUND BRILLIANT
Measurements 9.22 - 9.28 X 5.74 MM

GRADING RESULTS

Carat Weight 3.05 CARATS
Color Grade F
Clarity Grade SI 1
Cut Grade IDEAL

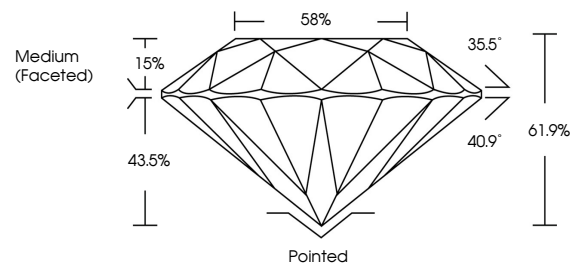
ADDITIONAL GRADING INFORMATION

Polish EXCELLENT
Symmetry EXCELLENT
Fluorescence NONE
Inscription(s) LABGROWN IGI LG542235078

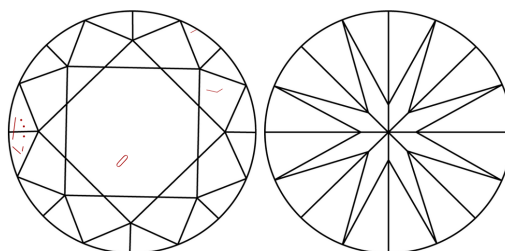
Comments: As Grown - No indication of post-growth treatment. This Laboratory Grown Diamond was created by High Pressure High Temperature (HPHT) growth process. Type II

LG542235078

PROPORTIONS



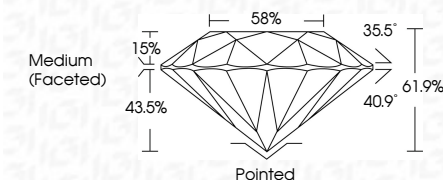
CLARITY CHARACTERISTICS



KEY TO SYMBOLS

Red symbols indicate internal characteristics. Green symbols indicate external characteristics.

August 16, 2022
IGI Report Number LG542235078
Description LABORATORY GROWN DIAMOND
Shape and Cutting Style ROUND BRILLIANT
Measurements 9.22 - 9.28 X 5.74 MM
GRADING RESULTS
Carat Weight 3.05 CARATS
Color Grade F
Clarity Grade SI 1
Cut Grade IDEAL

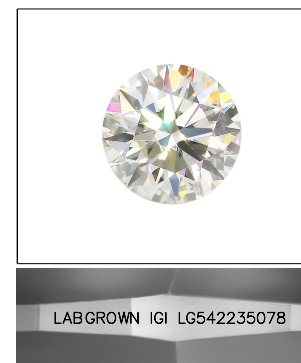


ADDITIONAL GRADING INFORMATION

Polish EXCELLENT
Symmetry EXCELLENT
Fluorescence NONE
Inscription(s) LABGROWN IGI LG542235078
Comments: As Grown - No indication of post-growth treatment. This Laboratory Grown Diamond was created by High Pressure High Temperature (HPHT) growth process. Type II

GRADING SCALES

Table with 2 rows: COLOR GRADING SCALE (CL, NC, FT, VLT, LT) and CLARITY (10x) GRADING SCALE (FL, IF, VVS, VS, SI, I).



LASERSCRIBE SM Sample Image Used



August 16, 2022
IGI Report No LG542235078
ROUND BRILLIANT
9.22 - 9.28 X 5.74 MM
3.05 CARATS
Color Grade F
Clarity Grade SI 1
Cut Grade IDEAL
Depth 61.9%
Table 58%
Medium (Faceted)
Culet Pointed
Polish EXCELLENT
Symmetry EXCELLENT
Fluorescence NONE
Inscription(s) LABGROWN IGI LG542235078
Comments: As Grown - No indication of post-growth treatment. This Laboratory Grown Diamond was created by High Pressure High Temperature (HPHT) growth process. Type II