



**ELECTRONIC COPY**

## LABORATORY GROWN DIAMOND REPORT

|                         |                             |
|-------------------------|-----------------------------|
| August 22, 2022         |                             |
| IGI Report Number       | LG544241539                 |
| Description             | LABORATORY GROWN<br>DIAMOND |
| Shape and Cutting Style | ROUND BRILLIANT             |
| Measurements            | 9.29 - 9.34 X 5.73 MM       |

## GRADING RESULTS

|               |             |
|---------------|-------------|
| Carat Weight  | 3.07 CARATS |
| Color Grade   | G           |
| Clarity Grade | VVS 2       |
| Cut Grade     | IDEAL       |

### ADDITIONAL GRADING INFORMATION

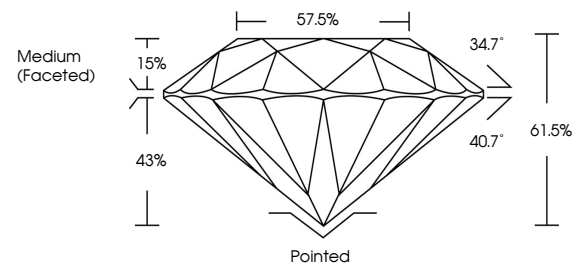
|              |           |
|--------------|-----------|
| Polish       | EXCELLENT |
| Symmetry     | EXCELLENT |
| Fluorescence | NONE      |

Inscription(s) LABGROWN IGI LG544241539

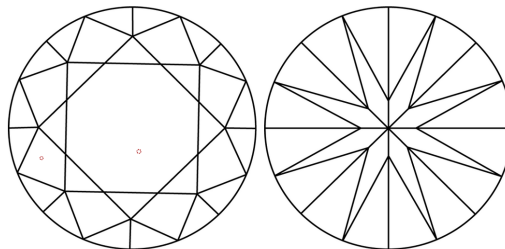
Comments: This Laboratory Grown Diamond was created by Chemical Vapor Deposition (CVD) growth process and may include post-growth treatment.  
Type IIa

LG544241539

## PROPORTIONS



## CLARITY CHARACTERISTICS

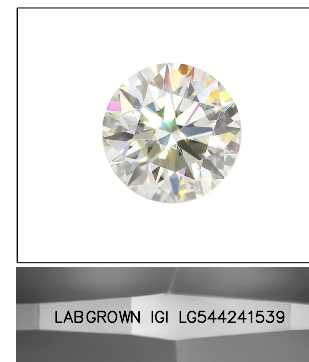


### KEY TO SYMBOLS

Red symbols indicate internal characteristics.  
Green symbols indicate external characteristics.

## GRADING SCALES

|                             |                              |  |                             |  |                        |  |                   |  |           |  |
|-----------------------------|------------------------------|--|-----------------------------|--|------------------------|--|-------------------|--|-----------|--|
| COLOR GRADING SCALE         | CL                           |  | NC                          |  | FT                     |  | VLT               |  | LT        |  |
|                             | COLORLESS D-F                |  | NEAR COLORLESS G-J          |  | FAINT K-M              |  | VERY LIGHT N-R    |  | LIGHT S-Z |  |
| CLARITY (10x) GRADING SCALE | FL IF                        |  | VVS                         |  | VS                     |  | SI                |  | I         |  |
|                             | FLAWLESS INTERNALLY FLAWLESS |  | VERY VERY SLIGHTLY INCLUDED |  | VERY SLIGHTLY INCLUDED |  | SLIGHTLY INCLUDED |  | INCLUDED  |  |

LASERSCRIBE<sup>SM</sup>

Sample Image Used



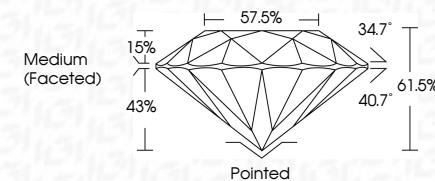
© IGI 2020, International Gemological Institute

FD - 10 20

**www.igi.org**

## LABORATORY GROWN DIAMOND REPORT

|                         |                             |
|-------------------------|-----------------------------|
| August 22, 2022         |                             |
| IGI Report Number       | LG544241539                 |
| Description             | LABORATORY GROWN<br>DIAMOND |
| Shape and Cutting Style | ROUND BRILLIANT             |
| Measurements            | 9.29 - 9.34 X 5.73 MM       |
| <b>GRADING RESULTS</b>  |                             |
| Carat Weight            | 3.07 CARATS                 |
| Color Grade             | G                           |
| Clarity Grade           | VVS 2                       |
| Cut Grade               | IDEAL                       |



### ADDITIONAL GRADING INFORMATION

|                |                          |
|----------------|--------------------------|
| Polish         | EXCELLENT                |
| Symmetry       | EXCELLENT                |
| Fluorescence   | NONE                     |
| Inscription(s) | LABGROWN IGI LG544241539 |

Inscription(s) LABGROWN IGI LG544241539

Comments: This Laboratory Grown Diamond was created by Chemical Vapor Deposition (CVD) growth process and may include post-growth treatment.  
Type IIa



|                 |                          |                  |   |
|-----------------|--------------------------|------------------|---|
| August 22, 2022 | GI Report No. LGS4241539 | 3.07 CARATS      | Polished  |
| Color Grade     | Clarity Grade            | WVS 2            | EXCELLENT   |
| Carat Weight    | Cut Grade                | IDEAL            | EXCELLENT   |
| 9.34 X 5.73 MM  | Depth                    | 61.9%            | NONE  |
|                 | Table                    | 57.5%            | LABGROWN VS<br>LGS4241539   |
|                 | Girdle                   | Medium (Faceted) |   |
|                 | Culet                    |                  |   |
|                 | Polish                   |                  |   |
|                 | Symmetry                 |                  |   |
|                 | Fluorescence             |                  |   |
|                 | Inscriptions             |                  |   |
|                 | Comments:                |                  |   |
|                 |                          |                  | This Laboratory Grown Diamond was created by Chemical Vapor Deposition (CVD) growth process and may include natural inclusions and may require treatment. |
|                 |                          |                  | Type IIA  |