



**INTERNATIONAL
GEMOLOGICAL
INSTITUTE**

ELECTRONIC COPY

**LABORATORY GROWN
DIAMOND REPORT**

**IGI LABORATORY GROWN
DIAMOND ID REPORT**

September 5, 2022

IGI Report Number **LG544245813**

ROUND BRILLIANT

6.01 - 6.06 X 3.75 MM

Carat Weight	0.82 CARAT
Color Grade	I
Clarity Grade	VVS 1
Cut Grade	EXCELLENT
Polish	EXCELLENT
Symmetry	EXCELLENT
Fluorescence	NONE
Inscription(s)	LABGROWN IGI LG544245813

Comments: This Laboratory Grown Diamond was created by Chemical Vapor Deposition (CVD) growth process and may include post-growth treatment. Type IIa

LABORATORY GROWN DIAMOND REPORT

IGI LABORATORY GROWN DIAMOND IDENTIFICATION REPORT

September 5, 2022

IGI Report Number **LG544245813**

Description **LABORATORY GROWN DIAMOND**

Shape and Cutting Style **ROUND BRILLIANT**

Measurements **6.01 - 6.06 X 3.75 MM**

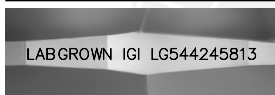
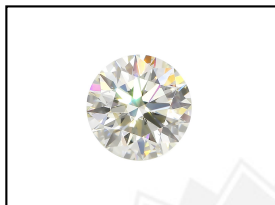
GRADING RESULTS

Carat Weight	0.82 CARAT
Color Grade	I
Clarity Grade	VVS 1
Cut Grade	EXCELLENT

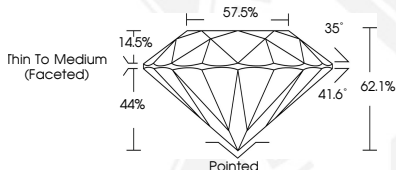
ADDITIONAL GRADING INFORMATION

Polish	EXCELLENT
Symmetry	EXCELLENT
Fluorescence	NONE
Inscription(s)	LABGROWN IGI LG544245813

Comments: This Laboratory Grown Diamond was created by Chemical Vapor Deposition (CVD) growth process and may include post-growth treatment. Type IIa



LASERSCRIBESM
Sample Images Used



THIS DOCUMENT WAS PRODUCED WITH THE FOLLOWING SECURITY MEASURES: SPECIAL DOCUMENT PAPER, INK SCREENS, WATERMARK, BACKGROUND DESIGN, HOLOGRAM AND OTHER SECURITY FEATURES NOT LISTED AND DO EXCEED DOCUMENT SECURITY INDUSTRY GUIDELINES.

For terms & conditions and to verify this report, please visit www.igi.org

**IGI LABORATORY GROWN
DIAMOND ID REPORT**

September 5, 2022

IGI Report Number **LG544245813**

ROUND BRILLIANT

6.01 - 6.06 X 3.75 MM

Carat Weight	0.82 CARAT
Color Grade	I
Clarity Grade	VVS 1
Cut Grade	EXCELLENT
Polish	EXCELLENT
Symmetry	EXCELLENT
Fluorescence	NONE
Inscription(s)	LABGROWN IGI LG544245813

Comments: This Laboratory Grown Diamond was created by Chemical Vapor Deposition (CVD) growth process and may include post-growth treatment. Type IIa