



ELECTRONIC COPY

LABORATORY GROWN DIAMOND REPORT

October 14, 2022
IGI Report Number LG544247717
Description LABORATORY GROWN DIAMOND
Shape and Cutting Style ROUND BRILLIANT
Measurements 7.48 - 7.53 X 4.75 MM

GRADING RESULTS

Carat Weight 1.67 CARAT
Color Grade I
Clarity Grade SI 2
Cut Grade EXCELLENT

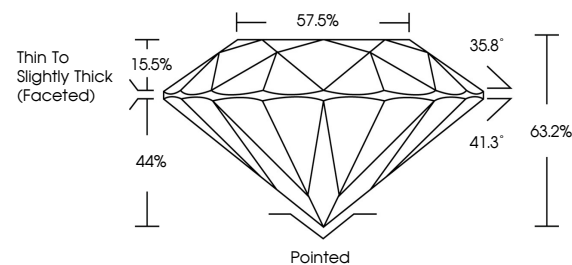
ADDITIONAL GRADING INFORMATION

Polish EXCELLENT
Symmetry VERY GOOD
Fluorescence NONE
Inscription(s) LABGROWN (IGI) LG544247717

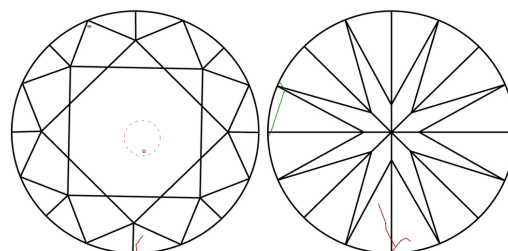
Comments: This Laboratory Grown Diamond was created by Chemical Vapor Deposition (CVD) growth process and may include post-growth treatment. Type IIa

LG544247717

PROPORTIONS



CLARITY CHARACTERISTICS



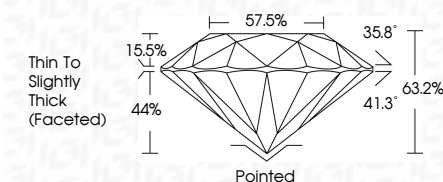
KEY TO SYMBOLS

Red symbols indicate internal characteristics.
Green symbols indicate external characteristics.

GRADING SCALES

Table with 2 rows and 5 columns showing color grading scales (CL, NC, FT, VLT, LT) and clarity grading scales (FL, IF, VVS, VS, SI, I).

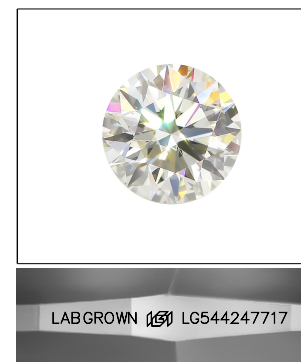
October 14, 2022
IGI Report Number LG544247717
Description LABORATORY GROWN DIAMOND
Shape and Cutting Style ROUND BRILLIANT
Measurements 7.48 - 7.53 X 4.75 MM
GRADING RESULTS
Carat Weight 1.67 CARAT
Color Grade I
Clarity Grade SI 2
Cut Grade EXCELLENT



ADDITIONAL GRADING INFORMATION

Polish EXCELLENT
Symmetry VERY GOOD
Fluorescence NONE
Inscription(s) LABGROWN (IGI) LG544247717

Comments: This Laboratory Grown Diamond was created by Chemical Vapor Deposition (CVD) growth process and may include post-growth treatment. Type IIa



LASERSCRIBE SM
Sample Image Used



October 14, 2022
IGI Report No LG544247717
ROUND BRILLIANT
7.48 - 7.53 X 4.75 MM
Carat Weight 1.67 CARAT
Color Grade I
Clarity Grade SI 2
Cut Grade EXCELLENT
Depth 63.2%
Table 57.5%
Girdle Thin to Slightly Thick (Faceted)
Culet Pointed
Polish EXCELLENT
Symmetry VERY GOOD
Fluorescence NONE
Inscription(s) LABGROWN (IGI) LG544247717
Comments: This Laboratory Grown Diamond was created by Chemical Vapor Deposition (CVD) growth process and may include post-growth treatment. Type IIa