



**INTERNATIONAL  
GEMOLOGICAL  
INSTITUTE**

**LABORATORY GROWN DIAMOND REPORT**

**IGI LABORATORY GROWN DIAMOND IDENTIFICATION REPORT**

August 27, 2022  
 IGI Report Number LG544252151  
 Description LABORATORY GROWN DIAMOND  
 Shape and Cutting Style ROUND BRILLIANT  
 Measurements 6.34 - 6.37 X 3.96 MM

**GRADING RESULTS**

Carat Weight 0.95 CARAT  
 Color Grade E  
 Clarity Grade VS 1  
 Cut Grade VERY GOOD

**ADDITIONAL GRADING INFORMATION**

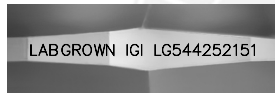
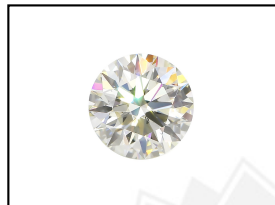
Polish EXCELLENT  
 Symmetry EXCELLENT  
 Fluorescence NONE  
 Inscription(s) LABGROWN IGI LG544252151

Comments: This Laboratory Grown Diamond was created by Chemical Vapor Deposition (CVD) growth process and may include post-growth treatment.  
 Type IIa

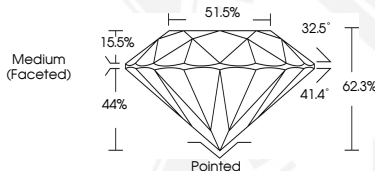
**ELECTRONIC COPY**

**LABORATORY GROWN  
DIAMOND REPORT**

**LG544252151**



**LASERSCRIBE<sup>SM</sup>**  
Sample Images Used



**IGI LABORATORY GROWN  
DIAMOND ID REPORT**

August 27, 2022  
 IGI Report Number **LG544252151**  
**ROUND BRILLIANT**  
**6.34 - 6.37 X 3.96 MM**  
 Carat Weight 0.95 CARAT  
 Color Grade E  
 Clarity Grade VS 1  
 Cut Grade VERY GOOD  
 Polish EXCELLENT  
 Symmetry EXCELLENT  
 Fluorescence NONE  
 Inscription(s) LABGROWN IGI  
 LG544252151

Comments: This Laboratory Grown Diamond was created by Chemical Vapor Deposition (CVD) growth process and may include post-growth treatment.  
 Type IIa

**IGI LABORATORY GROWN  
DIAMOND ID REPORT**

August 27, 2022  
 IGI Report Number **LG544252151**  
**ROUND BRILLIANT**  
**6.34 - 6.37 X 3.96 MM**  
 Carat Weight 0.95 CARAT  
 Color Grade E  
 Clarity Grade VS 1  
 Cut Grade VERY GOOD  
 Polish EXCELLENT  
 Symmetry EXCELLENT  
 Fluorescence NONE  
 Inscription(s) LABGROWN IGI  
 LG544252151

Comments: This Laboratory Grown Diamond was created by Chemical Vapor Deposition (CVD) growth process and may include post-growth treatment.  
 Type IIa

THIS DOCUMENT WAS PRODUCED WITH THE FOLLOWING SECURITY MEASURES: SPECIAL DOCUMENT PAPER, INK SCREENS, WATERMARK, BACKGROUND DESIGN, HOLOGRAM AND OTHER SECURITY FEATURES NOT LISTED AND DO EXCEED DOCUMENT SECURITY INDUSTRY GUIDELINES.

For terms & conditions and to verify this report, please visit [www.igi.org](http://www.igi.org)