



**INTERNATIONAL
GEMOLOGICAL
INSTITUTE**

ELECTRONIC COPY

**LABORATORY GROWN
DIAMOND REPORT**

**IGI LABORATORY GROWN
DIAMOND ID REPORT**

August 25, 2022
IGI Report Number **LG544252235**
PEAR BRILLIANT
5.98 X 3.50 X 2.33 MM
Carat Weight 0.30 CARAT
Color Grade F
Clarity Grade VS 1
Polish EXCELLENT
Symmetry GOOD
Fluorescence NONE
Inscription(s) LABGROWN IGI
LG544252235

LABORATORY GROWN DIAMOND REPORT

IGI LABORATORY GROWN DIAMOND IDENTIFICATION REPORT

August 25, 2022
IGI Report Number LG544252235
Description LABORATORY GROWN DIAMOND
Shape and Cutting Style PEAR BRILLIANT
Measurements 5.98 X 3.50 X 2.33 MM

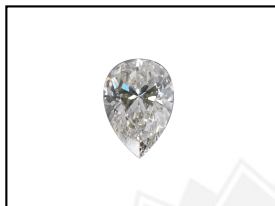
GRADING RESULTS

Carat Weight 0.30 CARAT
Color Grade F
Clarity Grade VS 1

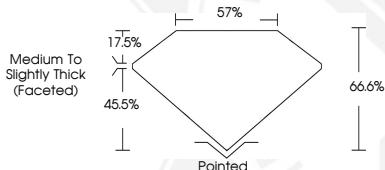
ADDITIONAL GRADING INFORMATION

Polish EXCELLENT
Symmetry GOOD
Fluorescence NONE
Inscription(s) LABGROWN IGI LG544252235

Comments: This Laboratory Grown Diamond was created by Chemical Vapor Deposition (CVD) growth process and may include post-growth treatment.
Type IIa



LASERSCRIBESM
Sample Images Used



Comments: This Laboratory Grown Diamond was created by Chemical Vapor Deposition (CVD) growth process and may include post-growth treatment.
Type IIa

**IGI LABORATORY GROWN
DIAMOND ID REPORT**

August 25, 2022
IGI Report Number **LG544252235**
PEAR BRILLIANT
5.98 X 3.50 X 2.33 MM
Carat Weight 0.30 CARAT
Color Grade F
Clarity Grade VS 1
Polish EXCELLENT
Symmetry GOOD
Fluorescence NONE
Inscription(s) LABGROWN IGI
LG544252235

Comments: This Laboratory Grown Diamond was created by Chemical Vapor Deposition (CVD) growth process and may include post-growth treatment.
Type IIa

THIS DOCUMENT WAS PRODUCED WITH THE FOLLOWING SECURITY MEASURES: SPECIAL DOCUMENT PAPER, INK SCREENS, WATERMARK, BACKGROUND DESIGN, HOLOGRAM AND OTHER SECURITY FEATURES NOT LISTED AND DO EXCEED DOCUMENT SECURITY INDUSTRY GUIDELINES.

For terms & conditions and to verify this report, please visit www.igi.org