



**INTERNATIONAL  
GEMOLOGICAL  
INSTITUTE**

**ELECTRONIC COPY**

**LABORATORY GROWN  
DIAMOND REPORT**

**IGI LABORATORY GROWN  
DIAMOND ID REPORT**

August 26, 2022  
IGI Report Number **LG544263722**

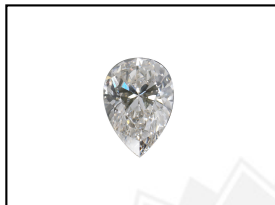
**LABORATORY GROWN DIAMOND REPORT**

**LG544263722**

**PEAR BRILLIANT**  
**5.97 X 3.71 X 2.41 MM**  
Carat Weight 0.31 CARAT  
Color Grade F  
Clarity Grade VS 1  
Polish EXCELLENT  
Symmetry VERY GOOD  
Fluorescence NONE  
Inscription(s) LABGROWN IGI  
LG544263722

**IGI LABORATORY GROWN DIAMOND IDENTIFICATION REPORT**

August 26, 2022  
IGI Report Number LG544263722  
Description LABORATORY GROWN DIAMOND  
Shape and Cutting Style PEAR BRILLIANT  
Measurements 5.97 X 3.71 X 2.41 MM



Comments: This Laboratory Grown Diamond was created by Chemical Vapor Deposition (CVD) growth process and may include post-growth treatment. Type Ila

**GRADING RESULTS**

Carat Weight 0.31 CARAT  
Color Grade F  
Clarity Grade VS 1

**LASERSCRIBE<sup>SM</sup>**  
Sample Images Used

**ADDITIONAL GRADING INFORMATION**

Polish EXCELLENT  
Symmetry VERY GOOD  
Fluorescence NONE  
Inscription(s) LABGROWN IGI LG544263722



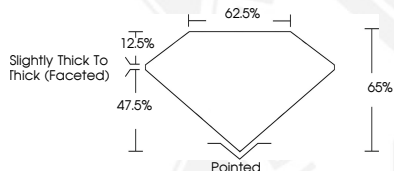
**IGI LABORATORY GROWN  
DIAMOND ID REPORT**

August 26, 2022  
IGI Report Number **LG544263722**

Comments: This Laboratory Grown Diamond was created by Chemical Vapor Deposition (CVD) growth process and may include post-growth treatment. Type Ila

**PEAR BRILLIANT**  
**5.97 X 3.71 X 2.41 MM**  
Carat Weight 0.31 CARAT  
Color Grade F  
Clarity Grade VS 1  
Polish EXCELLENT  
Symmetry VERY GOOD  
Fluorescence NONE  
Inscription(s) LABGROWN IGI  
LG544263722

Comments: This Laboratory Grown Diamond was created by Chemical Vapor Deposition (CVD) growth process and may include post-growth treatment. Type Ila



THIS DOCUMENT WAS PRODUCED WITH THE FOLLOWING SECURITY MEASURES: SPECIAL DOCUMENT PAPER, INK SCREENS, WATERMARK, BACKGROUND DESIGN, HOLOGRAM AND OTHER SECURITY FEATURES NOT LISTED AND DO EXCEED DOCUMENT SECURITY INDUSTRY GUIDELINES.

For terms & conditions and to verify this report, please visit [www.igi.org](http://www.igi.org)