



ELECTRONIC COPY

LABORATORY GROWN DIAMOND REPORT

Description	LABORATORY GROWN DIAMOND
Shape and Cutting Style	PRINCESS CUT
Measurements	8.67 X 8.61 X 5.73 MM

GRADING RESULTS

Carat Weight	3.92 CARATS
Color Grade	I
Clarity Grade	VS 2

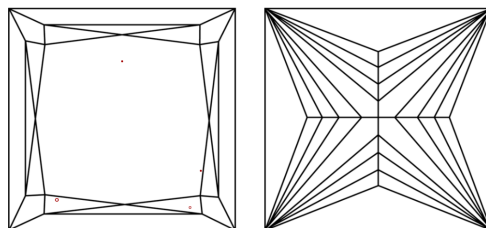
ADDITIONAL GRADING INFORMATION

Polish	EXCELLENT
Symmetry	EXCELLENT
Fluorescence	NONE
Inscription(s)	LABGROWN IGI LG544271629
Comments: This Laboratory Grown Diamond was created by Chemical Vapor Deposition (CVD) growth process and may include post-growth treatment.	
Type IIa	

Diagram illustrating the proportions of a hexagonal cross-section (likely a bolt head or nut) with the following dimensions and labels:

- Top Width:** 67%
- Left Side:** 12% (labeled "Thinly Thick") and 51% (labeled "Thick")
- Right Side:** 66.6%
- Bottom:** Pointed

CLARITY CHARACTERISTICS

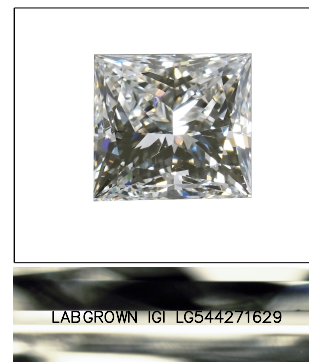


KEY TO SYMBOLS

Red symbols indicate internal characteristics.
Green symbols indicate external characteristics.

GRADING SCALES

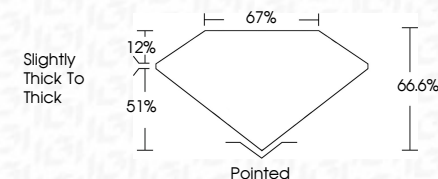
COLOR GRADING SCALE	CL		NC		FT		VLT		LT	
	COLORLESS D-F		NEAR COLORLESS G-J		FAINT K-M		VERY LIGHT N-R		LIGHT S-Z	
CLARITY (10x) GRADING SCALE	FL	IF	VVS		VS		SI		I	
	FLAWLESS INTERNALLY FLAWLESS		VERY VERY SLIGHTLY INCLUDED		VERY SLIGHTLY INCLUDED		SLIGHTLY INCLUDED		INCLUDED	

LASERSCRIBESM

Sample Image Used



August 30, 2022	
IGI Report Number	LG544271629
Description	LABORATORY GROWN DIAMOND
Shape and Cutting Style	PRINCESS CUT
Measurements	8.67 X 8.61 X 5.73 MM
GRADING RESULTS	
Carat Weight	3.92 CARATS
Color Grade	I
Clarity Grade	VS 2



ADDITIONAL GRADING INFORMATION

Polish	EXCELLENT
Symmetry	EXCELLENT
Fluorescence	NONE
Inscription(s)	LABGROWN IGI LG544271629

Comments: This Laboratory Grown Diamond was created by Chemical Vapor Deposition (CVD) growth process and may include post-growth treatment. Type IIa



© IGI 2020, International Gemological Institute

FD - 10 20



THIS DOCUMENT WAS PRODUCED WITH THE FOLLOWING SECURITY MEASURES: SPECIAL DOCUMENT PAPER, INK SCREENS, WATERMARK, BACKGROUND DESIGNS, HOLOGRAM AND OTHER SECURITY FEATURES NOT LISTED AND DO EXCEED DOCUMENT SECURITY INDUSTRY GUIDELINES

August 30, 2022	Report No. LG544271629	3.92 CARATS	Pointed
PRINCESS CUT		VS 2	EXCELLENT
6.07 X 6.61 X 0.73 MM		66.6%	EXCELLENT
		67%	NONE
		Slightly Thick to Thick	LABGROWN (G1 LG544271629)
Color	Clarity	Culet	Comments: This Laboratory Grown Diamond was certified by the International Gem (IGI) growth process and may include post-growth treatment. Type Ila
Color Grade	Clarity Grade	Polish	
Depth	Table	Symmetry	
Girdle	Girdle	Fluorescence Description(s)	

www.igi.org