



**ELECTRONIC COPY**

## LABORATORY GROWN DIAMOND REPORT

September 2, 2022	
IGI Report Number	LG544273633
Description	LABORATORY GROWN DIAMOND
Shape and Cutting Style	CUT CORNERED RECTANGULAR MODIFIED BRILLIANT
Measurements	8.01 X 5.37 X 3.51 MM

## GRADING RESULTS

Carat Weight	1.36 CARAT
Color Grade	H
Clarity Grade	VVS 2

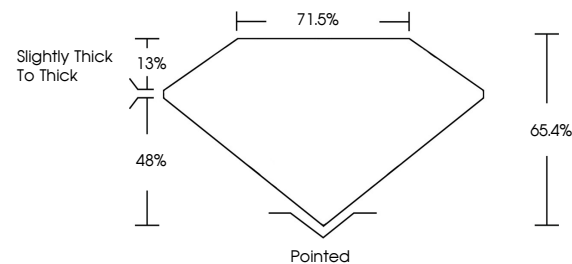
### ADDITIONAL GRADING INFORMATION

Polish	EXCELLENT
Symmetry	EXCELLENT
Fluorescence	NONE

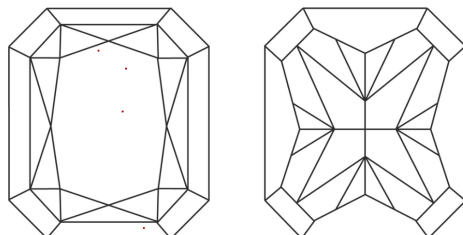
Inscription(s) **LABGROWN IGI LG544273633**  
 Comments: This Laboratory Grown Diamond was created by Chemical Vapor Deposition (CVD) growth process and may include post-growth treatment. Type IIa

LG544273633

## PROPORTIONS



## CLARITY CHARACTERISTICS

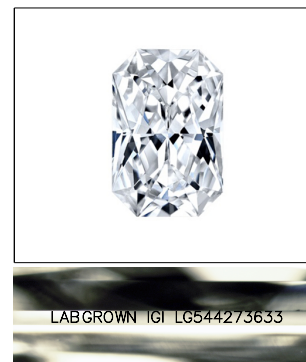


## KEY TO SYMBOLS

Red symbols indicate internal characteristics.  
Green symbols indicate external characteristics.

## GRADING SCALES

COLOR GRADING SCALE	CL		NC	FT	VLT	LT
	COLORLESS D-F		NEAR COLORLESS G-J	FAINT K-M	VERY LIGHT N-R	LIGHT S-Z
CLARITY (10x) GRADING SCALE	FL	IF	VVS	VS	SI	I
	FLAWLESS INTERNALLY FLAWLESS		VERY VERY SLIGHTLY INCLUDED	VERY SLIGHTLY INCLUDED	SLIGHTLY INCLUDED	INCLUDED

LASERSCRIBE<sup>SM</sup>

Sample Image Used



© IGI 2020, International Gemological Institute

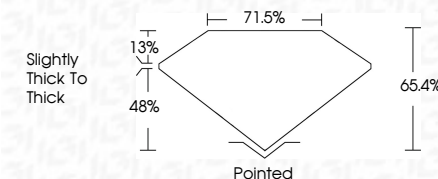
FD - 10 20

**www.igi.org**

## LABORATORY GROWN DIAMOND REPORT

September 2, 2022	
IGI Report Number	LG544273633
Description	LABORATORY GROWN DIAMOND
Shape and Cutting Style	CUT CORNERED RECTANGULAR MODIFIED BRILLIANT
Measurements	8.01 X 5.37 X 3.51 MM

Carat Weight	1.36 CARAT
Color Grade	H
Clarity Grade	VVS 2



### ADDITIONAL GRADING INFORMATION

Polish	EXCELLENT
Symmetry	EXCELLENT
Fluorescence	NONE
Inscription(s)	LABGROWN IGI LG544273633

Comments: This Laboratory Grown Diamond was created by Chemical Vapor Deposition (CVD) growth process and may include post-growth treatment.  
Type IIa



September 2, 2022	GI REPORT NO. LGS54273533	1.36 CARAT	H	VVS 2	65.4%	71.9%	Slightly Thick to Thick	Pointed	Excellent	EXCELLENT	NONE	LARGROWN LSI LGS54273533	<p>This Laboratory Grown Diamond was created by Chemical Vapor Deposition (CVD) growth process and may include trace-growth inclusions.</p> <p>Type Ia</p>
2022	GI REPORT NO. LGS54273533	1.36 CARAT	H	VVS 2	65.4%	71.9%	Slightly Thick to Thick	Pointed	Excellent	EXCELLENT	NONE	LARGROWN LSI LGS54273533	